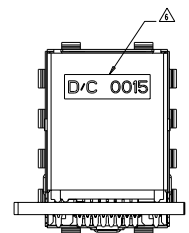
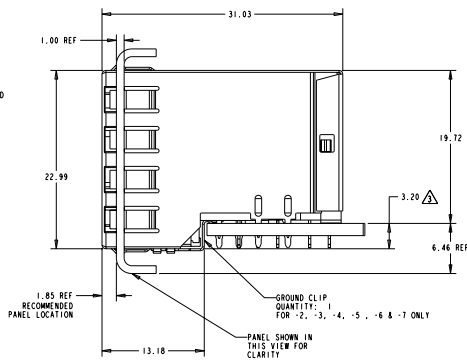
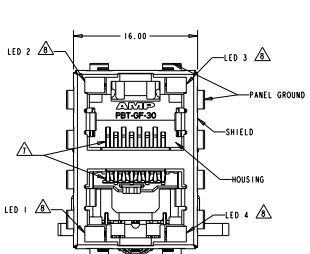
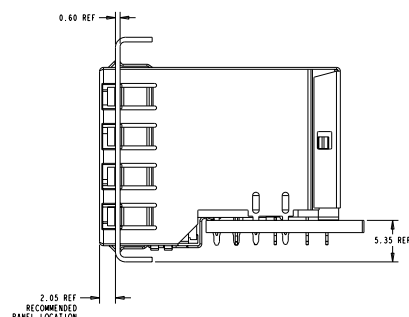


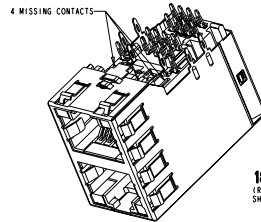
REV	DATE	DESCRIPTION	BY	CHK	APP
E3		REVISED PER ECO-11-005033	1888653	RA	HRB
F		ECO-11-017888	1888653	JJ	MOR



**ATCA PANEL AND PRINTED CIRCUIT BOARD ASSEMBLY LAYOUT**



**AMC PANEL AND PRINTED CIRCUIT BOARD ASSEMBLY LAYOUT**



**1888653-5, -6**  
(REPRESENTATION OF -5, -6 SHOWN IN THIS VIEW ONLY)

- MATERIAL:**  
HOUSING: PBT POLYESTER, BLACK, UL 94V-0.  
TERMINALS: 0.33 THICK PHOSPHOR BRONZE PLATED WITH 1.27um MINIMUM THICK HARD GOLD IN LOCALIZED AREA AND 3.0um MINIMUM THICK MATTE TIN IN ACTION PIN COMPLIANT PIN TERMINAL AREA OVER 1.27um MINIMUM THICK NICKEL UNDERPLATE.  
SHIELD: 0.25 THICK COPPER ALLOY PLATED WITH 2.03um MINIMUM TIN OVER 1.27um MINIMUM NICKEL.  
GROUNDING CLIP: 0.25 THICK COPPER ALLOY PRE-PLATED WITH 2.03um MINIMUM MATTE TIN OVER 1.27um MINIMUM NICKEL.  
LIGHT EMITTING DIODE (LED): DIFFUSED EPOXY LENS; 12-95 CARBON STEEL WIREFRAME LEADS PREPLATED WITH 8.95um THK. TIN/COPPER OVER 2.03um THK; SILVER OVER 1.02um COPPER OVER 3.56um THK. NICKEL OVER 1.02um THK. COPPER UNDERPLATE.  
LED ACTION PIN: COMPLIANT PIN CONTACTS 0.3 THICK BRASS PLATED WITH 2-4um BRIGHT TIN.
  - JACK CAVITY CONFORMS TO FCC RULES AND REGULATIONS, PART 68 SUBPART F.
- △ MAXIMUM PIN LENGTH 3.40 FROM TOP SURFACE OF PC BOARD.
  - △ FINISHED PLATED THRU HOLE DIAMETER ANULAR RING DIAMETER 1.3 TO 1.5
  - △ DATUMS AND BASIC DIMENSIONS ESTABLISHED BY CUSTOMER
  - △ DATE CODE LOCATED ON REAR OF PART APPROXIMATELY AS SHOWN
  - △ CONTACTS ARE NOT INTENDED TO BE ALIGNED WITH EACH OTHER
  - △ SUGGESTED OPERATING CURRENT FOR LEDS IS 20 mA
  - △ PCB THROUGH HOLES FOR LED #1 AND LED #4 ARE NOT REQUIRED FOR 1888653-5,6

15.88	NONE	GREEN	YELLOW	NONE	WITH GROUND CLIP	1888653-9
15.88	YELLOW	GREEN	GREEN	GREEN	WITH GROUND CLIP	1888653-7
15.88	NONE	GREEN	GREEN	NONE	WITH GROUND CLIP	1888653-6
15.88	NONE	YELLOW	GREEN	NONE	WITH GROUND CLIP	1888653-5
15.88	YELLOW	YELLOW	GREEN	GREEN	WITH GROUND CLIP	1888653-4
15.88	GREEN	GREEN	YELLOW	YELLOW	WITH GROUND CLIP	1888653-3 (SHOWN)
15.88	GREEN	GREEN	GREEN	GREEN	WITH GROUND CLIP	1888653-2
16.13	GREEN	GREEN	GREEN	GREEN	WITHOUT GROUND CLIP	1888653-1
M DIM	LED #4 (LOWER-RIGHT)	LED #3 (UPPER-RIGHT)	LED #2 (UPPER-LEFT)	LED #1 (LOWER-LEFT)	DESCRIPTION	PART NUMBER

THIS DRAWING IS A CONTROLLED DOCUMENT. DATE: 11/14/2006 BY: A. WALKER, POC72006

REVISIONS: 1. REVISION: 11/14/2006 BY: A. WALKER, POC72006

DESCRIPTION: STACKED MOD JACK ASSEMBLY, 2 X 1, 8 POSN, RJ45, SHIELDED, PANEL GROUND, OFFSET, CAT 5

DATE CODE (DRAWING NO): 114-2160

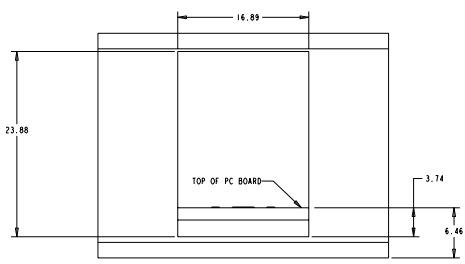
REV: 1

00779 ©-1888653

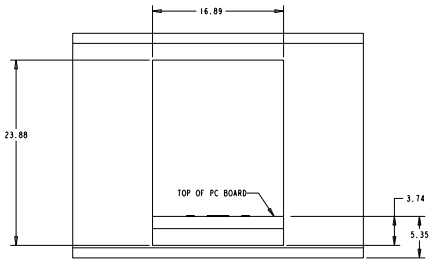
CUSTOMER DRAWING

TE Connectivity

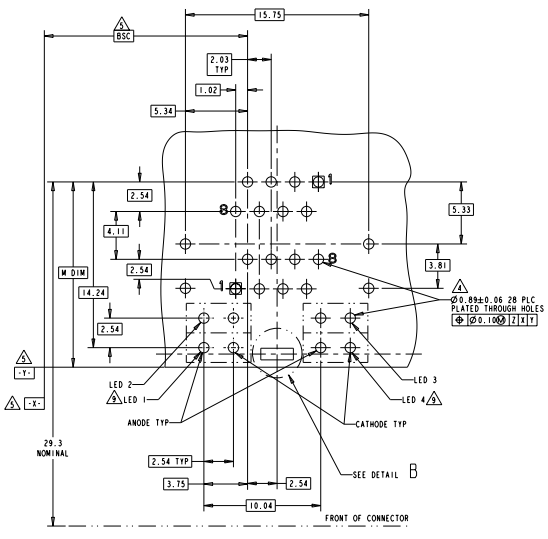
REV	DATE	DESCRIPTION	BY	CHK
00		SEE SHEET 1		



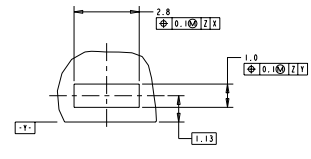
ATCA PANEL AND PRINTED CIRCUIT BOARD LAYOUT



AMC PANEL AND PRINTED CIRCUIT BOARD LAYOUT



PC BOARD LAYOUT (COMPONENT SIDE)



DETAIL B  
 SCALE 12:1  
 PLATED PADS REQUIRED FOR 1888653 - 2, 3, 4, 5, 6, 11-13 (PRODUCT WITH GROUNDING CLIPS)

THIS DRAWING IS A CONTROLLED DOCUMENT.		DATE: 11/11/2014	REV: 00	PROJECT: 1888653	DESCRIPTION: STACKED MOD JACK ASSEMBLY, 2 X 1, 8 POSN, RJ45, SHIELDED, PANEL GROUND, OFFSET, CAT 5
DESIGNED BY: J. W. WELLS	DESIGNED BY: J. W. WELLS	DATE: 11/11/2014	REV: 00	PROJECT: 1888653	DESCRIPTION: STACKED MOD JACK ASSEMBLY, 2 X 1, 8 POSN, RJ45, SHIELDED, PANEL GROUND, OFFSET, CAT 5
DATE: 11/11/2014	REV: 00	PROJECT: 1888653	DESCRIPTION: STACKED MOD JACK ASSEMBLY, 2 X 1, 8 POSN, RJ45, SHIELDED, PANEL GROUND, OFFSET, CAT 5	DATE: 11/11/2014	REV: 00
DATE: 11/11/2014	REV: 00	PROJECT: 1888653	DESCRIPTION: STACKED MOD JACK ASSEMBLY, 2 X 1, 8 POSN, RJ45, SHIELDED, PANEL GROUND, OFFSET, CAT 5	DATE: 11/11/2014	REV: 00