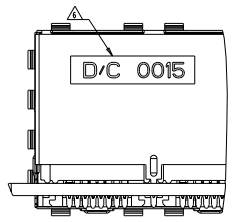
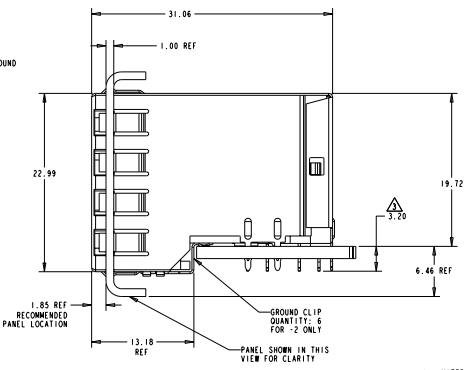
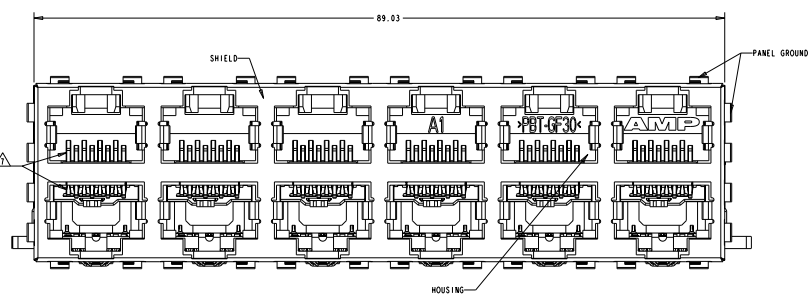
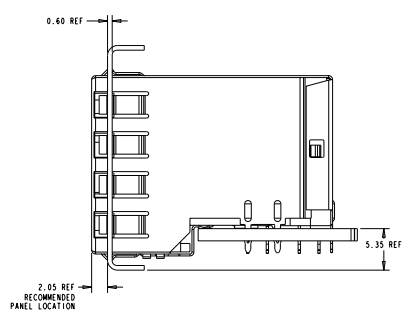


REV	DATE	DESCRIPTION	BY	CHKD	APP'D
A	RELEASED	2/20/2018	LAN	JW	
B	ECO-07-001858	2/20/2018	LAN	JW	
C	ECO-08-020353	2/20/2018	AL	ST	



ATCA PANEL AND PRINTED CIRCUIT BOARD ASSEMBLY LAYOUT



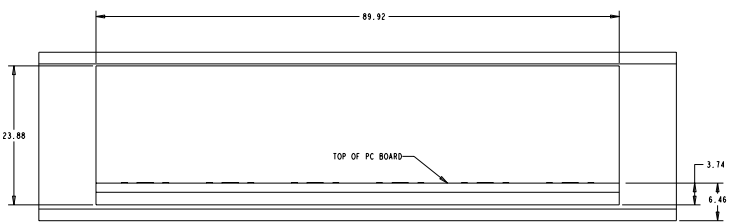
AMC PANEL AND PRINTED CIRCUIT BOARD ASSEMBLY LAYOUT

- MATERIAL:
 HOUSING: PET POLYESTER, BLACK, UL 94V-0
 TERMINALS: 0.33 THICK PHOSPHOR BRONZE PLATED WITH 1.27µm MINIMUM THICK HARD GOLD IN LOCALIZED AREA AND 2.0µm MINIMUM THICK MATTE TIN IN COMPLIANT PIN TERMINAL AREA OVER 1.27µm MINIMUM THICK NICKEL UNDERPLATE
 SHIELD: 0.25 THICK COPPER ALLOY PLATED WITH 2.03µm MINIMUM TIN OVER 1.27µm MINIMUM NICKEL
 GROUND CLIP: 0.25 THICK COPPER ALLOY PRE-PLATED WITH 2.03µm MINIMUM MATTE TIN OVER 1.27µm MINIMUM NICKEL
 - JACK CAVITY CONFORMS TO FCC RULES AND REGULATIONS, PART 68 SUBPART F.
- ⚠ MAXIMUM PIN LENGTH 3.40 FROM TOP SURFACE OF PC BOARD
 - ⚠ FINISHED PLATED THROUGH HOLE DIAMETER - ANNULAR RING DIAMETER 1.3 TO 1.5
 - ⚠ DATUMS AND BASIC DIMENSIONS ESTABLISHED BY CUSTOMER
 - ⚠ DATE CODE LOCATED ON REAR OF PART APPROXIMATELY AS SHOWN
 - ⚠ CONTACTS ARE NOT INTENDED TO BE ALIGNED WITH EACH OTHER

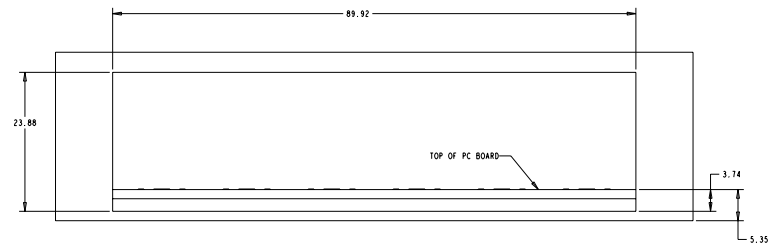
M. DIM	DESCRIPTION	PART NUMBER
15.88	WITH GROUND CLIP	1888508-2
16.13	WITHOUT GROUND CLIP	1888508-1

TTI ELECTRONICS CORPORATION 10000 WILLOW CREEK DRIVE HARRISBURG, PA 17105-3600 TEL: 717-631-1000 FAX: 717-631-1001 WWW.TTI.COM	DATE: 2/20/2018 TIME: 11:42:18 USER: jw PLOT: 188-1854 PLOT: 114-2169 PLOT: 00779	TTI ELECTRONICS CORPORATION Harrisburg, PA 17105-3600 STACKED MODULAR JACK ASSEMBLY, 2 X 6, 8 POSN., RJ45, SHIELDED, PANEL GROUND, OFFSET, CAT 5 DATE CODE (OPTIONAL) NO 1888508 00779 ©-1888508 CUSTOMER DRAWING	TTI ELECTRONICS CORPORATION Harrisburg, PA 17105-3600 DATE: 2/20/2018 TIME: 11:42:18 USER: jw PLOT: 188-1854 PLOT: 114-2169 PLOT: 00779
---	--	---	--

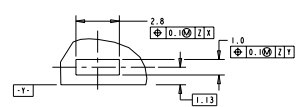
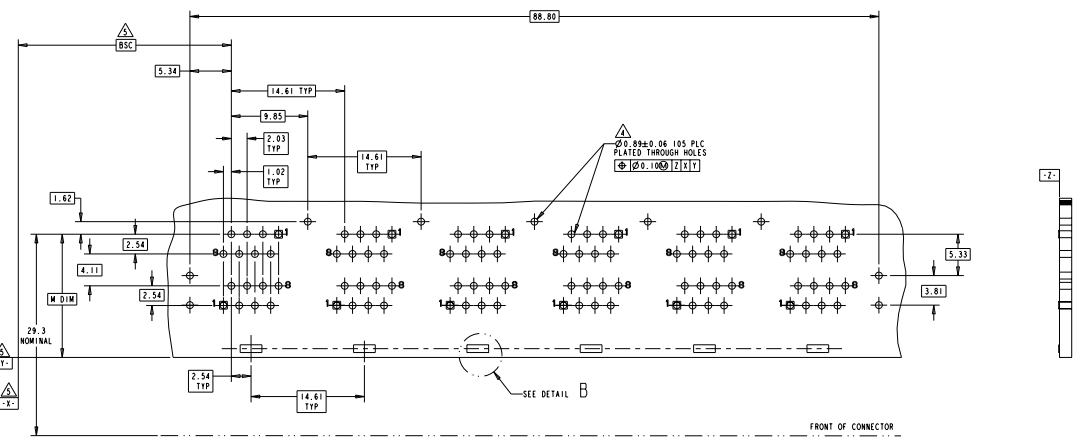
REV	DATE	DESCRIPTION	BY	CHK	APP
AA	00	SEE SHEET 1			



**ATCA PANEL AND
PRINTED CIRCUIT BOARD LAYOUT**
SCALE: 3:1



**AMC PANEL AND
PRINTED CIRCUIT BOARD LAYOUT**
SCALE: 3:1



DETAIL B
SCALE: 8:1
PLATED PADS REQUIRED FOR
1888508-2 (PRODUCT WITH
GROUNDING CLIPS)
& PLC

TITLE: STACKED MODULAR JACK ASSEMBLY, 2 X 6, 8 POSN., RJ45, SHIELDED, PANEL GROUND, OFFSET, CAT 5 PART NO: 188-1854 REV: 1 DATE: 11-4-2100 DRAWN BY: [blank] CHECKED BY: [blank] APPROVED BY: [blank]	QTY: 1000 UNIT: [blank] MFG: [blank] MFG DATE: [blank] MFG LOT: [blank]	ORDER NO: 100779 ORDER DATE: [blank] ORDER TIME: [blank]	DATE: 11-4-2100 TIME: 10:00 BY: [blank]	DATE: 11-4-2100 TIME: 10:00 BY: [blank]	DATE: 11-4-2100 TIME: 10:00 BY: [blank]
---	---	--	---	---	---