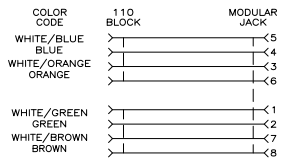
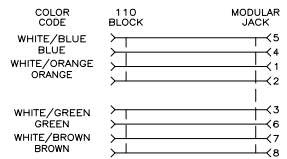


THIS DRAWING IS UNPUBLISHED  
 ALL RIGHTS RESERVED

REV	DATE	DESCRIPTION	BY	CHK	APP
G1		REVISED PER ECO-11-005033	21MMR11	RK	HMR
G2		ADD 1/3 REV ECO-11-01951	10JAN2011	LH	SA

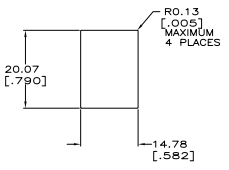
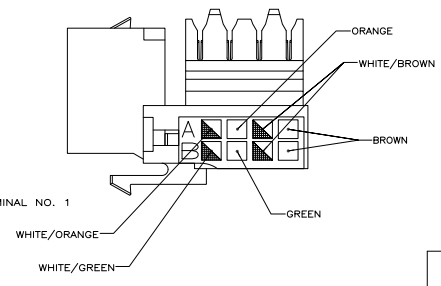
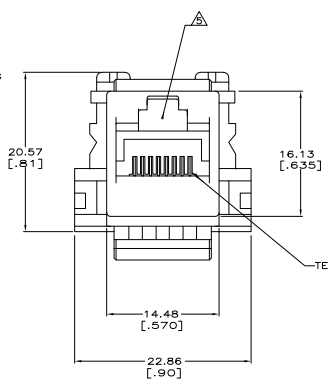
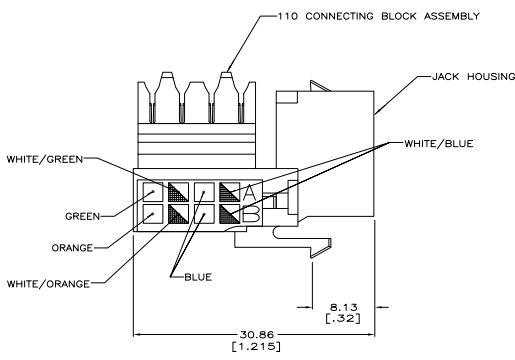


ELECTRICAL SCHEMATIC  
T568A

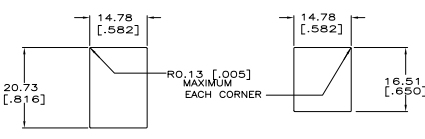


ELECTRICAL SCHEMATIC  
T568B

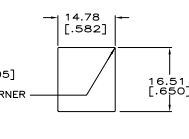
- ⚠ MATERIAL: HOUSING - POLYCARBONATE, 94V-0 RATED. SEE TABLE FOR COLOR.
- 110 BLOCKS - POLYCARBONATE, 94V-0 RATED. JACK CONTACTS - PHOSPHOROUS BRONZE, PLATED WITH 1.27µm [.000050] MINIMUM THICK GOLD IN LOCALIZED AREA AND 3.81µm [.000150] MINIMUM THICK MATTE TIN IN SOLDER AREA OVER 1.27µm [.000050] MINIMUM THICK NICKEL UNDERPLATE.
- 2. 110 BLOCK WILL TERMINATE 22-26 AWG SOLID OR 7 STRAND CONDUCTORS, 1.27 [.050] MAXIMUM INSULATION DIAMETER.
- 3. MOUNTING PANEL THICKNESS 1.473 - 1.600 [.058 - .063].
- ⚠ ONE MODULAR JACK ASSEMBLY PER POLYBAG.
- ⚠ CAVITY CONFORMS TO FCC RULES AND REGULATIONS PART 68 SUBPART F REQUIREMENTS.
- ⚠ THESE TWO SUGGESTED CUTOUT OPENINGS ARE USED IN TANDEM WITH DUAL FRONT AND BACK CUTOUTS.
- ⚠ TWENTY FIVE MODULAR JACK ASSEMBLIES PER POLYBAG.



SUGGESTED SINGLE  
PANEL CUTOUT  
SCALE 2:1



SUGGESTED BACK  
PANEL CUTOUT  
SCALE 2:1



SUGGESTED FRONT  
PANEL CUTOUT  
SCALE 2:1

HOUSING COLOR	PART NUMBER
ALPINE WHITE	3-406372-3
ELECTRIC IVORY	3-406372-1
VIOLET	3-406372-0
GREEN	2-406372-9
YELLOW	2-406372-8
RED	2-406372-7
BLUE	2-406372-6
ORANGE	2-406372-5
NEMA GRAY	2-406372-4
WHITE	2-406372-3
BLACK	2-406372-2
LIGHT ALMOND	2-406372-1
ALPINE WHITE	1-406372-3
ELECTRIC IVORY	1-406372-1
VIOLET	1-406372-0
GREEN	406372-9
YELLOW	406372-8
RED	406372-7
BLUE	406372-6
ORANGE	406372-5
NEMA GRAY	406372-4
WHITE	406372-3
BLACK	406372-2
LIGHT ALMOND	406372-1

TE Connectivity

110 MODULAR JACK ASSEMBLY, R445, ENHANCED CAT5, UNIVERSAL

108-1389

408-3389

DATE 00779 G=406372

CUSTOMER DRAWING

SCALE 2:1

REV 1

SA