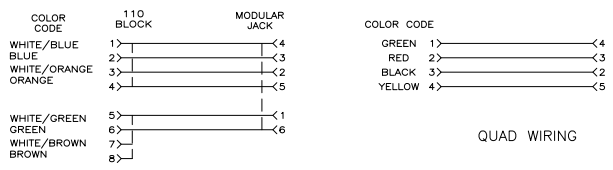
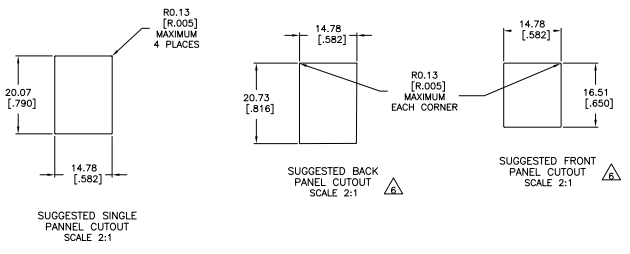
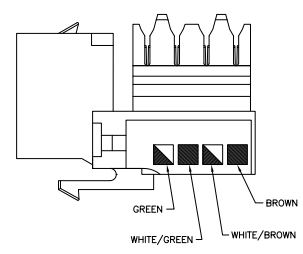
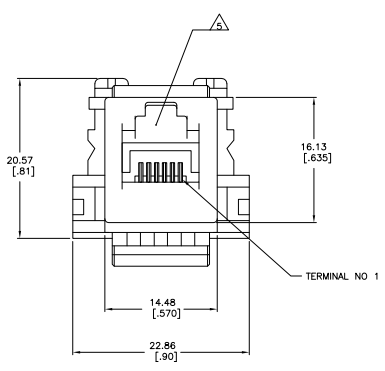
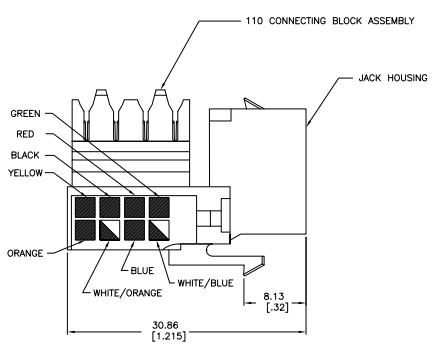


REV	DATE	DESCRIPTION	BY	CHK	APP
E1		REVISED PER ECD-11-005033	21MMR11	RK	HMR
E2		ADD 1/3, REV ECD-11-011931	20JAN2011	LH	SA



ELECTRICAL SCHEMATIC (USOC)

- ⚠ MATERIAL: HOUSING - POLYCARBONATE, 94V-0 RATED. SEE TABLE FOR COLOR.
 110 BLOCKS - POLYCARBONATE, 94V-0 RATED.
 JACK CONTACTS - PHOSPHOROUS BRONZE, PLATED WITH 1.27µm [0.00050] MINIMUM THICK GOLD IN LOCALIZED AREA AND 3.81µm [0.00150] MINIMUM THICK MATTE TIN IN SOLDER AREA OVER 1.27µm [0.00050] MINIMUM THICK NICKEL UNDERPLATE.
- 2. 110 BLOCK WILL TERMINATE 22-26 AWG SOLID CONDUCTORS OR 20-26 AWG 7 STRAND CONDUCTORS, 1.27 [0.050] MAXIMUM INSULATION DIAMETER.
- 3. MOUNTING PANEL THICKNESS 1.473-1.600 [0.058-.063].
- ⚠ PACKAGED 25 MODULAR JACK ASSEMBLIES PER CARTON.
- ⚠ CAVITY CONFORMS TO FCC RULES AND REGULATIONS PART 68 SUBPART F REQUIREMENTS.
- ⚠ THESE TWO SUGGESTED CUTOUT OPENINGS ARE USED IN TANDEM WITH DUAL FRONT AND BACK CUTOUTS.



HOUSING COLOR	PART NUMBER
ALPINE WHITE	1-406375-3
ELECTRIC IVORY	1-406375-1
VIOLET	1-406375-0
GREEN	406375-9
YELLOW	406375-8
RED	406375-7
BLUE	406375-6
ORANGE	406375-5
NEMA GRAY	406375-4
WHITE	406375-3
BLACK	406375-2
LIGHT ALMOND	406375-1

THIS DRAWING IS A CONTROLLED DOCUMENT. UNLESS OTHERWISE SPECIFIED, DIMENSIONS ARE IN INCHES.

DATE: 10B-1389
 40B-3389

TE Connectivity
 110 MODULAR JACK ASSEMBLY, RJ11

SIZE: A1
 DATE: 00779
 DRAWING NO: 406375

CUSTOMER DRAWING