

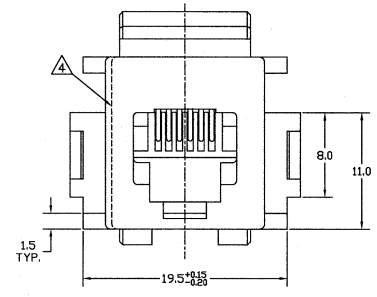
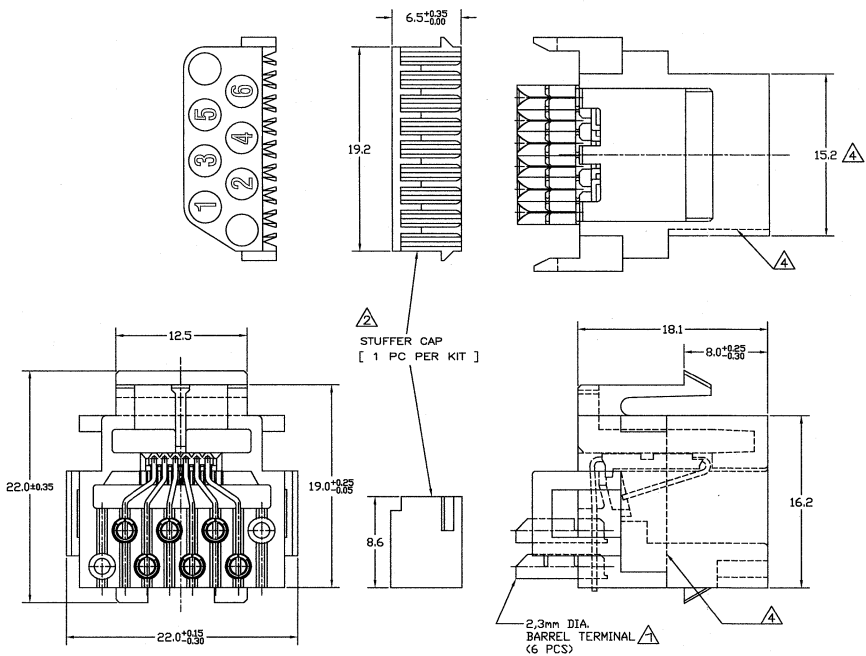
DO NOT SCALE
DIMENSIONS IN mm

METRIC



NOTES:

- △ BARREL TERMINALS WILL ACCEPT ONE OR TWO WIRES OF THE SAME SIZE PER TERMINAL.
WIRE SIZE FOR SOLID AND STRANDED WIRES:
0,12 mm² (26 AWG)-0,35 mm² (22 AWG).
MAXIMUM INSULATION DIA. 1,2 mm.
- △ STUFFER CAP IS SHIPPED NOT ASSEMBLED.
- △ MATERIALS: STUFFER CAP - A.B.S. UL 94HB
BARREL TERMINALS - PHOS.BRONZE, PRE-TINPLATED.
CONTACTS - PHOS.BRONZE, PLATED 1,25
SELECTIVE GOLD OVER 1,25
HOUSING - PBT, UL 94HB
- △ FOR 216000-2 DIMENSION 15,2 IS 14,6 ,
CORRESPONDING WITH THE MARKED DASH LINES
- △ NO STUFFER CAP INCLUDED

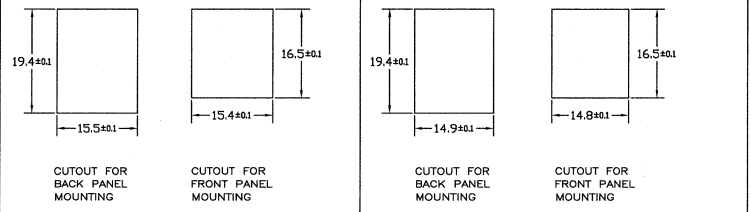


SUGGESTED PANEL CUTOUT DIMENSIONS

SCALE 2 : 1

X-216000-1

X-216000-2, -3 AND -5



PANEL THICKNESS: 1,6 mm NOMINAL

TOLERANCE: ±0,15 UNLESS SPECIFIED OTHERWISE

OBSOLETE	500 PCS. IN A BOX	SEE NOTE △	HOUSING COLOR: BLACK SEE NOTE △	△ 9-216000-3
	PACKAGING	FINISH	MATERIAL	216000-2 216000-1
CUSTOMER DRAWING			PARTNUMBER	
THIS DRAWING IS UNPUBLISHED RELEASED FOR PUBLICATION				
STE TE Connectivity				
R2	REVISED PER ECO-11-055294	RK	HMR	05APR11
LTR	REVISION RECORD	DR	CHK	DATE
DR.: JVL/EMT	CHK.: WJ/BRUNNMS	APP.: L. V. SZEIST	DWG.No.:	REV./LTR/ SHEET
DATE: 21 JAN 91	DATE:	DATE: 12 OCT 94	C-216000	R2 1 OF 1

11

10

9

8

7

6

5

4

3

2

1

A2