

4

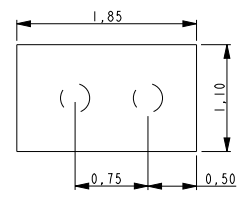
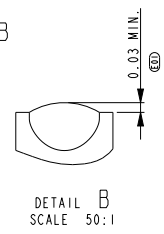
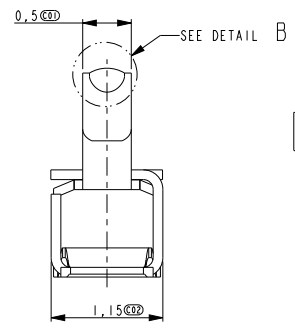
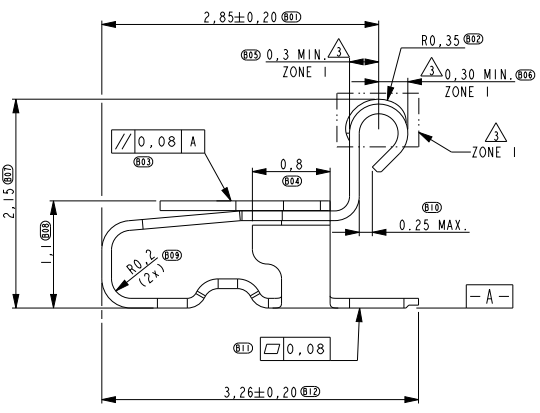
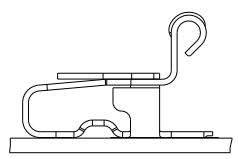
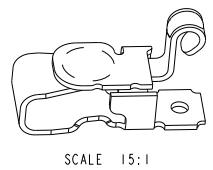
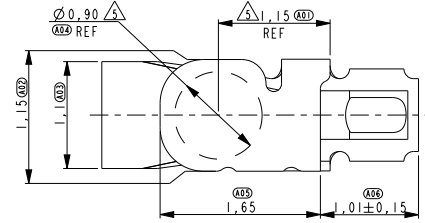
3

2

1

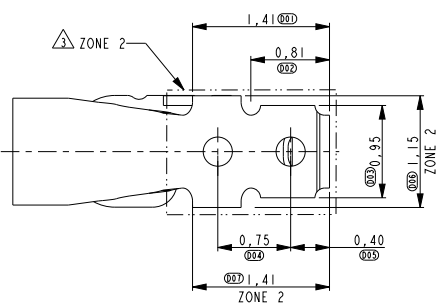
THIS DRAWING IS UNPUBLISHED. RELEASED FOR PUBLICATION. ALL RIGHTS RESERVED.

LOC		DIST		REVISIONS			
P	LTR	DESCRIPTION	DATE	DWN	APVD		
B		UPDATED	13SEP2011	T.Z	S.Y		



RECOMMENDED PWB LAY-OUT (±0.05)
DASHED CIRCLES ARE THE LOCATION OF THE SPRING FINGER BOTTOM HOLES

- 1 PART NUMBER: 1551573-5 AS SHOWN.
- 2 MATERIAL: STAINLESS STEEL.
- 3 PLATING: 1.3um MIN. NICKEL UNDERLAYER ALL OVER
ZONE 1: 0.50um MIN. GOLD
ZONE 2: 0.05-0.3um GOLD FLASH
- 4 NORMAL FORCE 0.6±0.2N AT NOMINAL HEIGHT 1.6MM.
- 5 INDICATED SURFACE TO BE USED AS PICK AND PLACE SURFACE.



THIS DRAWING IS A CONTROLLED DOCUMENT.		DWN 13 JUN 2010 Tony Zhang	TE Connectivity	
DIMENSIONS: mm		CHK 13 JUN 2010 Martin Li		
TOLERANCES UNLESS OTHERWISE SPECIFIED:		APVD 13 JUN 2010 Steven Yao	NAME SPRING FINGER H=2,15	
0 PLC ±0.2		PRODUCT SPEC	SIZE CAGE CODE DRAWING NO RESTRICTED TO	
1 PLC ±0.1		108-115008	A3 C=1551573	
2 PLC ±0.1		APPLICATION SPEC	WEIGHT	
3 PLC ±0.05			CUSTOMER DRAWING	
4 PLC ±			SCALE 25:1 SHEET 1 OF 2 REV B	
ANGLES 45°				
MATERIAL				
FINISH				

4

3

2

1

THIS DRAWING IS UNPUBLISHED.

RELEASED FOR PUBLICATION

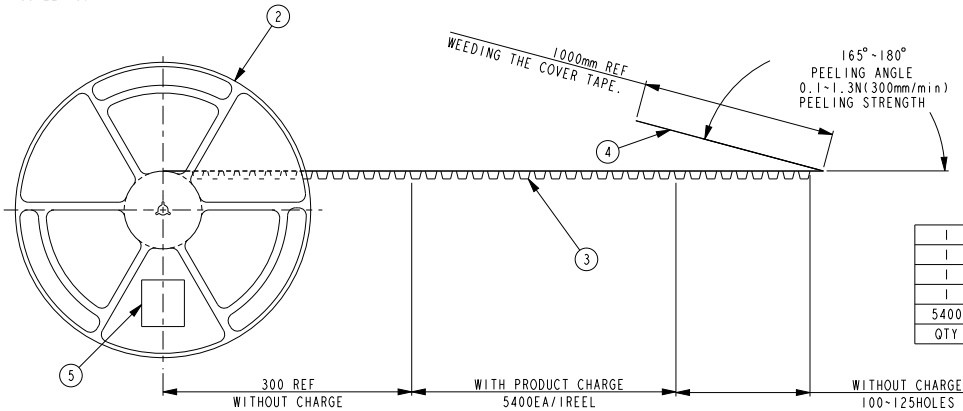
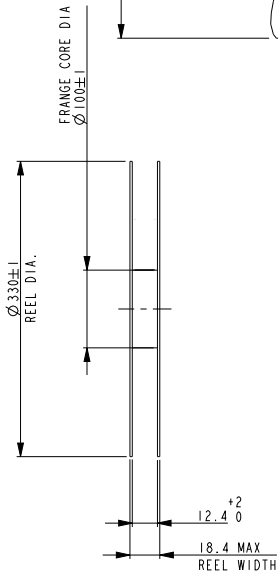
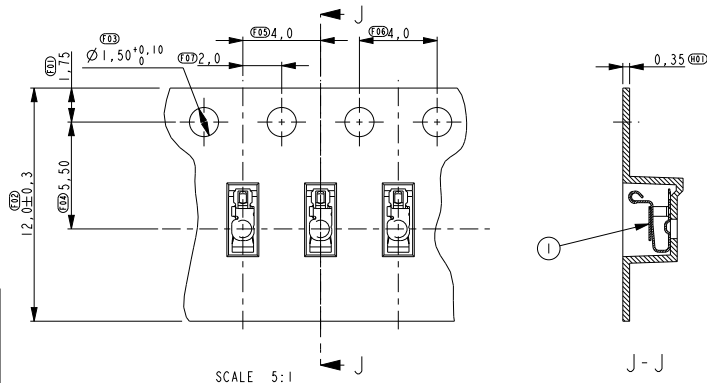
© COPYRIGHT -

ALL RIGHTS RESERVED.

LOC ES DIST 00

REVISIONS

P	LTR	DESCRIPTION	DATE	DWN	APVD
-	-	SEE SHEET 1	-	-	-



I	LABEL	5
I	COVER TAPE	4
I	EMBOSS	3
I	PLASTIC REEL	2
5400	SPRING FINGER	1
QTY	DESCRIPTION	ITEM

THIS DRAWING IS A CONTROLLED DOCUMENT.

DIMENSIONS:	TOLERANCES UNLESS OTHERWISE SPECIFIED:
mm	0 PLC ±0.2
	1 PLC ±0.1
	2 PLC ±0.1
	3 PLC ±0.05
	4 PLC ±
	ANGLES ±5°

MATERIAL	FINISH
-	-

DWN	CHK
APVD	PRODUCT SPEC
APPLICATION SPEC	WEIGHT
CUSTOMER DRAWING	



TE Connectivity

NAME		RESTRICTED TO	
SPRING FINGER		-	
H=2,15		-	
SIZE	CAGE CODE	DRAWING NO	
A3		G=1551573	
SCALE	SHEET	OF	REV
2.5:1	2	2	B