

4

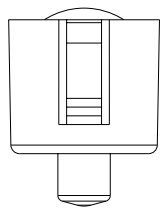
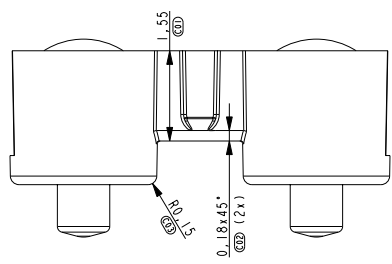
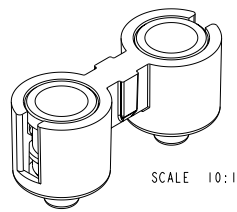
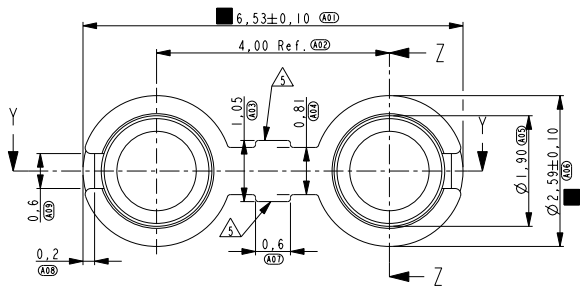
3

2

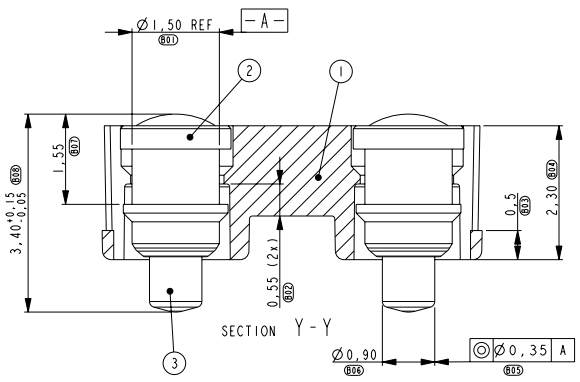
1

THIS DRAWING IS UNPUBLISHED. RELEASED FOR PUBLICATION 20
 COPYRIGHT 20 BY - ALL RIGHTS RESERVED.

LOC	DIST	REVISIONS				
P	LTR	DESCRIPTION	DATE	DWN	APVD	
A		ECR-11-018633	13SEP2011	PW	AL	
AI		ECR-11-020935	13OCT2011	JvH	AL	



SECTION Z-Z



- NOTES:
- PN AS SHOWN: 2173227-2.
 - SHARP EDGES ON PLASTIC WILL BE BROKEN.
 - PACKAGING: BULK PACKAGING. 2500PCS/BAG.
 - FOR PERFORMANCE REQUIREMENTS SEE PRODUCT SPECIFICATION 108-19426.
 - GATE POSITION. MAX 0.10mm CUT OFF BURR.
 - = Cpk DIMENSION.

Contact Force vs Deflection		
	Working Height [mm]	Force [N]
MAX.	2,50	2,0 MAX.
MIN.	3,20	0,5 MIN.

ITEM No.	Qty.	DESCRIPTION	MATERIAL	FINISH
3	1	POGO PIN PLUNGER	C36000 or equal	0,3µm MIN. Au over 1,0µm MIN. Ni
2	1	POGO PIN BODY	C36000 or equal	0,3µm MIN. Au over 1,0µm MIN. Ni
1	1	HOUSING	PC	GREY

THIS DRAWING IS A CONTROLLED DOCUMENT.

DIMENSIONS: mm	TOLERANCES UNLESS OTHERWISE SPECIFIED:	0 PLC ±	1 PLC ±0,10	2 PLC ±0,05	3 PLC ±0,05	4 PLC ±	ANGLES ±	FINISH
MATERIAL		FINISH		SIZE		CAGE CODE	DRAWING NO	RESTRICTED TO
				A3		00779	C-2173227	

DOWN: J. van Hoesk 22JUL2011
 CHK: P. Willems 22JUL2011
 APVD: A. Ligthart 22JUL2011
 PRODUCT SPEC: 108-19426
 APPLICATION SPEC: -
 WEIGHT: -
 CUSTOMER DRAWING

STE TE Connectivity
 DUAL FLOATING POGO PIN ASSEMBLY
 3,40mm HEIGHT

SCALE: 15:1 SHEET 1 OF 1 REV A1