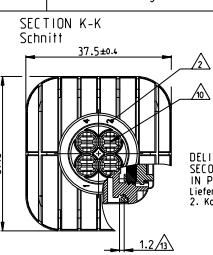
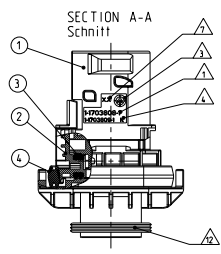
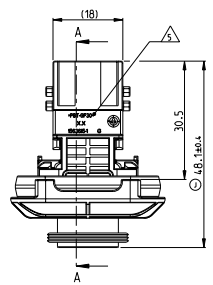


1-1703808-1 AS SHOWN  
1-1703808-1 wie gezeigt

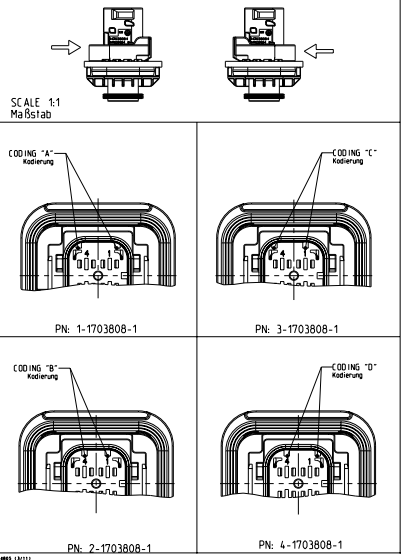


REV.	DESCRIPTION	DATE	BY	CHK
A1				
G	DETAILS SEE PCN E-08-02224		SP632009	SJ
H	DETAILS SEE PCN E-10-07600		SP632010	AK
J	DETAILS SEE PCN E-11-004548		SP632011	DB

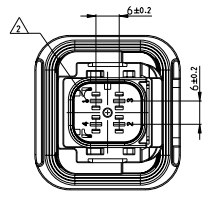
DELIVERY CONDITION:  
SECONDARY LOCKING DEVICE  
IN PRE-LOCKED POSITION  
Lieferzustand:  
2. Kontaktsicherung in Vorraststellung



SLIDE FROM BOTH DIRECTIONS MOUNTABLE  
Schieber von beiden Seiten montierbar



- NOTES  
Bemerkungen
- ⚠ TE ORDER-NO.  
TE Bestell.-Nr.
  - ⚠ CAVITY NUMBERING  
Kammerbezeichnung
  - ⚠ PRODUCTION DATE  
Produktionsdatum
  - ⚠ LETTER-INSERT FOR THE REVISION STATUS OF THE MOULD  
Schriftsatz fuer Aenderungszustand des Werkzeugs
  - ⚠ MATERIAL MARKING ACCORDING TO VDA 260  
Materialkennzeichnung nach VDA 260
  - 6 BULK PACKAGING IN CORRUGATED BOX  
Schubstueck im Wellkarton
  - ⚠ MOULD CAVITY MARKING  
Kammermarkierung
  - ⚠ TE LOGO  
TE Logo
  - 9 SUITABLE COUNTERPART SEE DRAWING 14-18390  
passendes Gegenstueck siehe Zeichnung 14-18390
  - ⚠ CAVITIES MATED WITH TAB 2.8 x 0.8 MM (GWS)  
SEE PRODUCT GROUP DRAWING  
TE NO. 195952  
Kontaktkammer passend fuer Flachstecker 2.8 x 0.8 mm (GWS)  
siehe Produktgruppenzeichnung  
TE Nr. 195952  
max. Steifigkeitsbereich 2.5mm² FUR (AWG 12 TXL)
  - ⚠ INTERFACE ACC. DRAWING 14-18739-1  
Kragenschnitt nach Zeichnung 14-18739-1
  - ⚠ MATED WITH COVER SEE  
PRODUCT GROUP DRAWING 563709  
Passend zu Kappe siehe  
Produktgruppenzeichnung 563709
  - ⚠ SLIDING DISTANCE OF SECONDARY LOCKING  
Verschiebeweg der zweiten Kontaktsicherung
  - ⚠ 14 MALFUNCTION CAUSED BY LAQUER IS NOT  
COVERED BY TE WARRANTY  
Funktionsbeeintraechtigung durch Lackieren, liegt nicht  
im Einfluss und Gewährleistungsbereich von TE



ITEM NO.	DESCRIPTION	QTY	UNIT
1	TE CONNECTIVITY	1	PCB
2	TE CONNECTIVITY	1	PCB
3	TE CONNECTIVITY	1	PCB
4	TE CONNECTIVITY	1	PCB
5	TE CONNECTIVITY	1	PCB
6	TE CONNECTIVITY	1	PCB
7	TE CONNECTIVITY	1	PCB
8	TE CONNECTIVITY	1	PCB
9	TE CONNECTIVITY	1	PCB
10	TE CONNECTIVITY	1	PCB
11	TE CONNECTIVITY	1	PCB
12	TE CONNECTIVITY	1	PCB
13	TE CONNECTIVITY	1	PCB
14	TE CONNECTIVITY	1	PCB
15	TE CONNECTIVITY	1	PCB
16	TE CONNECTIVITY	1	PCB
17	TE CONNECTIVITY	1	PCB
18	TE CONNECTIVITY	1	PCB
19	TE CONNECTIVITY	1	PCB
20	TE CONNECTIVITY	1	PCB
21	TE CONNECTIVITY	1	PCB
22	TE CONNECTIVITY	1	PCB
23	TE CONNECTIVITY	1	PCB
24	TE CONNECTIVITY	1	PCB
25	TE CONNECTIVITY	1	PCB
26	TE CONNECTIVITY	1	PCB
27	TE CONNECTIVITY	1	PCB
28	TE CONNECTIVITY	1	PCB
29	TE CONNECTIVITY	1	PCB
30	TE CONNECTIVITY	1	PCB
31	TE CONNECTIVITY	1	PCB
32	TE CONNECTIVITY	1	PCB
33	TE CONNECTIVITY	1	PCB
34	TE CONNECTIVITY	1	PCB
35	TE CONNECTIVITY	1	PCB
36	TE CONNECTIVITY	1	PCB
37	TE CONNECTIVITY	1	PCB
38	TE CONNECTIVITY	1	PCB
39	TE CONNECTIVITY	1	PCB
40	TE CONNECTIVITY	1	PCB
41	TE CONNECTIVITY	1	PCB
42	TE CONNECTIVITY	1	PCB
43	TE CONNECTIVITY	1	PCB
44	TE CONNECTIVITY	1	PCB
45	TE CONNECTIVITY	1	PCB
46	TE CONNECTIVITY	1	PCB
47	TE CONNECTIVITY	1	PCB
48	TE CONNECTIVITY	1	PCB
49	TE CONNECTIVITY	1	PCB
50	TE CONNECTIVITY	1	PCB

TE ORDER-NO. TE Bestell.-Nr.	REV.	NO. OF POS. Platznr.	CODE Kodierung	QUANTITY Stueck	ITEM ASSY
4-1703808-1	J	4	D	-	1
3-1703808-1	J	4	C	-	1
2-1703808-1	J	4	B	-	1
1-1703808-1	J	4	A	-	1

THIS DRAWING IS A CONTROLLED DOCUMENT.  
TE CONNECTIVITY  
231AN2008  
4POS. TAB 2.8x0.8, TAB HSG. ASSY  
4POS. TAB 2.8x0.8, Flachsteckergehäuse  
HSGS - GROUP B  
19.85g  
00779  
1703808