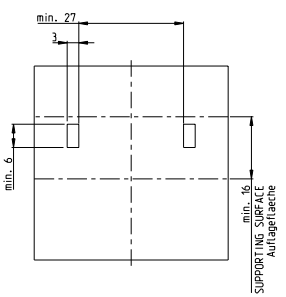
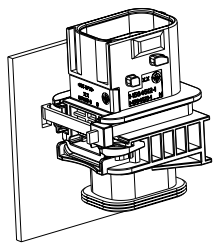
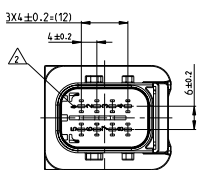
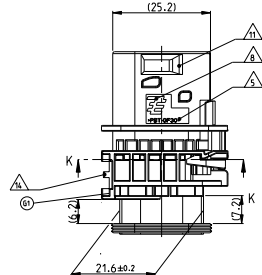
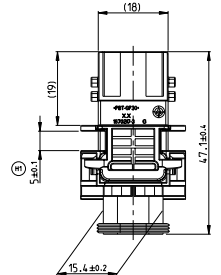
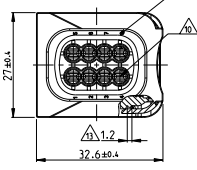


8	7	6	5	4	3	2	1
---	---	---	---	---	---	---	---

PREFERRED MOUNTING SITUATION FOR CABLE TIE  
Bevorzugte Montagestellung fuer Kabelbinder



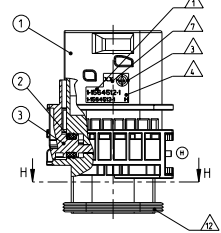
SECTION K-K  
Schnitt



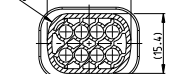
1-1564512-1 AS SHOWN  
1-1564512-1 wie gezeigt

DELIVERY CONDITION:  
SECONDARY LOCKING DEVICE  
IN PRE-LOCKED POSITION  
Lieferzustand:  
2. Kontaktsicherung in Vorraststellung

SECTION A-A  
Schnitt



SECTION H-H  
Schnitt



REV. NO.	DATE	BY	CHK	DESCRIPTION
1	20060209	SB	JG	G NEW DRAWING CREATED
2	20060209	SJ	JG	H1 DETAILS SEE PCN E-09-07561
3	20060209	SB	JG	H2 DETAILS SEE PCN E-11-002703
4	20060209	SB	JG	H3 DETAILS SEE PCN E-11-009362

NOTES  
Bemerkungen

- ⚠ TE ORDER-NO.  
TE Bestell-Nr.
- ⚠ CAVITY NUMBERING  
Hohlraumbezeichnung
- ⚠ PRODUCTION DATE  
Produktionsdatum
- ⚠ LETTER-INSERT FOR THE REVISION STATUS OF THE MOULD  
Schriftsatz fuer Aenderungszustand des Werkzeugs
- ⚠ MATERIAL MARKING ACCORDING TO VDA 260  
Werkstoffmarkierung nach VDA 260
- ⚠ BULK PACKAGING IN CORRUGATED BOX  
Schuetztiegel in Wellkarton
- ⚠ MOULD CAVITY MARKING  
Hohlraummarkierung
- ⚠ TE LOGO  
TE Logo
- ⚠ SUITABLE COUNTERPART SEE DRAWING: 1418479  
passendes Gegenstueck siehe Zeichnung: 1418479
- ⚠ CAVITIES MATED WITH TAB 1.6 x 0.6 MM (SW5)  
SEE PRODUCT GROUP DRAWING  
TE NO. 135505  
MAX. WIRE SIZE: 1.0mm² FLR  
Kontaktpaarelement passend fuer Flachstecker 1.6 x 0.6 mm (SW5)  
siehe Produktgruppenzeichnung  
Max. Drahtquerschnitt: 1.0mm² FLR
- ⚠ INTERFACE ACC. TE-DRAWING: 114-18740-1  
Kragenanschluss nach TE-Zeichnung: 114-18740-1
- ⚠ MATED WITH COVER SEE TE P/N:1670057, 1670364  
Passend zu Klappe siehe TE P/N:1670057, 1670364
- ⚠ SLIDING DISTANCE OF SECONDARY LOCKING  
Hohlraumabstand fuer zweifach Kontaktsicherung
- ⚠ INTERFACE FOR FIXING PART  
RAYMOND ODER-NR.: 07530, 07612  
Schriftsatz fuer Befestigungsteil  
Raymond Bestell-Nr.: 07530, 07612
- ⚠ IS MALFUNCTION CAUSED BY LAQUER IS NOT  
COVERED BY TE WARRANTY  
Funktionsbeeintraechtigung durch Lackieren, liegt nicht  
im Leistung- und Gewährleistungsumfang von TE

<p>CODING "A" Kodierung</p> <p>PN: 1-1564512-1</p>	<p>CODING "B" Kodierung</p> <p>PN: 2-1564512-1</p>	<p>CODING "C" Kodierung</p> <p>PN: 3-1564512-1</p>	<p>CODING "D" Kodierung</p> <p>PN: 4-1564512-1</p>
--	--	--	--

REV.	REV. NO.	REV. DATE	REV. BY	REV. CHK	DESCRIPTION	ITEM NO.	ITEM ASSY
1	1	20060209	SB	JG	NEW DRAWING CREATED	1	1
2	2	20060209	SJ	JG	H1 DETAILS SEE PCN E-09-07561	2	2
3	3	20060209	SB	JG	H2 DETAILS SEE PCN E-11-002703	3	3
4	4	20060209	SB	JG	H3 DETAILS SEE PCN E-11-009362	4	4

