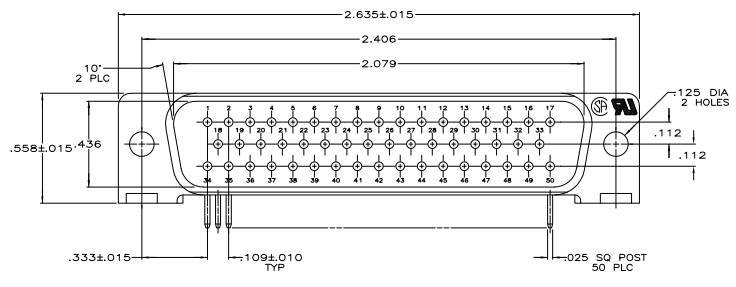
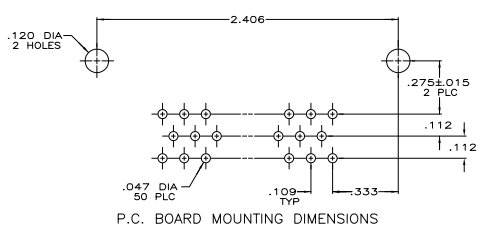
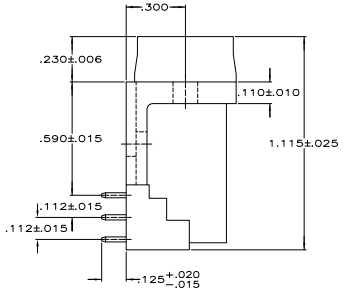
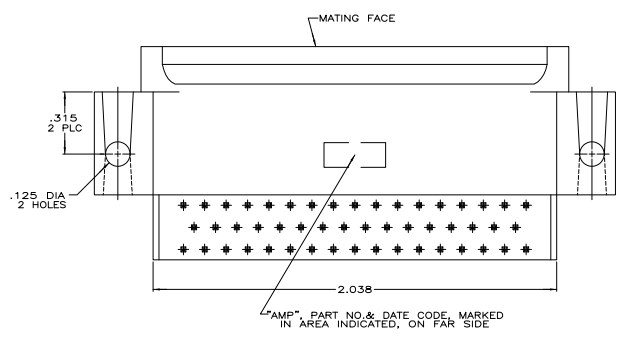


THIS DRAWING IS UNPUBLISHED. RELEASE FOR PRODUCTION. IN THE ELECTRONIC COMPONENTS ALL RIGHTS RESERVED.

REV	DATE	DESCRIPTION	BY	CHK
00				
C		REVISED FOR ECO-06-0833A		



- CONNECTOR MATES WITH ANY 50 POS. RECEPTACLE IN AMPLITE SERIES & COMPLIES WITH AMP SPEC. 108-40,005 WHERE APPLICABLE.
- MOLDED PARTS: FLAME RETARDANT 94V-0 RATED THERMOPLASTIC, BLACK; CONTACT: BRASS.
- GOLD PLATED FOR LENGTH OF .150 MIN FROM MATING END, .000030 MIN GOLD IN MATED AREA; GOLD FLASH ON REMAINDER, ALL OVER .000050 NICKEL ON ENTIRE CONTACT.
- GOLD PLATED FOR A LENGTH OF .150 FROM MATING END, .000030 MIN GOLD IN MATED AREA, .000100-.000200 BRIGHT TIN OR BRIGHT TIN-LEAD ON SOLDER END, ALL OVER .000050 MIN NICKEL ON ENTIRE CONTACT.
- GOLD FLASH OVER PALLADIUM NICKEL PLATED FOR LENGTH OF .150 FROM MATING END, .000030 MIN PALLADIUM NICKEL IN MATED AREA, .000100-.000200 BRIGHT TIN OR BRIGHT TIN-LEAD ON SOLDER END, ALL OVER .000050 MIN NICKEL ON ENTIRE CONTACT.
- NO CONTACT LOADED IN POSITIONS 6, 9, 22, 25, 39 & 42.



REVISIONS	DATE	BY	CHK
748301-2			
748301-1			

THIS DRAWING IS A CONTROLLED DOCUMENT.	REV	DATE	DESCRIPTION
00			
C			REVISED FOR ECO-06-0833A