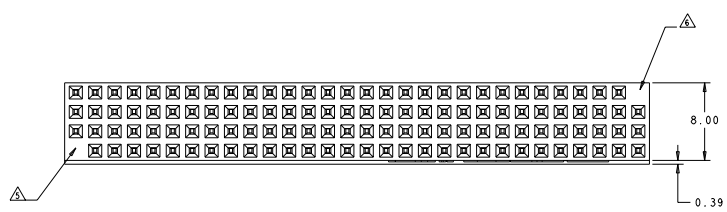
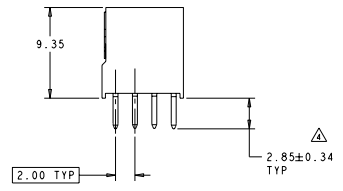
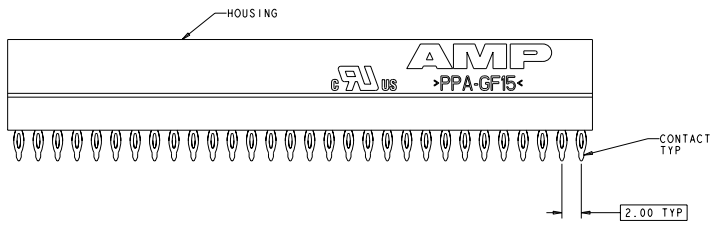


REVISED		REVISIONS			
REV	DATE	DESCRIPTION	BY	CHK	APP
02		REVISED PER ECO-11-005140			



- △ HOUSING: HIGH TEMPERATURE, GLASS FILLED NYLON.
COLOR: BLACK
CONTACTS: PHOSPHOR BRONZE.
- △ CONTACTS: 0.000381 MIN GOLD ON MATING RECEPTACLE
END: 0.00254 BRIGHT TIN-LEAD ON REMAINDER, ALL OVER 0.001270 NICKEL.
- △ PCB HOLE RECOMMENDATIONS:
A. DRILL HOLE DIAMETER TO BE 1.00±0.02.
B. PLATING TO BE 0.005 MIN TIN-LEAD OVER 0.025±0.075 COPPER.
C. RECOMMENDED FINISH HOLE SIZE IS 0.88±0.08.
- △ DIMENSION AFTER SEATING TO PCB.
- △ NO CONTACT IN THIS POSITION FOR 1375800-2 & -5 ONLY.
- △ NO CONTACT IN THIS POSITION FOR 1375800-3 & -6 ONLY.
- △ CONTACTS: 0.000381 MIN GOLD ON MATING RECEPTACLE
END: 0.00254-0.00508 MATTE TIN ON REMAINDER, ALL OVER 0.001270 NICKEL.
- △ TO BE USED ON SILVER IMMERSION PLATED PCB'S (NOTE 9).
- △ PCB HOLE RECOMMENDATIONS FOR SILVER IMMERSION PLATING:
A. DRILL HOLE DIAMETER TO BE 1.04±0.02.
B. PLATING TO BE 0.001524-0.0004064 SILVER OVER 0.0508±0.0254 COPPER.
C. RECOMMENDED FINISH HOLE SIZE IS 0.94-1.03.
- △ PCB HOLE RECOMMENDATIONS FOR ENIG PLATING:
A. DRILL HOLE DIAMETER TO BE 1.04±0.02.
B. PLATING TO BE 0.00051-0.000127 GOLD OVER 0.00305-0.00610 NICKEL ALL OVER 0.0508±0.0254 COPPER.
C. RECOMMENDED FINISH HOLE SIZE IS 0.94-1.03.
- △ TO BE USED ON STANDARD PCB (NOTE 3) OR ENIG PLATED PCB (NOTE 10).
- △ OBSOLETE PARTS: OBSOLETE CIS STREAMLINING PER D.RENAUD/D.SINISI



△	△	YES △	1375800-6
△	△	YES △	1375800-5
△	△	NO	1375800-4
△	△	YES △	1375800-3
△	△	YES △	1375800-2
△	△	NO	1375800-1
FINISH		KEYED CIRCUIT	PART NO

△ SUPERCEDED BY 1375800-5

THIS DRAWING IS A CONTROLLED DOCUMENT.

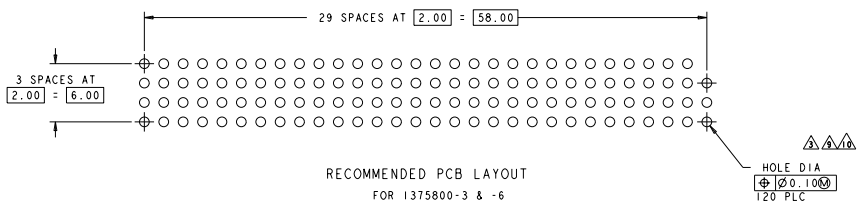
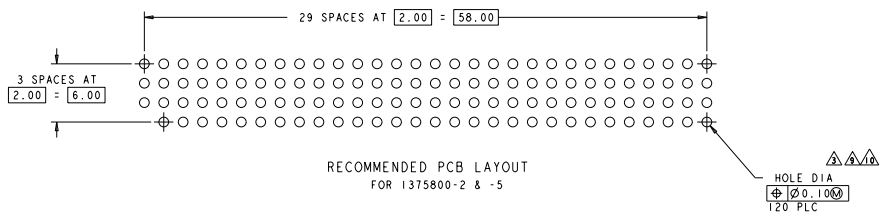
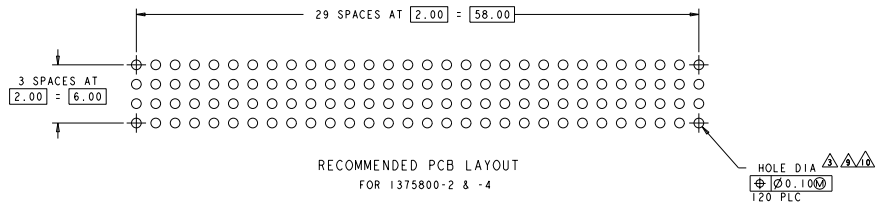
DATE: 13 JUN 2007	BY: J. L. LEMER	REV: 00
DATE: 13 JUN 2007	BY: J. OLSON	REV: 01
DATE: 13 JUN 2007	BY: J. OLSON	REV: 02
DATE: 13 JUN 2007	BY: J. OLSON	REV: 03
DATE: 13 JUN 2007	BY: J. OLSON	REV: 04
DATE: 13 JUN 2007	BY: J. OLSON	REV: 05
DATE: 13 JUN 2007	BY: J. OLSON	REV: 06
DATE: 13 JUN 2007	BY: J. OLSON	REV: 07
DATE: 13 JUN 2007	BY: J. OLSON	REV: 08
DATE: 13 JUN 2007	BY: J. OLSON	REV: 09
DATE: 13 JUN 2007	BY: J. OLSON	REV: 10

ASSEMBLY, PC/104-PLUS.
NON-STACK THROUGH CONTACTS.
PRESS FIT

STATE CASE CODE DRAWING NO: 1375800
REV: 000779

CUSTOMER DRAWING

REV	DATE	DESCRIPTION	BY	CHK
AD	00	SEE SHEET 1		



THIS DRAWING IS A CONTROLLED DOCUMENT.

DATE: 13 JUN 2007	BY: J. L. LEMIER	REV: 00
DATE: 13 JUN 2007	BY: M. BELLOCQ	REV: 01
DATE: 13 JUN 2007	BY: J. OLSON	REV: 02
DATE: 13 JUN 2007	BY: J. OLSON	REV: 03
DATE: 13 JUN 2007	BY: J. OLSON	REV: 04
DATE: 13 JUN 2007	BY: J. OLSON	REV: 05
DATE: 13 JUN 2007	BY: J. OLSON	REV: 06
DATE: 13 JUN 2007	BY: J. OLSON	REV: 07
DATE: 13 JUN 2007	BY: J. OLSON	REV: 08
DATE: 13 JUN 2007	BY: J. OLSON	REV: 09
DATE: 13 JUN 2007	BY: J. OLSON	REV: 10
DATE: 13 JUN 2007	BY: J. OLSON	REV: 11
DATE: 13 JUN 2007	BY: J. OLSON	REV: 12
DATE: 13 JUN 2007	BY: J. OLSON	REV: 13
DATE: 13 JUN 2007	BY: J. OLSON	REV: 14
DATE: 13 JUN 2007	BY: J. OLSON	REV: 15
DATE: 13 JUN 2007	BY: J. OLSON	REV: 16
DATE: 13 JUN 2007	BY: J. OLSON	REV: 17
DATE: 13 JUN 2007	BY: J. OLSON	REV: 18
DATE: 13 JUN 2007	BY: J. OLSON	REV: 19
DATE: 13 JUN 2007	BY: J. OLSON	REV: 20
DATE: 13 JUN 2007	BY: J. OLSON	REV: 21
DATE: 13 JUN 2007	BY: J. OLSON	REV: 22
DATE: 13 JUN 2007	BY: J. OLSON	REV: 23
DATE: 13 JUN 2007	BY: J. OLSON	REV: 24
DATE: 13 JUN 2007	BY: J. OLSON	REV: 25
DATE: 13 JUN 2007	BY: J. OLSON	REV: 26
DATE: 13 JUN 2007	BY: J. OLSON	REV: 27
DATE: 13 JUN 2007	BY: J. OLSON	REV: 28
DATE: 13 JUN 2007	BY: J. OLSON	REV: 29
DATE: 13 JUN 2007	BY: J. OLSON	REV: 30
DATE: 13 JUN 2007	BY: J. OLSON	REV: 31
DATE: 13 JUN 2007	BY: J. OLSON	REV: 32
DATE: 13 JUN 2007	BY: J. OLSON	REV: 33
DATE: 13 JUN 2007	BY: J. OLSON	REV: 34
DATE: 13 JUN 2007	BY: J. OLSON	REV: 35
DATE: 13 JUN 2007	BY: J. OLSON	REV: 36
DATE: 13 JUN 2007	BY: J. OLSON	REV: 37
DATE: 13 JUN 2007	BY: J. OLSON	REV: 38
DATE: 13 JUN 2007	BY: J. OLSON	REV: 39
DATE: 13 JUN 2007	BY: J. OLSON	REV: 40
DATE: 13 JUN 2007	BY: J. OLSON	REV: 41
DATE: 13 JUN 2007	BY: J. OLSON	REV: 42
DATE: 13 JUN 2007	BY: J. OLSON	REV: 43
DATE: 13 JUN 2007	BY: J. OLSON	REV: 44
DATE: 13 JUN 2007	BY: J. OLSON	REV: 45
DATE: 13 JUN 2007	BY: J. OLSON	REV: 46
DATE: 13 JUN 2007	BY: J. OLSON	REV: 47
DATE: 13 JUN 2007	BY: J. OLSON	REV: 48
DATE: 13 JUN 2007	BY: J. OLSON	REV: 49
DATE: 13 JUN 2007	BY: J. OLSON	REV: 50

STE TE Connectivity

ASSEMBLY, PC/104-PLUS.
NON-STACK THROUGH CONTACTS.
PRESS FIT

STATE CASE CODE (DRAWING NO) 100779 (C)-1375800

REVISION A

CUSTOMER DRAWING

DATE: 99.28

REV: 2

REV: 62