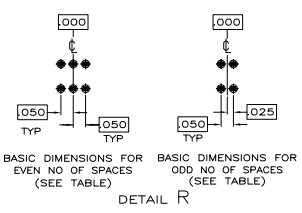
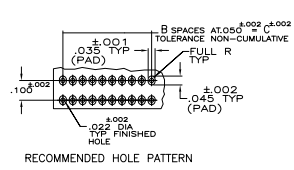
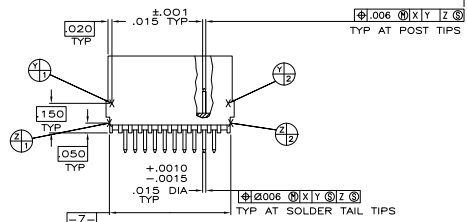
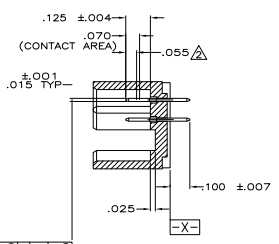
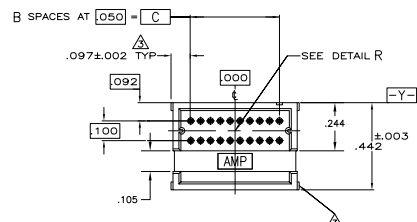
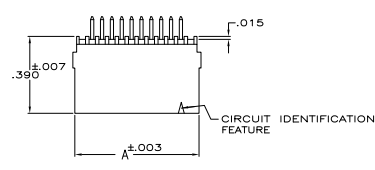


REV	DATE	DESCRIPTION	BY	CHK	APP
AD 39					
T		REV PER 0230-0107-05	14AN2005	MB	DR
TT		REVISED PER EC3-09-021826	28AUG09	KK	AEG



- △ CONTACT AREA PLATED WITH .000030 GOLD; SOLDER TAILS PLATED WITH .000150 TIN-LEAD, ALL OVER .000050 NICKEL
- △ POINT OF MEASUREMENT FOR PLATING THICKNESS
- △ THE NOTED DIMENSIONS APPLY AT THE INTERSECTION OF THE POST AND HOUSING
- △ CONTACT AREA PLATED WITH .000030 GOLD; SOLDER TAILS PLATED WITH .000150 TIN, ALL OVER .000050 NICKEL.
- △ OBSOLETE PARTS: OBSOLETE CIS STREAMLINING PER D.RENAUD/D.SINISI

NO	DESCRIPTION	QTY	UNIT	PRICE	AMOUNT	NO OF PART
△ 2.450		49	2.644	100	5-104076-8	
△ 1.200		24	1.394	50	5-104076-7	
△ OBSOLETE		.700	14	.894	30	5-104076-6
△ .700		4	.394	10	5-104076-5	
△ OBSOLETE		1.950	39	2.144	80	5-104076-4
△ .950		19	1.144	40	5-104076-3	
△ 1.450		29	1.644	60	5-104076-2	
△ .450		9	.644	20	5-104076-1	
△ 2.450		49	2.644	100	5-104076-8	
△ 1.200		24	1.394	50	5-104076-7	
△ .700		14	.894	30	5-104076-6	
△ .700		4	.394	10	5-104076-5	
△ 1.950		39	2.144	80	5-104076-4	
△ .950		19	1.144	40	5-104076-3	
△ 1.450		29	1.644	60	5-104076-2	
△ .450		9	.644	20	5-104076-1	
△ 2.450		49	2.644	100	5-104076-8	
△ 1.200		24	1.394	50	5-104076-7	
△ .700		14	.894	30	5-104076-6	
△ .700		4	.394	10	5-104076-5	
△ 1.950		39	2.144	80	5-104076-4	
△ .950		19	1.144	40	5-104076-3	
△ 1.450		29	1.644	60	5-104076-2	
△ .450		9	.644	20	5-104076-1	

THIS DRAWING IS A CONTROLLED DOCUMENT.		REV	DATE	BY	CHK	APP
REVISED PER EC3-09-021826		AD 39	12-18-08	MB	DR	
REVISED PER 0230-0107-05		T	12-18-08	14AN2005	MB	DR
REVISED PER EC3-09-021826		TT	12-18-08	28AUG09	KK	AEG

DESIGNER	DATE	NO OF PART
108-1093	12-18-08	1
114-25031	12-18-08	1

THIS DRAWING IS A CONTROLLED DOCUMENT.	REV	DATE	BY	CHK	APP
REVISED PER EC3-09-021826	AD 39	12-18-08	MB	DR	
REVISED PER 0230-0107-05	T	12-18-08	14AN2005	MB	DR
REVISED PER EC3-09-021826	TT	12-18-08	28AUG09	KK	AEG