

4

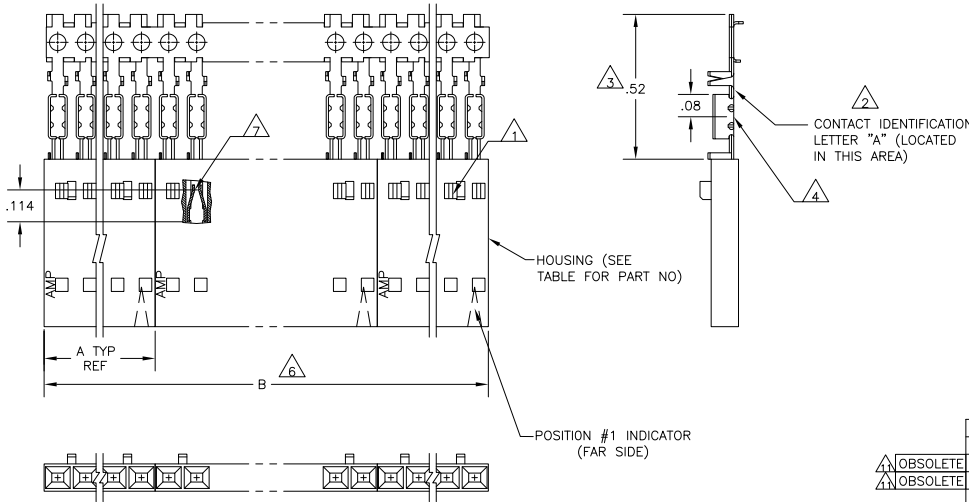
3

2

1

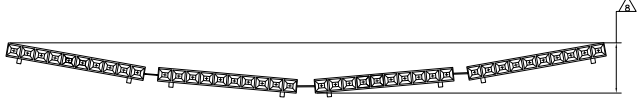
THIS DRAWING IS UNPUBLISHED. RELEASED FOR PUBLICATION  
 © COPYRIGHT BY TYCO ELECTRONICS CORPORATION. ALL RIGHTS RESERVED.

LOC	DIST	REVISIONS					
AD	00	P	LR	DESCRIPTION	DATE	BY	APPD
		J		EC 063C 0759 04	02FEB05	BSV	JLG
		J1		REVISED PER ECO-09-020689	02SEP09	KK	AEG



- 1 CONTACTS ARE LATCHED INTO THE PRELOAD WINDOWS
- 2 USE WITH #26-#30 AWG WIRE SIZE, .054/.030 INSULATION DIAMETER, .015 MAXIMUM INSULATION THICKNESS
- 3 THE DIMENSION APPLIES WITH THE FORWARD PRELOAD STOP IN CONTACT WITH THE HOUSING SURFACE
- 4 POINT OF MEASUREMENT FOR PLATING THICKNESS
- 5 FOR INDIVIDUAL ASSEMBLIES SEE PART NUMBER 103650
- 6 ASSEMBLIES ARE JOINED BY THE CARRIER STRIP. ORDER QUANTITY REFLECTS TOTAL NUMBER OF INDIVIDUAL ASSEMBLIES REQUIRED. SEE TABLE FOR NUMBER OF ASSEMBLIES PER STRIP.
- 7 POINT OF MEASUREMENT FOR PLATING THICKNESS (INSIDE BEAMS)
- 8 MAXIMUM ALLOWABLE BOW OF ASSEMBLY NOT TO EXCEED .055.
- 9 CONTACTS: .000100-.000200 BRIGHT TIN-LEAD OVER .000050 NICKEL
- 10 CONTACTS: .000100-.000200 MATTE TIN OVER .000050 NICKEL
- 11 OBSOLETE PARTS: OBSOLETE CIS STREAMLINING PER D.RENAUD/D.SINISI

		2	2.40	1.198	1-103648-1	12	6-103976-1
		2	2.20	1.098	1-103648-0	11	6-103976-0
△	OBSOLETE	2	2.00	.998	103648-9	10	5-103971-9
△	OBSOLETE	2	1.80	.898	103648-8	9	5-103971-8
		2	1.60	.798	103648-7	8	5-103971-7
△	OBSOLETE	2	1.40	.698	103648-6	7	5-103971-6
△	OBSOLETE	4	2.39	.598	103648-5	6	5-103971-5
		4	1.99	.498	103648-4	5	5-103971-4
		5	1.99	.398	103648-3	4	5-103971-3
		8	2.40	.298	103648-2	3	5-103971-2
		10	2.00	.198	103648-1	2	5-103971-1
△	OBSOLETE	2	2.40	1.198	1-103648-1	12	1-103971-1
△	OBSOLETE	2	2.20	1.098	1-103648-0	11	1-103971-0
△	OBSOLETE	2	2.00	.998	103648-9	10	103971-9
△	OBSOLETE	2	1.80	.898	103648-8	9	103971-8
△	SUPERSEDED	2	1.60	.798	103648-7	8	103971-7
△	OBSOLETE	2	1.40	.698	103648-6	7	103971-6
△	OBSOLETE	4	2.39	.598	103648-5	6	103971-5
		4	1.99	.498	103648-4	5	103971-4
		5	1.99	.398	103648-3	4	103971-3
		8	2.40	.298	103648-2	3	103971-2
		10	2.00	.198	103648-1	2	103971-1
PLATING	△6	B	A	HOUSING PART NUMBER	NO OF POSN	ASSEMBLY PART NUMBER ON STRIP	



THIS DRAWING IS A CONTROLLED DOCUMENT. DATE: 05 NOV 1986

DESIGNED BY: L. MAYER  
 CHECKED BY: P. C. DEJONG  
 DATE: 12-11-86

TYCO ELECTRONICS CORPORATION  
 Harrisburg, Pa 17105-3608

PRODUCT SPEC: 108-25034  
 APPLICATION SPEC: 114-25026

RCPT ASSY, AMPMODU MTE, SINGLE ROW, .100 CL, WITH GUIDE RIBS, FOR #26-#30 AWG WIRE SIZE, STRIP FORM

SIZE: A2  
 STOCK CODE: 00779  
 DRAWING NO: 103971

CUSTOMER DRAWING  
 SCALE: 4:1  
 SHEET: 1 of 1  
 REV: J1