

4

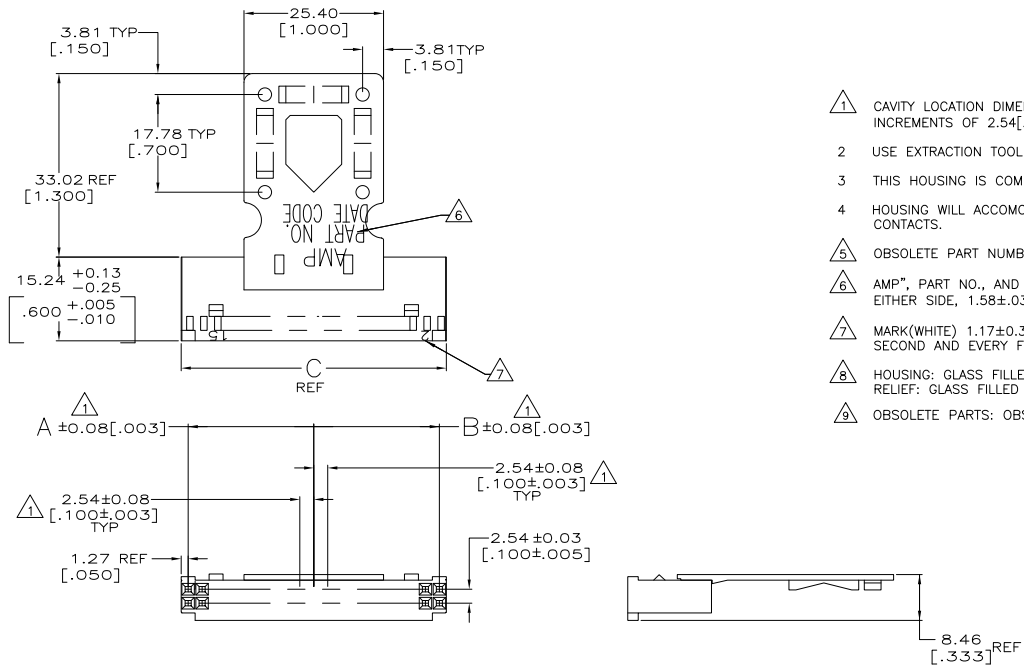
3

2

1

THIS DRAWING IS UNPUBLISHED.  
 RELEASED FOR PUBLICATION  
 ALL RIGHTS RESERVED.

LOC	DIST	REVISIONS			
F	LNK	DESCRIPTION	DATE	BY	APPD
AD	39	H3	REVISED PER ECO-11-004820	11MAR11	RK HMR



- △ CAVITY LOCATION DIMENSIONS INCREASE IN INCREMENTS OF 2.54[.100] TOLERANCE NON-CUMULATIVE.
- 2 USE EXTRACTION TOOL 91052-1 TO REMOVE RECEPTACLE CONTACTS.
- 3 THIS HOUSING IS COMPATIBLE WITH MOD II WHROUDED HEADERS.
- 4 HOUSING WILL ACCOMODATE ALL MOD IV, IV.5 AND MOD V CONTACTS.
- △ 5 OBSOLETE PART NUMBER.
- △ 6 AMP\*, PART NO., AND DATE CODE, MARKED(WHITE) EITHER SIDE, 1.58±.038[.046±.015] HIGH CHARACTERS.
- △ 7 MARK(WHITE) 1.17±0.38[.046±.015] HIGH CHARACTERS SECOND AND EVERY FIFTH CAVITY ONE SIDE.
- △ 8 HOUSING: GLASS FILLED NYLON, BLACK RELIEF: GLASS FILLED NYLON, BLACK
- △ 9 OBSOLETE PARTS: OBSOLETE CIS STREAMLINING PER D.RENAUD/D.SINISI

DIMENSIONS:		TOLERANCES UNLESS OTHERWISE SPECIFIED:		TE Connectivity	
mm	[INCHES]	PLC	OTHER	SIZE	CAGE CODE
0	PLC	±	—	A2	00779
1	PLC	±	—	C	87733
2	PLC	±	0.1%(.005)	—	
3	PLC	±	—	—	
4	PLC	±	—	—	
ANGLES		±	—	—	
FINISH		—	—	—	

4

3

2

1

THIS DRAWING IS UNPUBLISHED. RELEASED FOR PUBLICATION. ALL RIGHTS RESERVED.

LOC	DIST	REVISIONS			
F	LNK	DESCRIPTION	DATE	BY	APPD
-	-	SEE SHEET 1	-	-	-

NONE	81.28 [3.200]	38.10 [1.500]	40.64 [1.600]	64	△	5-87733-0
NONE	73.66 [2.900]	35.56 [1.400]	35.56 [1.400]	58	△	4-87733-9
NONE	71.12 [2.800]	33.02 [1.300]	35.56 [1.400]	56	△	4-87733-8
NONE	60.96 [2.400]	27.94 [1.100]	30.48 [1.200]	48	△	4-87733-7
NONE	91.44 [3.600]	43.18 [1.700]	45.72 [1.800]	72	△	4-87733-6
NONE	88.90 [3.500]	43.18 [1.700]	43.18 [1.700]	70	△	4-87733-5
NONE	83.82 [3.300]	40.64 [1.600]	40.64 [1.600]	66	△	4-87733-4
NONE	76.20 [3.000]	35.56 [1.400]	38.10 [1.500]	60	△	4-87733-3
NONE	68.58 [2.700]	33.02 [1.300]	33.02 [1.300]	54	△	4-87733-2
NONE	66.04 [2.600]	30.48 [1.200]	33.02 [1.300]	52	△	4-87733-1
NONE	63.50 [2.500]	30.48 [1.200]	30.48 [1.200]	50	△	4-87733-0
NONE	55.88 [2.200]	25.40 [1.000]	27.94 [1.100]	44	△	3-87733-9
NONE	53.34 [2.100]	25.40 [1.000]	25.40 [1.000]	42	△	3-87733-8
NONE	50.80 [2.000]	22.86 [.900]	25.40 [1.000]	40	△	3-87733-7
NONE	48.26 [1.900]	22.86 [.900]	22.86 [.900]	38	△	3-87733-6
NONE	45.72 [1.800]	20.32 [.800]	22.86 [.900]	36	△	3-87733-5
NONE	43.18 [1.700]	20.32 [.800]	20.32 [.800]	34	△	3-87733-4
NONE	40.64 [1.600]	17.78 [.700]	20.32 [.800]	32	△	3-87733-3
NONE	38.10 [1.500]	17.78 [.700]	17.78 [.700]	30	△	3-87733-2
NONE	35.56 [1.400]	15.24 [.600]	17.78 [.700]	28	△	3-87733-1
NONE	33.02 [1.300]	15.24 [.600]	15.24 [.600]	26	△	3-87733-0
NONE	30.48 [1.200]	12.70 [.500]	15.24 [.600]	24	△	2-87733-9
NONE	27.94 [1.100]	12.70 [.500]	12.70 [.500]	22	△	2-87733-8
NONE	25.4 [1.000]	10.16 [.400]	12.70 [.500]	20	△	2-87733-7
ALL	81.28 [3.200]	38.10 [1.500]	40.64 [1.600]	64	△	2-87733-6
MARKING	C	B	A	NO OF POSN	PART NUMBER	

ALL	73.66 [2.900]	35.56 [1.400]	35.56 [1.400]	58	△	2-87733-5
ALL	71.12 [2.800]	33.02 [1.300]	35.56 [1.400]	56	△	2-87733-4
ALL	60.96 [2.400]	27.94 [1.100]	30.48 [1.200]	48	△	2-87733-3
-	-	-	-	-	-	-
-	-	-	-	-	-	-
ALL	91.44 [3.600]	43.18 [1.700]	45.72 [1.800]	72	△	2-87733-0
ALL	88.90 [3.500]	43.18 [1.700]	43.18 [1.700]	70	△	1-87733-9
ALL	83.82 [3.300]	40.64 [1.600]	40.64 [1.600]	66	△	1-87733-8
ALL	76.20 [3.000]	35.56 [1.400]	38.10 [1.500]	60	△	1-87733-7
ALL	68.58 [2.700]	33.02 [1.300]	33.02 [1.300]	54	△	1-87733-6
ALL	66.04 [2.600]	30.48 [1.200]	33.02 [1.300]	52	△	1-87733-5
ALL	63.50 [2.500]	30.48 [1.200]	30.48 [1.200]	50	△	1-87733-4
ALL	55.88 [2.200]	25.40 [1.000]	27.94 [1.100]	44	△	1-87733-3
ALL	53.34 [2.100]	25.40 [1.000]	25.40 [1.000]	42	△	1-87733-2
ALL	50.80 [2.000]	22.86 [.900]	25.40 [1.000]	40	△	1-87733-1
ALL	48.26 [1.900]	22.86 [.900]	22.86 [.900]	38	△	1-87733-0
ALL	45.72 [1.800]	20.32 [.800]	22.86 [.900]	36	△	87733-9
ALL	43.18 [1.700]	20.32 [.800]	20.32 [.800]	34	△	87733-8
ALL	40.64 [1.600]	17.78 [.700]	20.32 [.800]	32	△	87733-7
ALL	38.10 [1.500]	17.78 [.700]	17.78 [.700]	30	△	87733-6
ALL	35.56 [1.400]	15.24 [.600]	17.78 [.700]	28	△	87733-5
ALL	33.02 [1.300]	15.24 [.600]	15.24 [.600]	26	△	87733-4
ALL	30.48 [1.200]	12.70 [.500]	15.24 [.600]	24	△	87733-3
ALL	27.94 [1.100]	12.70 [.500]	12.70 [.500]	22	△	87733-2
ALL	25.4 [1.000]	10.16 [.400]	12.70 [.500]	20	△	87733-1
MARKING	C	B	A	NO OF POSN	PART NUMBER	

THIS DRAWING IS A CONTROLLED DOCUMENT. DIM E BRANDBERG 6-16-94  
CHK SREMOICH 6-16-94

DIMENSIONS: mm [INCHES]

TOLERANCES UNLESS OTHERWISE SPECIFIED:  
 0 PLC ± .1  
 1 PLC ± .15  
 2 PLC ± .2  
 3 PLC ± .3  
 4 PLC ± .4  
 ANGLES ± .5

PRODUCT SPEC: -  
 APPLICATION SPEC: -  
 WEIGHT: -

MATERIAL: △  
 FINISH: -

SIZE: A2  
 CASE CODE: 00779  
 DRAWING NO: C-87733

RESTRICTED TO: -  
 CUSTOMER DRAWING  
 SCALE: 2:1 SHEET 2 of 2 REV: H3

TE Connectivity  
 HOUSING ASSEMBLY, MOD IV,  
 DBL ROW, 2.54[.100]

87733

A

H3