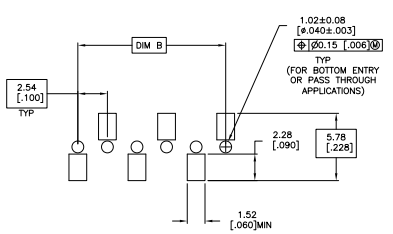
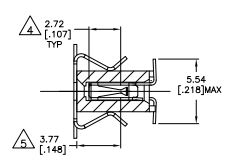
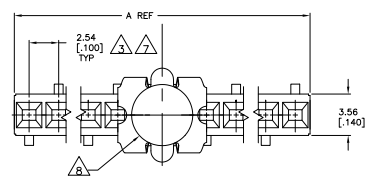
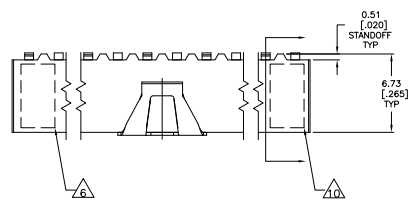


THIS DRAWING IS UNPUBLISHED. ALL RIGHTS RESERVED.
 © 2002 BY TDS ELECTRONICS CORPORATION. ALL RIGHTS RESERVED.

REV	DATE	DESCRIPTION	BY	APP
00				
01		REVISED PER ECO-10-020016		



RECOMMENDED PC BOARD PAD PATTERN
 0.20 [0.008] THICK STENCIL

- △ HOUSING: GLASS FILLED, FLAME RETARDANT POLYESTER, BLACK CONTACTS: PHOSPHOR BRONZE, VACUUM COVER: STAINLESS STEEL.
- △ CONTACTS: DUPLEX PLATED: 0.76μm [0.00030] GOLD IN CONTACT AREA 3.81-7.62μm [0.00150-0.00300] BRIGHT TIN-LEAD ON LEADS, ALL OVER 1.27μm [0.00050] MINIMUM NICKEL.
- △ THESE DIMENSIONS PERTAIN TO CAVITY CENTERLINES ONLY, NOT TO CONTACT LOCATION.
- △ POINT OF MEASUREMENT FOR PLATING THICKNESS.
- △ POINT OF CONTACT DIMENSION.
- △ DATE CODE AND PART NUMBER, ARE MARKED IN APPROXIMATE LOCATION SHOWN.
- △ TOLERANCE IS NON-CUMULATIVE.
- △ 5.2 [0.205] MIN TARGET AREA FOR VACUUM PICK-UP COVERS TO BE REMOVED AFTER SOLDERING.
- △ FOR 2 POS, DATE CODE IS STAMPED OPPOSITE SIDE OF TE LOGO.
- △ TE LOGO AND CSA LOGO ARE MOLDED INTO HOUSING.
- △ NO PART NUMBER MARKING REQUIRED ON THIS PART.
- △ CONTACT: DUPLEX PLATED: 0.76 MICROMETERS (0.00030) GOLD IN CONTACT AREA, 3.81-7.62 MICROMETERS (0.00150-0.00300) MATTE TIN ON LEADS, ALL OVER 1.27 MICROMETERS (0.00050) MINIMUM NICKEL.
- △ ROHS 2002/95/EC COMPLIANT
- △ OBSOLETE PARTS: OBSOLETE CIS STREAMLINING PER D.RENAUD/D.SINISI

△	99.06 [3.900]	101.6 [4.000]	40	3-147738-9
△	96.52 [3.800]	99.06 [3.900]	39	3-147738-8
△	93.98 [3.700]	96.52 [3.800]	38	3-147738-7
△	91.44 [3.600]	93.98 [3.700]	37	3-147738-6
△	88.90 [3.500]	91.44 [3.600]	36	3-147738-5
△	86.34 [3.400]	88.90 [3.500]	35	3-147738-4
△	83.82 [3.300]	86.34 [3.400]	34	3-147738-3
△	81.28 [3.200]	83.82 [3.300]	33	3-147738-2
△	78.74 [3.100]	81.28 [3.200]	32	3-147738-1
△	76.20 [3.000]	78.74 [3.100]	31	3-147738-0
△	73.66 [2.900]	76.20 [3.000]	30	2-147738-9
△	71.12 [2.800]	73.66 [2.900]	29	2-147738-8
△	68.58 [2.700]	71.12 [2.800]	28	2-147738-7
△	66.04 [2.600]	68.58 [2.700]	27	2-147738-6
△	63.5 [2.500]	66.04 [2.600]	26	2-147738-5
△	60.96 [2.400]	63.5 [2.500]	25	2-147738-4
△	58.42 [2.300]	60.96 [2.400]	24	2-147738-3
△	55.88 [2.200]	58.42 [2.300]	23	2-147738-2
△	53.34 [2.100]	55.88 [2.200]	22	2-147738-1
△	50.8 [2.000]	53.34 [2.100]	21	2-147738-0
△	48.26 [1.900]	50.8 [2.000]	20	1-147738-9
△	45.72 [1.800]	48.26 [1.900]	19	1-147738-8
△	43.18 [1.700]	45.72 [1.800]	18	1-147738-7
△	40.64 [1.600]	43.18 [1.700]	17	1-147738-6
△	38.1 [1.500]	40.64 [1.600]	16	1-147738-5
△	35.56 [1.400]	38.1 [1.500]	15	1-147738-4
△	33.02 [1.300]	35.56 [1.400]	14	1-147738-3
△	30.48 [1.200]	33.02 [1.300]	13	1-147738-2
△	27.94 [1.100]	30.48 [1.200]	12	1-147738-1
△	25.4 [1.000]	27.94 [1.100]	11	1-147738-0
△	22.86 [0.900]	25.4 [1.000]	10	147738-9
△	20.32 [0.800]	22.86 [0.900]	9	147738-8
△	17.78 [0.700]	20.32 [0.800]	8	147738-7
△	15.24 [0.600]	17.78 [0.700]	7	147738-6
△	12.7 [0.500]	15.24 [0.600]	6	147738-5
△	10.16 [0.400]	12.7 [0.500]	5	147738-4
△	7.62 [0.300]	10.16 [0.400]	4	147738-3
△	5.08 [0.200]	7.62 [0.300]	3	147738-2
△	2.54 [0.100]	5.08 [0.200]	2	147738-1

FINISH	B	A	NO OF POSN	PART NUMBER
THIS DRAWING IS A CONTROLLED DOCUMENT.				
DESIGNED BY	REVISED BY	DATE	TDS ELECTRONICS CORPORATION Harrisburg, Pa 17105-3008	
DRWING NO (INDEX)	REVISED LEVEL	DATE	REPT. ASSY., MOD IV, SINGLE ROW, 100 CL SURFACE MOUNT, VERTICAL, DUAL ENTRY CLOSED ENTRY	
108-25026	108-25026	114-25018	SIZE	DATE SIZE DRAWING ID
			A1	00779 (S)=147738
			FILE	6.1

THIS DRAWING IS UNPUBLISHED. ALL RIGHTS RESERVED.
 © 2008 BY TDS ELECTRONICS CORPORATION

REV	DATE	DESCRIPTION	BY	CHK	APP
AD	00	SEE SHEET 1			

99.06 [3.900]	101.6 [4.000]	40	8-147738-9
96.52 [3.800]	99.06 [3.900]	39	8-147738-8
93.98 [3.700]	96.52 [3.800]	38	8-147738-7
91.44 [3.600]	93.98 [3.700]	37	8-147738-6
88.90 [3.500]	91.44 [3.600]	36	8-147738-5
86.34 [3.400]	88.90 [3.500]	35	8-147738-4
83.82 [3.300]	86.34 [3.400]	34	8-147738-3
81.28 [3.200]	83.82 [3.300]	33	8-147738-2
78.74 [3.100]	81.28 [3.200]	32	8-147738-1
76.20 [3.000]	78.74 [3.100]	31	8-147738-0
73.66 [2.900]	76.20 [3.000]	30	7-147738-9
71.12 [2.800]	73.66 [2.900]	29	7-147738-8
68.58 [2.700]	71.12 [2.800]	28	7-147738-7
66.04 [2.600]	68.58 [2.700]	27	7-147738-6
63.5 [2.500]	66.04 [2.600]	26	7-147738-5
60.96 [2.400]	63.5 [2.500]	25	7-147738-4
58.42 [2.300]	60.96 [2.400]	24	7-147738-3
55.88 [2.200]	58.42 [2.300]	23	7-147738-2
53.34 [2.100]	55.88 [2.200]	22	7-147738-1
50.8 [2.000]	53.34 [2.100]	21	7-147738-0
48.26 [1.900]	50.8 [2.000]	20	6-147738-9
45.72 [1.800]	48.26 [1.900]	19	6-147738-8
43.18 [1.700]	45.72 [1.800]	18	6-147738-7
40.64 [1.600]	43.18 [1.700]	17	6-147738-6
38.1 [1.500]	40.64 [1.600]	16	6-147738-5
35.56 [1.400]	38.1 [1.500]	15	6-147738-4
33.02 [1.300]	35.56 [1.400]	14	6-147738-3
30.48 [1.200]	33.02 [1.300]	13	6-147738-2
27.94 [1.100]	30.48 [1.200]	12	6-147738-1
25.4 [1.000]	27.94 [1.100]	11	6-147738-0
22.86 [900]	25.4 [1.000]	10	5-147738-9
20.32 [800]	22.86 [900]	9	5-147738-8
17.78 [700]	20.32 [800]	8	5-147738-7
15.24 [600]	17.78 [700]	7	5-147738-6
12.7 [500]	15.24 [600]	6	5-147738-5
10.16 [400]	12.7 [500]	5	5-147738-4
7.62 [300]	10.16 [400]	4	5-147738-3
5.08 [200]	7.62 [300]	3	5-147738-2
2.54 [100]	5.08 [200]	2	5-147738-1

△△ OBSOLETE

△△ OBSOLETE

FINISH	B	A	NO OF POSN	PART NUMBER
THIS DRAWING IS A CONTROLLED DOCUMENT.				
DESIGNED BY	APPROVED BY	DATE	TDS ELECTRONICS CORPORATION Harrisburg, Pa 17105-3608	
108-25026			RECPY. ASSY., MOD IV, SINGLE ROW, 100 CL. SURFACE MOUNT, VERTICAL, DUAL ENTRY CLOSED ENTRY	
114-25018			SIZE	DATE SIZE DRAWING ID
			A1	00779 (S)=147738
			REV	DATE
			6.1	2 2