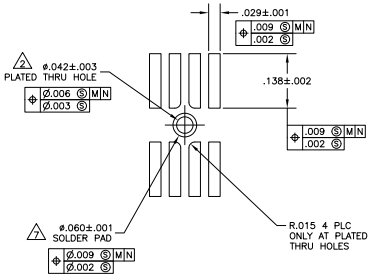
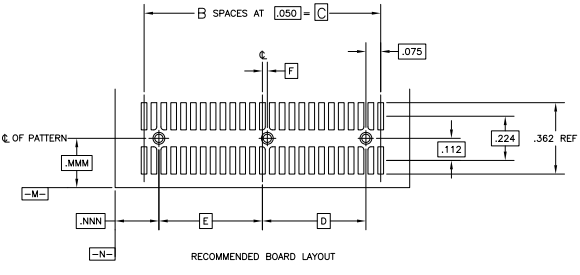
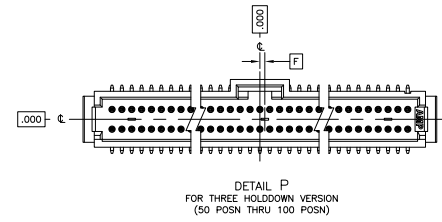
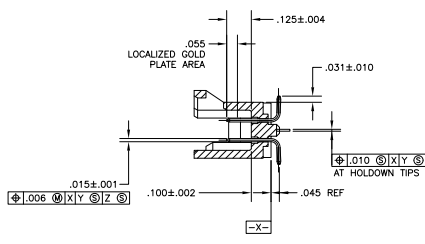
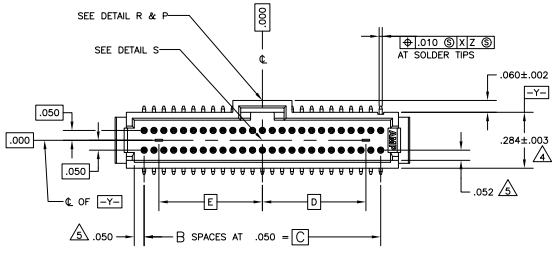
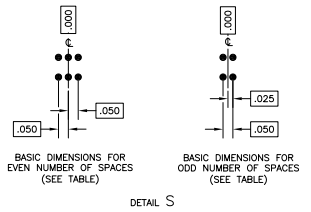
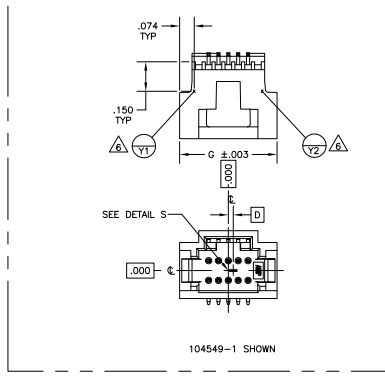
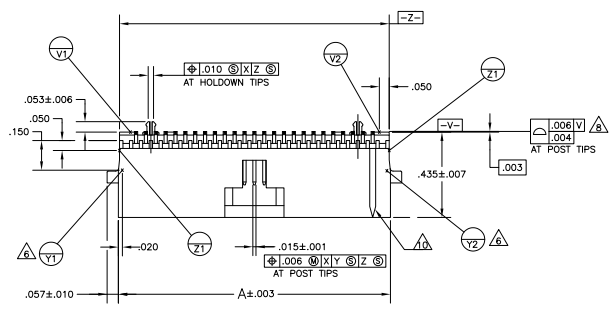


THIS DRAWING IS UNPUBLISHED
 ALL RIGHTS RESERVED

REV	DATE	DESCRIPTION	BY	CHK
AD 00	11/11/11	REVISED PER EDD-11-620873	KH	JQ



SEE SHEET 2 OF 2 FOR DASH NUMBERS AND NOTES

THIS DRAWING IS A CONTROLLED DOCUMENT.		REV. #	ISSUED/DATE	ISSUED BY	DATE
WORKS		REV. #	ISSUED/DATE	ISSUED BY	DATE
DESIGNED BY		REV. #	ISSUED/DATE	ISSUED BY	DATE
CHECKED BY		REV. #	ISSUED/DATE	ISSUED BY	DATE
DRAWN BY		REV. #	ISSUED/DATE	ISSUED BY	DATE
APP. BY		REV. #	ISSUED/DATE	ISSUED BY	DATE
DATE		REV. #	ISSUED/DATE	ISSUED BY	DATE
CUSTOMER DRAWING		REV. #	ISSUED/DATE	ISSUED BY	DATE

THIS DRAWING IS UNPUBLISHED
 ALL RIGHTS RESERVED

REV	DATE	DESCRIPTION	BY	APP'D
AD	00	SEE SHEET 1	-	-

- 1. .00030 GOLD IN LOCALIZED PLATE AREA, .000150 TIN-LEAD ON SOLDER TAILS ALL OVER .000050 NICKEL.
- 2. USE .0465±.0010 DRILLED HOLE (#56 DRILL) WITH .001 MIN COPPER.
- 3. CIRCUIT IDENTIFICATION FEATURE OMITTED ON 10 POSITION HEADER ASSEMBLIES.
- 4. DIMENSION APPLIES AT BASE OF SHROUD.
- 5. THE NOTED DIMENSIONS APPLY AT THE MATING FACE OF THE HOUSING.
- 6. Y3 Y4 ARE LOCATED THE SAME AS Y1 Y2 EXCEPT ON OPPOSITE SIDE OF HOUSING.
- 7. PADS ON THE OPPOSITE SIDE OF THE BOARD TO BE #.065 MINIMUM.
- 8. REFER TO NO. OF POSN. IN CHART FOR NUMBER OF SURFACES THAT ARE TO BE COPLALAR.
- 9. .00030 GOLD IN LOCALIZED PLATE AREA, .000150 TIN ON SOLDER TAILS, ALL OVER .000050 NICKEL.
- 10. NO CIRCUIT IDENTIFICATION FEATURE ON 10,12,20,24 AND 30 POSITION PARTS.

-	-	.000	.250	5	.430	12	6-104549-1
.000	1.150	1.150	2.450	49	2.630	100	6-104549-0
.000	.900	.900	1.950	39	2.130	80	5-104549-9
.000	.650	.650	1.450	29	1.630	60	5-104549-8
.025	.625	.625	1.200	24	1.380	50	5-104549-7
-	.400	.400	.950	19	1.130	40	5-104549-6
-	.275	.275	.700	14	.880	30	5-104549-5
OBSELETE	.225	.225	.600	12	.780	26	5-104549-4
-	.200	.200	.550	11	.730	24	5-104549-3
-	.150	.150	.450	9	.630	20	5-104549-2
.494	-	.025	.200	4	-	10	5-104549-1
-	-	.000	.250	5	.430	12	1-104549-1
.000	1.150	1.150	2.450	49	2.630	100	1-104549-0
.000	.900	.900	1.950	39	2.130	80	104549-9
.000	.650	.650	1.450	29	1.630	60	104549-8
.025	.625	.625	1.200	24	1.380	50	104549-7
-	.400	.400	.950	19	1.130	40	104549-6
.275	.275	.700	14	.880	30	104549-5	
OBSELETE	.225	.225	.600	12	.780	26	104549-4
-	.200	.200	.550	11	.730	24	104549-3
-	.150	.150	.450	9	.630	20	104549-2
.494	-	.025	.200	4	-	10	104549-1

	G	F	E	D	C	B	A	NO OF POSN	PART NUMBER
-	-	.000	.250	5	.430	12	6-104549-1		
.000	1.150	1.150	2.450	49	2.630	100	6-104549-0		
.000	.900	.900	1.950	39	2.130	80	5-104549-9		
.000	.650	.650	1.450	29	1.630	60	5-104549-8		
.025	.625	.625	1.200	24	1.380	50	5-104549-7		
-	.400	.400	.950	19	1.130	40	5-104549-6		
-	.275	.275	.700	14	.880	30	5-104549-5		
OBSELETE	.225	.225	.600	12	.780	26	5-104549-4		
-	.200	.200	.550	11	.730	24	5-104549-3		
-	.150	.150	.450	9	.630	20	5-104549-2		
.494	-	.025	.200	4	-	10	5-104549-1		

THIS DRAWING IS A CONTROLLED DOCUMENT. SEE M. SEERED/UT/SECRET

TE Connectivity
 TE CONNECTIVITY
 HEADERS ASSEMBLY, W/SIDE & END LATCHES, VERTICAL, SHROUDED, DOUBLE ROW,SURFACE MOUNT, AMPRODU System 50, W/HOLODOWNS

DATE: 10/07/79
 DRAWING NO: 104549
 CUSTOMER DRAWING