

4

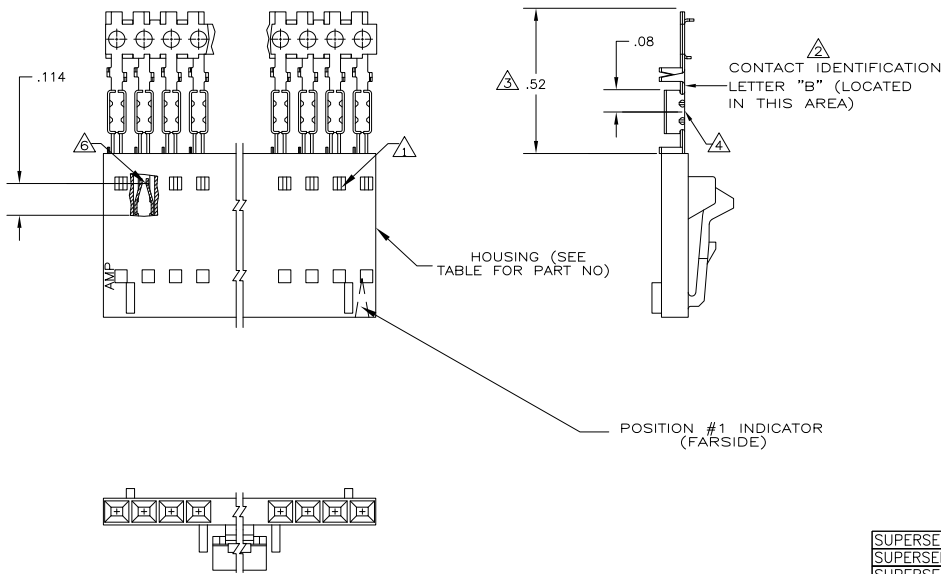
3

2

1

THIS DRAWING IS UNPUBLISHED. RELEASED FOR PUBLICATION. ALL RIGHTS RESERVED.

LOC	DIST	REVISIONS					
AD	00	P	LTR	DESCRIPTION	DATE	BY	APPD
		T2		REVISED PER ECO-11-005027	12MAR11	RK	HMR



- 1 CONTACTS ARE LATCHED INTO THE PRELOAD WINDOWS
- 2 USE WITH #22-#26 AWG WIRE SIZE, .054/.030 INSULATION DIAMETER, .015 MAXIMUM INSULATION THICKNESS
- 3 THE DIMENSION APPLIES WITH THE FORWARD PRELOAD STOP IN CONTACT WITH THE HOUSING SURFACE
- 4 POINT OF MEASUREMENT FOR PLATING THICKNESS
- 5 FOR STRIP ASSEMBLIES SEE PART NUMBER 103956
- 6 POINT OF MEASUREMENT FOR PLATING THICKNESS (INSIDE BEAMS)
- 7 CONTACTS: .000100-.000200 BRIGHT TIN-LEAD OVER .000050 NICKEL
- 8 .000100-.000200 MATTE TIN OVER .000050 NICKEL
- 9 OBSOLETE PARTS: OBSOLETE CIS STREAMLINING PER D.RENAUD/D.SINISI

REVISION	DATE	BY	APPD
2-104257-4	25		7-103645-4
2-104257-3	24		7-103645-3
2-104257-2	23		7-103645-2
2-104257-1	22		7-103645-1
2-104257-0	21		7-103645-0
1-104257-9	20		6-103645-9
1-104257-8	19		6-103645-8
1-104257-7	18		6-103645-7
1-104257-6	17		6-103645-6
1-104257-5	16		6-103645-5
1-104257-4	15		6-103645-4
1-104257-3	14		6-103645-3
1-104257-2	13		6-103645-2
2-104257-4	25		2-103645-4
2-104257-3	24		2-103645-3
2-104257-2	23		2-103645-2
2-104257-1	22		2-103645-1
2-104257-0	21		2-103645-0
1-104257-9	20		1-103645-9
1-104257-8	19		1-103645-8
1-104257-7	18		1-103645-7
1-104257-6	17		1-103645-6
1-104257-5	16		1-103645-5
1-104257-4	15		1-103645-4
1-104257-3	14		1-103645-3
1-104257-2	13		1-103645-2
1-104257-1	12		1-103645-1
1-104257-0	11		1-103645-0
104257-9	10		103645-9
104257-8	9		103645-8
104257-7	8		103645-7
104257-6	7		103645-6
104257-5	6		103645-5
104257-4	5		103645-4
104257-3	4		103645-3
104257-2	3		103645-2
104257-1	2		103645-1

THIS DRAWING IS A CONTROLLED DOCUMENT.

DIMENSIONS: INCHES	TE CONNECTIVITY
0 PLC ± .010	11-4-06
1 PLC ± .005	11-12-06
2 PLC ± .003	11-12-06
3 PLC ± .002	
4 PLC ± .001	
5 ANGLE ± .005	
6 ANGLE ± .002	
7 ANGLE ± .001	
8 ANGLE ± .0005	
9 ANGLE ± .0002	

MATERIAL: HOUSING PLATE: COPPER/BRASS; CONTACTS: PHOS BRONZE

FINISH: SEE TABLE

TE CONNECTIVITY  
RCPT ASSY, AMPMODU MTE, SINGLE, LATCHED & POLARIZED, FOR #22-#26 AWG WIRE SIZE

SIZE: A2; CASE CODE (DRAWING NO): 00779; C=103645

CUSTOMER DRAWING

SCALE: 4:1; SHEET: 1 of 1; REV: T2

103645

A