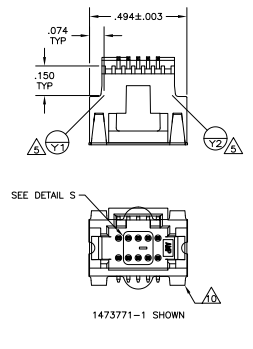
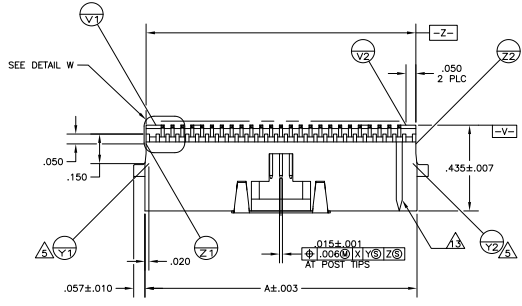
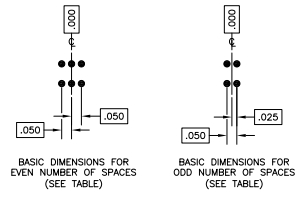
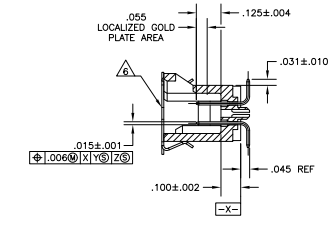
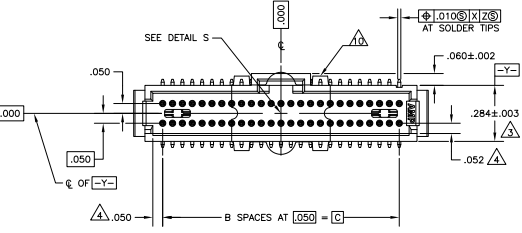


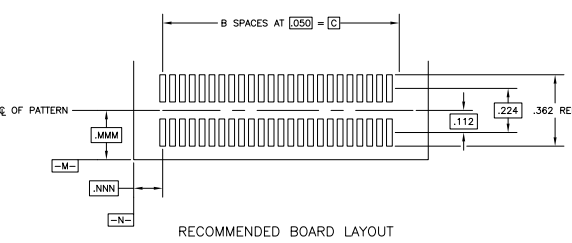
REV	DATE	DESCRIPTION	BY	APP
00		REVISED PER EDD-11-620873	170CT11	KH JQ



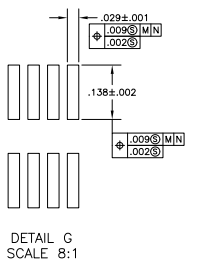
- 1 .00030 GOLD IN LOCALIZED PLATE AREA, .000150 TIN-LEAD ON SOLDER TAILS ALL OVER .000050 NICKEL.
  - 2 CIRCUIT IDENTIFICATION FEATURE OMITTED ON 10 POSITION HEADER ASSEMBLIES.
  - 3 DIMENSION APPLIES AT BASE OF SHROUD.
  - 4 THE NOTED DIMENSIONS APPLY AT THE MATING FACE OF THE HOUSING.
  - 5 (V1) (V2) ARE LOCATED THE SAME AS (V1) (V2) EXCEPT ON OPPOSITE SIDE OF HOUSING.
  - 6 VACUUM COVER DESIGNED FOR .160 [4mm] DIA NOZZLE. VACUUM COVER TO BE REMOVED AFTER SOLDERING.
  - 7 PACKAGED IN TAPE AND REEL PER EIA-481 SPECIFICATIONS. SEE CHART FOR TAPE WIDTHS.
- HOUSING: PPA  
 CONTACT: PHOSPHOR BRONZE  
 VACUUM COVER: ALUMINUM
- VACUUM COVER SHOWN IN PHANTOM LINE.
- .00030 GOLD IN LOCALIZED PLATE AREA, .000150 TIN ON SOLDER TAILS, ALL OVER .000050 NICKEL.
- OBsolete PARTS: OBsolete CIS STREAMLINING PER D.RENAUD / D.SINISI
- NO CIRCUIT IDENTIFICATION FEATURE ON 10,12,20,24 AND 30 POSITION PARTS.



DETAIL S



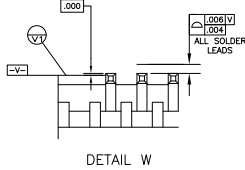
RECOMMENDED BOARD LAYOUT



DETAIL G SCALE 8:1



VACUUM COVER



DETAIL W

OBsolete	56MM	1.050	2.1	1.230	44	116-147377-0
	44mm	.550	1.1	.730	24	5-147377-9
	88mm	2.450	4.9	2.630	100	115-147377-8
	88mm	1.950	3.9	2.130	80	115-147377-7
	72mm	1.450	2.9	1.630	60	115-147377-6
	56mm	1.200	2.4	1.380	50	115-147377-5
	56mm	.950	1.9	1.130	40	115-147377-4
	56mm	.700	1.4	.880	30	115-147377-3
	44mm	.450	.9	.630	20	115-147377-2
	32mm	.200	.4	—	10	5-147377-1
	56MM	1.050	2.1	1.230	44	4-147377-0
	44mm	.550	1.1	.730	24	147377-9
	88mm	2.450	4.9	2.630	100	147377-8
	88mm	1.950	3.9	2.130	80	147377-7
	72mm	1.450	2.9	1.630	60	147377-6
	56mm	1.200	2.4	1.380	50	147377-5
	56mm	.950	1.9	1.130	40	147377-4
	56mm	.700	1.4	.880	30	147377-3
	44mm	.450	.9	.630	20	147377-2
	32mm	.200	.4	—	10	147377-1
TAPE WIDTHS	C	B	A	NO OF POSN	PART NUMBER	

THIS DRAWING IS A CONTROLLED DOCUMENT	DATE	BY	APPROVED	TE Connectivity
DESIGNED BY: [Signature]	108-1093	114-25035	[Signature]	TE Connectivity
CHECKED BY: [Signature]	108-1093	114-25035	[Signature]	TE Connectivity
APPROVED BY: [Signature]	108-1093	114-25035	[Signature]	TE Connectivity
CUSTOMER DRAWING	A100778	Q=147377	REV 4.1	1 1 E4