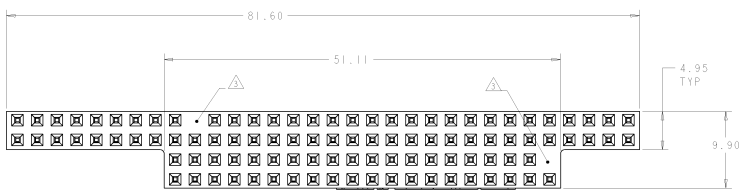
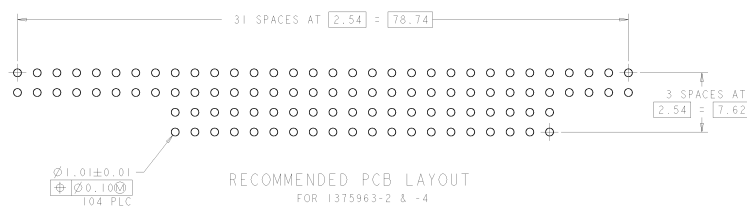
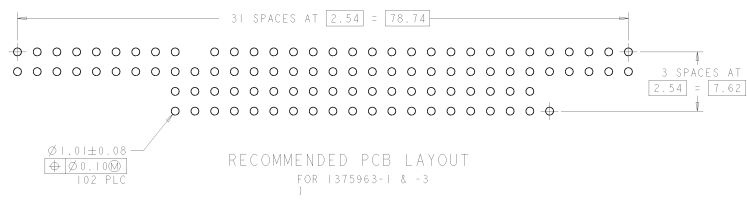
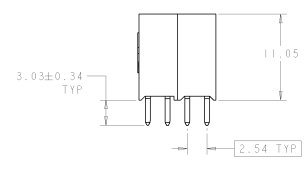
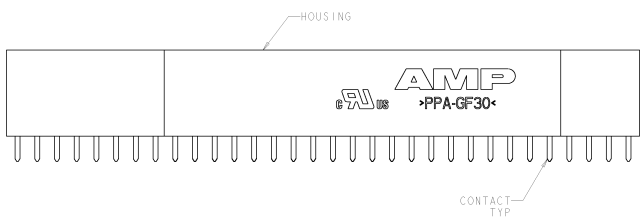


8	7	6	5	4	3	2	1
REVISED PER EC011-00204	REVISED PER EC011-00204						

REV. NO.	REV. DATE	REV. BY	REV. DESCRIPTION
AD 00			
C1 REVISED PER EC011-00204			DAPE11 RK HMR



- △ HOUSING: HIGH TEMPERATURE, GLASS FILLED NYLON, COLOR: BLACK, CONTACTS: PHOSPHOR BRONZE.
- △ CONTACTS: 0.000381 MIN GOLD ON MATING RECEPTACLE END, 0.00254 BRIGHT TIN-LEAD ON REMAINDER, ALL OVER 0.001270 NICKEL.
- △ NO CONTACT IN THIS POSITION, FOR PART NUMBER 1375963-1 & -3 ONLY.
- △ CONTACTS: 0.000381 MIN GOLD ON MATING RECEPTACLE END, 0.00254-0.00503 MATTE TIN ON REMAINDER, ALL OVER 0.001270 NICKEL.
- △ ROHS 2002/95/EC COMPLIANT PART TO BE USED WITH ROHS 2002/95/EC COMPLIANT PCB'S.



△	△	NO	1375963-4
△	△	△ YES	1375963-3
△	△	NO	1375963-2
△	△	△ YES	1375963-1
FINISH		KEYED CIRCUITS	PART NO

MANUFACTURER	AMP	DESIGNER	TE CONNECTIVITY
DATE	198-1958	REV	ASSEMBLY: PC/104, NON-STACKTHROUGH CONTACTS, SOLDER
REV	114-13021	DATE	00 0778 (C)-1375963
MATERIAL	PPA	CUSTOMER DRAWING	