

4

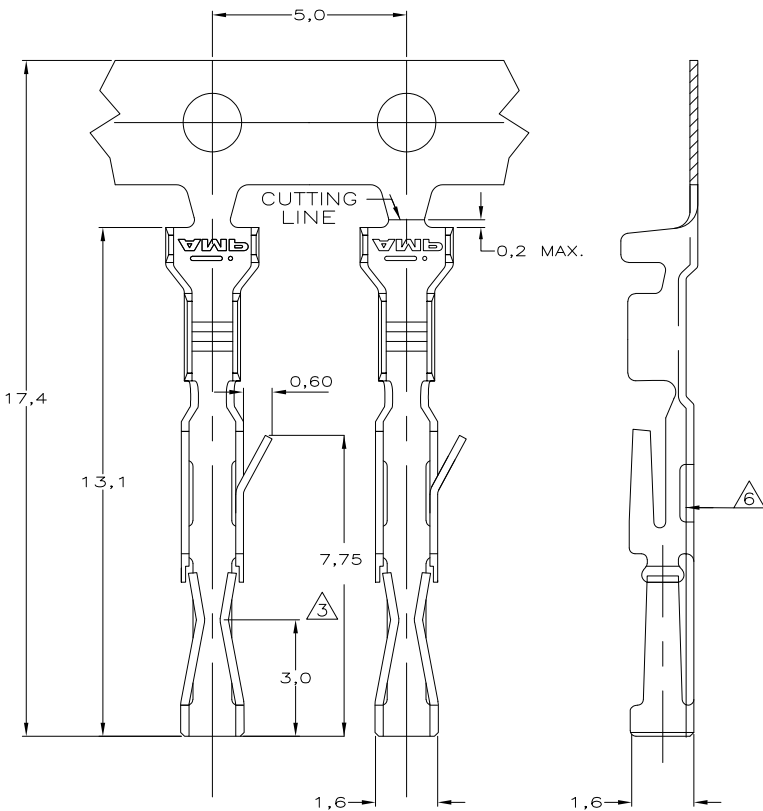
3

2

1

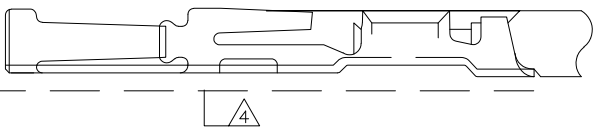
THIS DRAWING IS UNPUBLISHED.
 DIFFUSION RESTREINTE AHP
 RELEASED FOR PUBLICATION
 ALL RIGHTS RESERVED.
 TOUS DROITS RESERVES

LOC	DIST	REVISIONS					
F	7	P	LTR REV	DESCRIPTION MODIFICATIONS	DATE	DWN DESS.	APVD APP.
		G1		REVISED PER ECO-11-005150	21MAR11	RK	HMR



NOTES:

- ⚠ CONTACT MATERIAL: PHOSPHORBRONZE
- ⚠ PLATING: MIN. 2,5µm Sn
- ⚠ CONTACT POINT
- ⚠ BOTTOM OF CONTACT TO BE STRAIGHT AFTER CRIMPING OF WIRE
- 5 WIRE RANGE: 0,08-0,22mm²
- INSULATION RANGE: 0,80-1,50 DIA.
- ⚠ OPTIONAL
- 7 THE CONTACT MEETS THE REQUIREMENT OF INTERNATIONAL STANDARD IEC 603-8
- ⚠ LOOSE PIECE VERSION



THIS DRAWING IS A CONTROLLED DOCUMENT. CE PLAN EST UN DOCUMENT CONTROLE		DWN/DESSINE 22-NOV-04 Jean-Jacques DESPRETZ		188744-1		182734-2		⚠	
DIMENSIONS: mm		TOLERANCES UNLESS OTHERWISE SPECIFIED: (SUIV NB DE DECIMALES) 0-PLC/DEE ± -		FINISH		MATERIAL		PART NUMBER	
1-PLC/DEE ± -		2-PLC/DEE ± -		T CORRIOLU		188744-1			
3-PLC/DEE ± -		4-PLC/DEE ± -		APVD / APPROUVE Y PETRONIN		TE Connectivity			
ANGLES ± -		FINISH		NAME TITRE		HE1402 CONNECTOR (TIN VERSION)			
MATERIAL MATIERE		APPLICATION SPEC SPEC. APPLICATION		PRODUCT SPEC SPEC. PRODUIT		CRIMP CONTACT (AWG 28-24)			
		WEIGHT MASSE APPROX. -		SIZE FORMAT A3		CAGE CODE CAGE CODE 00779		DRAWING NO No. PLAN C=188744	
		CUSTOMER DRAWING/PLAN CLIENT		UNIQUEMENT POUR REFERENCE		SCALE ECHELLE 1:1		SHEET FEUILLE 1 DE 1	
								REV G1	