

4

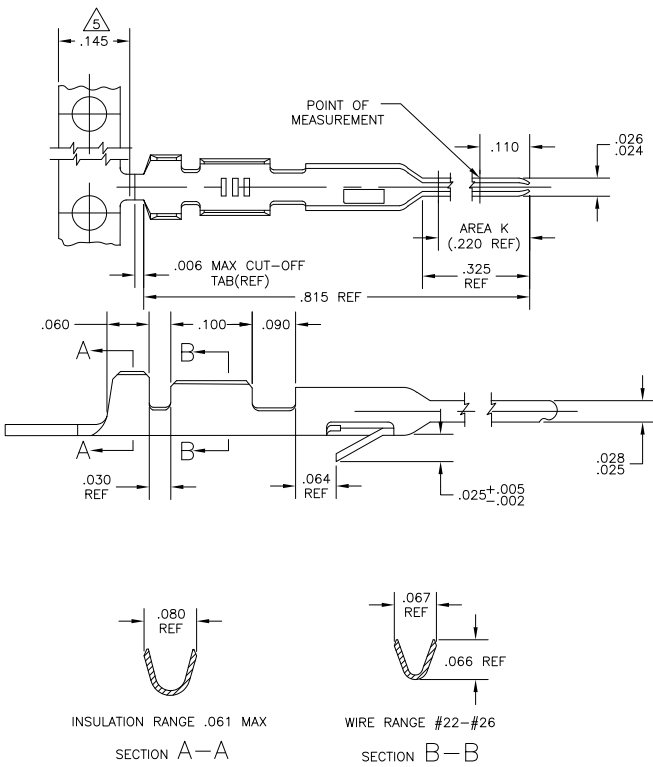
3

2

1

THIS DRAWING IS UNPUBLISHED. RELEASED FOR PUBLICATION. ALL RIGHTS RESERVED.

LOC	DIST	REVISIONS		
P	LTR	DESCRIPTION	DATE	BY
AD	00			
	D1	REVISED PER ECO-11-004917	11MAR11	RK HMR



- 1 .000015 ON AREA K, GOLD FLASH ON REMAINDER , OVER .000050 NICKEL.
- 2 .000030 GOLD ON AREA K, GOLD FLASH ON REMAINDER , OVER .000050 NICKEL.
- 3 .000100 TO .000200 BRIGHT TIN OVER .000030 MIN NICKEL ENTIRE CONTACT.
- 4. USE HAND TOOL 90340-1 FOR CRIMPING LOOSE PIECE CONTACTS.
- 5 GOLD PLATING NOT REQUIRED IN THIS AREA(GOLD PLATED PART ONLY).
- 6 .000100 TO .000200 MATTE TIN OVER .000030 MIN NICKEL ENTIRE CONTACT.

5-102107-3	6	5-102095-4
102107-3	3	102095-4
102107-2	2	102095-3
102107-1	1	102095-2
LOOSE PIECE PART NO.	FINISH	PART NO.

THIS DRAWING IS A CONTROLLED DOCUMENT.		DN	3-31-78
DIMENSIONS:		OK	4-10-78
INCHES		APVD	4-14-78
OTHER DIMENSIONS:		NAME	
OTHER DIMENSIONS:		PRODUCT SPEC	
OTHER DIMENSIONS:		APPLICATION SPEC	
OTHER DIMENSIONS:		WEIGHT	
OTHER DIMENSIONS:		SIZE	A2
OTHER DIMENSIONS:		CAGE CODE	00779
OTHER DIMENSIONS:		DRAWING NO	C=102095
OTHER DIMENSIONS:		RESTRICTED TO	
OTHER DIMENSIONS:		CUSTOMER DRAWING	
OTHER DIMENSIONS:		SCALE	10:1
OTHER DIMENSIONS:		SHEET	1 of 1
OTHER DIMENSIONS:		REV	D1

1471-9 (3/11)

102095

A