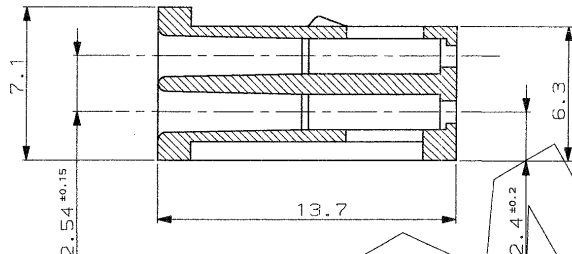
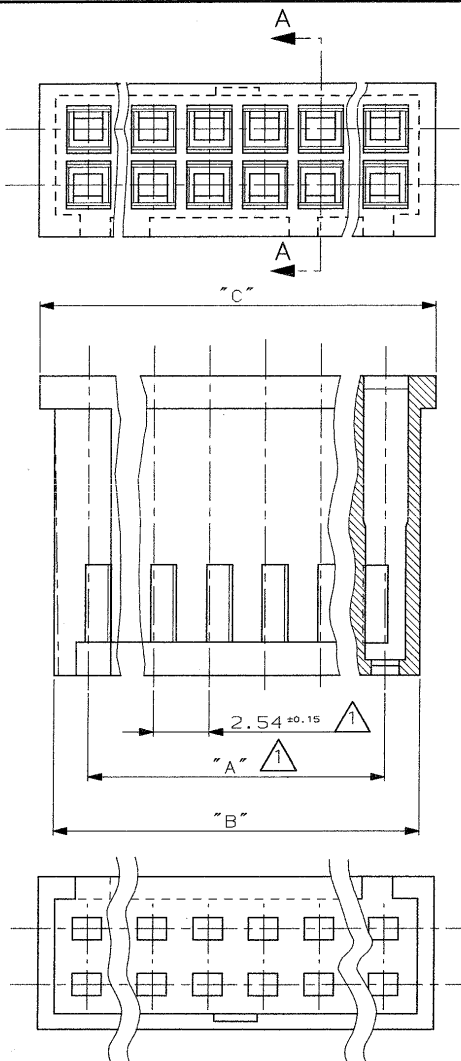


SECTION A-A

SCALA NON IMPESCATIVA
(DO NOT SCALE)
DIMENSIONI IN
DIMENSIONS IN

METRIC

PROIEZIONE AMERICANA
(THIRD ANGLE PROJECTION)



⚠ Tolleranza non cumulativa
(Non-cumulative tolerance)

Nr. Pos.	Part Number	Dim "A"	Dim "B"	Dim "C"
5	284123-1	10.16	13.2	14.7
22	280369	53.34	56.4	57.9
8	281018	43.18	46.2	47.8
15	280368	35.56	38.6	40.1
12	280515	27.94	31	32.5
9	280513	20.32	23.3	24.9
8	280366	17.78	20.8	22.3
6	282792-1	12.7	15.7	17.2
4	280365	7.62	10.6	12.2

CUSTOMER DRAWING FOR REFERENCE ONLY DISEGNO PER CLIENTE SOLO PER RIFERIMENTO

THIS DRAWING IS UNPUBLISHED RELEASE FOR PUBLICATION

TOLLERANZE, SE NON DIVERSAMENTE SPECIFICATO
(TOLERANCES, UNLESS OTHERWISE SPECIFIED)
± 0.3

MATERIALI (MATERIALS)
NORYL (UL94-V1)
Colore nero (Black colour)

ANGOLI (ANGLES) ± 2°

TE Connectivity

DIS. M. SCOMPARI 2 JAN 96

DESCRIZIONE (DESCRIPTION) AMPMODU Mod. II Rec.

CONT. R. CANTORE 2 JAN 96

H56, Double Row, Crimp Snap-in.

Z1 REVISED PER ECO-11-005301 RK

LOG. SIZE NUMERO (DRAW NO) I A3 C-280365

REV. FOGLIO (SHEET) Z1 1 OF 1

DISTRIBUZIONI (PRINT LIST.)