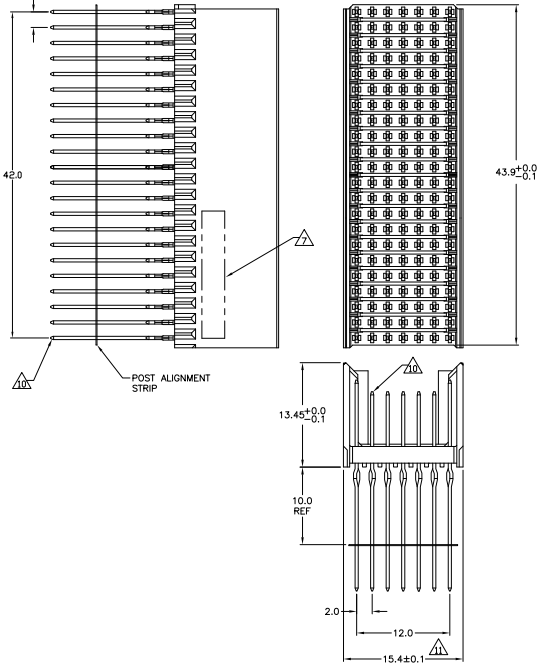
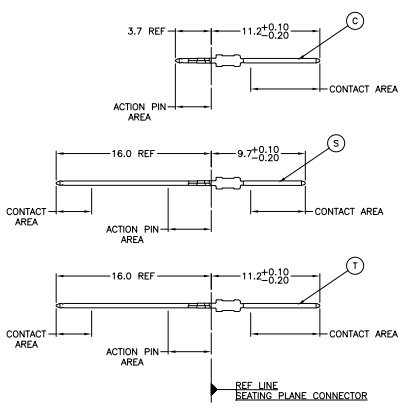


THIS DRAWING IS UNPUBLISHED. ALL RIGHTS RESERVED.
 © 2008 BY TYS ELECTRONICS CORPORATION. ALL RIGHTS RESERVED.

**CONNECTOR ASSEMBLY
 EXAMPLARY LOADED**



CONTACT DIMENSIONS
 SCALE 5:1

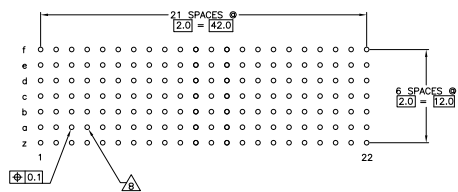


CONTACT LAYOUT

	z	a	b	c	d	e	f
1	T	S	S	S	S	S	T
2	T	S	S	S	S	S	T
3	T	S	S	S	S	S	T
4	T	S	S	S	S	S	T
5	T	S	S	S	S	S	T
6	T	S	S	S	S	S	T
7	T	S	S	S	S	S	T
8	T	S	S	S	S	S	T
9	T	S	S	S	S	S	T
10	T	S	S	S	S	S	T
11	C	S	S	S	S	S	C
12	C	S	S	S	S	S	C
13	T	S	S	S	S	S	T
14	T	S	S	S	S	S	T
15	T	S	S	S	S	S	T
16	T	S	S	S	S	S	T
17	T	S	S	S	S	S	T
18	T	S	S	S	S	S	T
19	T	S	S	S	S	S	T
20	T	S	S	S	S	S	T
21	T	S	S	S	S	S	T
22	T	S	S	S	S	S	T

RECOMMENDED PCB-HOLE LAYOUT
 COMPONENT SIDE SHOWN

PLATED THRU HOLES PARAMETERS
 REFERENCE APPLICATION SPECIFICATION



△△△△	1-6345112-9
△△△△	6345112-9
△△△△	6345112-4
△△△△	6345112-1
△△△△	PART NUMBER

THIS DRAWING IS A CONTROLLED DOCUMENT.

DESIGNED BY	DATE	REVISED BY	DATE
108-19029	114-19029	108-19082	114-19029

Customer Drawing: A100779, Part: 6345112, Title: 4.1, Sheet: 1 of 2.

THIS DRAWING IS UNPUBLISHED. ALL RIGHTS RESERVED.
 © 2005 TELCORDIA CORPORATION

REV	DATE	DESCRIPTION	BY	CHK	APP
AD	00	SEE SHEET 1			

- ⚠ MATERIAL:
CONTACT: PHOSPHOR BRONZE.
HOUSING: GLASS-FILLED POLYESTER.
- ⚠ GENERAL PLATING SPECIFICATION: UNDERPLATING
(ENTIRE CONTACT); 1.27µm MIN NICKEL AND ACTION
PIN: 0.5µm MIN TIN.
FOR PLATING OF MATING SURFACES SEE APPLICABLE
SPECIFICATION REFERENCE FOR EACH DASH NUMBER.
- ⚠ CONFORMS TO ALL TESTING ACCORDING TO IEC 61076-4-101
PERFORMANCE LEVEL 2.
- ⚠ CONFORMS TO ALL TESTING ACCORDING TO IEC 61076-4-101
PERFORMANCE LEVEL 1.
- ⚠ CONNECTOR TESTED AND QUALIFIED AGAINST TELCORDIA GR-1217-CORE QUALITY LEVEL 3,
CENTRAL OFFICE APPLICATIONS.
- ⚠ CONNECTOR TESTED AND QUALIFIED AGAINST TELCORDIA GR-1217-CORE QUALITY LEVEL 3,
UNCONTROLLED ENVIRONMENT APPLICATIONS.
- ⚠ CONNECTOR MARKED WITH PART NUMBER AND DATE CODE.
ADDITIONAL CHARACTERS OR MARKINGS, AS WELL AS THE LOCATION OF THE MARKINGS,
MAY BE ADDED FOR TRACEABILITY BASED UPON MANUFACTURERS DISCRETION.
- ⚠ PLATED-THROUGH HOLES AT 2x2mm SQUARE GRID
PATTERN DEFINED BY CONTACT LAYOUT.
- ⚠ FOR ACTUAL PIN LOADING SEE "CONTACT LAYOUT".
- ⚠ FOR ACTUAL PIN DIMENSIONS SEE "CONTACT DIMENSIONS".
- ⚠ TO BE MEASURED AT BOTTOM OF SHROUD.
- ⚠ CONNECTOR LUBRICATED WITH BELCORE APPROVED LUBRICANT,
TECHNICAL REFERENCE: TR-NWT-001217 ISSUE 1, SEP 1992.

THIS DRAWING IS A CONTROLLED DOCUMENT.		DESIGNED BY	DATE	Ytel Electronics Corporation Harrisburg, Pa 17105-3608	
DRAWN BY	DATE	DESIGNED BY	DATE	Ytel Electronics Corporation	
108-19082	108-19082	108-19082	108-19082	MALE ASSEMBLY, 2-PACK 2mm HM, TYPE B	
114-19029	114-19029	114-19029	114-19029	SIZE	DATE REE
SEE SHEET 1	SEE SHEET 1	SEE SHEET 1	SEE SHEET 1	A1	00779
CUSTOMER DRAWING		DRAWING NO		ISSUE	REV
		G=6345112		4.1	2