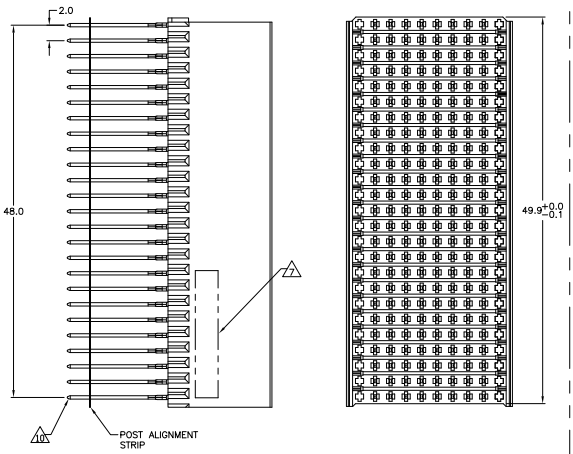


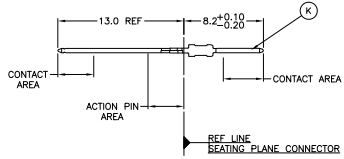
THIS DRAWING IS UNAPPROVED FOR PUBLICATION
 © COPRIGHT BY TYSO ELECTRONICS CORPORATION ALL RIGHTS RESERVED

REV	DATE	DESCRIPTION	BY	CHK	APP
E1	18JAN2009	REV PER ECR-10-000662	JY	SY	
F	10SEP10	ECR-10-018652	JS	MQW	

**CONNECTOR ASSEMBLY
 EXAMPLARY LOADED**



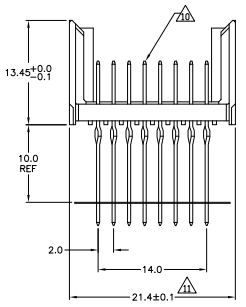
CONTACT DIMENSIONS
 SCALE 5:1



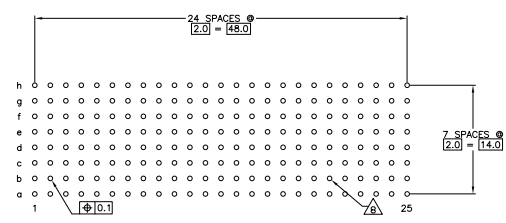
CONTACT LAYOUT

	z	a	b	c	d	e	f	g	h	i
1	K	K	K	K	K	K	K	K	K	K
2	K	K	K	K	K	K	K	K	K	K
3	K	K	K	K	K	K	K	K	K	K
4	K	K	K	K	K	K	K	K	K	K
5	K	K	K	K	K	K	K	K	K	K
6	K	K	K	K	K	K	K	K	K	K
7	K	K	K	K	K	K	K	K	K	K
8	K	K	K	K	K	K	K	K	K	K
9	K	K	K	K	K	K	K	K	K	K
10	K	K	K	K	K	K	K	K	K	K
11	K	K	K	K	K	K	K	K	K	K
12	K	K	K	K	K	K	K	K	K	K
13	K	K	K	K	K	K	K	K	K	K
14	K	K	K	K	K	K	K	K	K	K
15	K	K	K	K	K	K	K	K	K	K
16	K	K	K	K	K	K	K	K	K	K
17	K	K	K	K	K	K	K	K	K	K
18	K	K	K	K	K	K	K	K	K	K
19	K	K	K	K	K	K	K	K	K	K
20	K	K	K	K	K	K	K	K	K	K
21	K	K	K	K	K	K	K	K	K	K
22	K	K	K	K	K	K	K	K	K	K
23	K	K	K	K	K	K	K	K	K	K
24	K	K	K	K	K	K	K	K	K	K
25	K	K	K	K	K	K	K	K	K	K

**RECOMMENDED PCB-HOLE LAYOUT
 COMPONENT SIDE SHOWN**



PLATED THRU HOLES PARAMETERS
 REFERENCE APPLICATION SPECIFICATION



△△△△	3-646373-0
△△△△	1-646373-9
△△△△	646373-9
△△△△	646373-4
△△△△	646373-1
△△△△	PART NUMBER

THIS DRAWING IS A CONTROLLED DOCUMENT. THE ORIGINAL IS KEPT AT THE TYSO ELECTRONICS CORPORATION. THIS DRAWING IS THE PROPERTY OF TYSO ELECTRONICS CORPORATION. IT IS TO BE USED ONLY FOR THE PURPOSES SPECIFIED HEREIN. IT IS NOT TO BE REPRODUCED OR TRANSMITTED IN ANY FORM OR BY ANY MEANS, ELECTRONIC OR MECHANICAL, INCLUDING PHOTOCOPYING, RECORDING, OR BY ANY INFORMATION STORAGE AND RETRIEVAL SYSTEM, WITHOUT PERMISSION IN WRITING FROM TYSO ELECTRONICS CORPORATION.

DATE: 114-19029
 REV: 108-1622
 CUSTOMER DRAWING: A1007791G-646373

MALE ASSEMBLY, 2-PACK 2mm HM, TYPE E

DATE: 114-19029
 REV: 108-1622
 CUSTOMER DRAWING: A1007791G-646373

THIS DRAWING IS UNPUBLISHED. REVISIONS FOR INFORMATION. ALL RIGHTS RESERVED.
 © 2008 Tyco Electronics Corporation

REVISE		REVISIONS		
NO.	DATE	BY	DESCRIPTION	CHKD.
AD	00			
			SEE SHEET 1	

- △ MATERIAL:
CONTACT: PHOSPHOR BRONZE
HOUSING: GLASS-FILLED POLYESTER.
- △ GENERAL PLATING SPECIFICATION: UNDERPLATING
(ENTIRE CONTACT): 1.27µm MIN NICKEL AND ACTION
PIN: 0.5µm MIN TIN/LEAD.
FOR PLATING OF MATING SURFACES SEE APPLICABLE
SPECIFICATION REFERENCE FOR EACH DASH NUMBER.
- △ CONFORMS TO ALL TESTING ACCORDING TO IEC 61076-4-101
PERFORMANCE LEVEL 2.
- △ CONFORMS TO ALL TESTING ACCORDING TO IEC 61076-4-101
PERFORMANCE LEVEL 1.
- △ CONNECTOR TESTED AND QUALIFIED AGAINST TELCORDIA GR-1217-CORE QUALITY LEVEL 3,
CENTRAL OFFICE APPLICATIONS.
- △ CONNECTOR TESTED AND QUALIFIED AGAINST TELCORDIA GR-1217-CORE QUALITY LEVEL 3,
UNCONTROLLED ENVIRONMENT APPLICATIONS.
- △ CONNECTOR MARKED WITH PART NUMBER AND DATE CODE.
ADDITIONAL CHARACTERS OR MARKINGS, AS WELL AS THE LOCATION OF THE MARKINGS,
MAY BE ADDED FOR TRACEABILITY BASED UPON MANUFACTURERS DISCRETION.
- △ PLATED-THROUGH HOLES AT 2x2mm SQUARE GRID
PATTERN DEFINED BY CONTACT LAYOUT.
- △ FOR ACTUAL PIN LOADING SEE "CONTACT LAYOUT".
- △ FOR ACTUAL PIN DIMENSIONS SEE "CONTACT DIMENSIONS".
- △ TO BE MEASURED AT BOTTOM OF SHROUD.
- △ CONNECTOR LUBRICATED WITH BELCORE APPROVED LUBRICANT,
TECHNICAL REFERENCE: TR-NWT-001217 ISSUE 1, SEP 1992.
- △ 0.76µm MIN GOLD PLATING AT MATING SURFACES.

THIS DRAWING IS A CONTROLLED DOCUMENT.		DESIGNED BY: S. WELTMAN	DATE: 11/04/08	Tyco Electronics Corporation Harrisburg, Pa 17106-3608	
DRAWN BY: J. SKUPPER		DATE: 11/04/08	Tyco Electronics		
CHECKED BY: J. SKUPPER		DATE: 11/04/08	MALE ASSEMBLY, 2-PACK 2mm HM, TYPE E		
PART NO: 108-1622		REV: 114-19029		DATE: 11/04/08	DRAWN BY: J. SKUPPER
SEE SHEET 1		SEE SHEET 1		DATE: 11/04/08	DRAWN BY: J. SKUPPER
		CUSTOMER DRAWING		DATE: 11/04/08	DRAWN BY: J. SKUPPER