

4

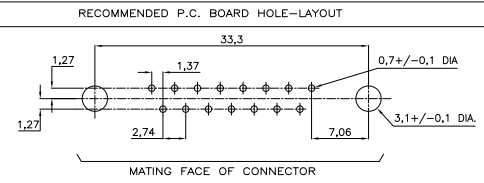
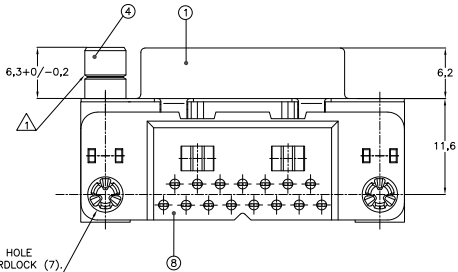
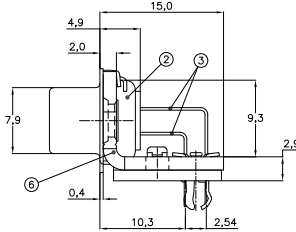
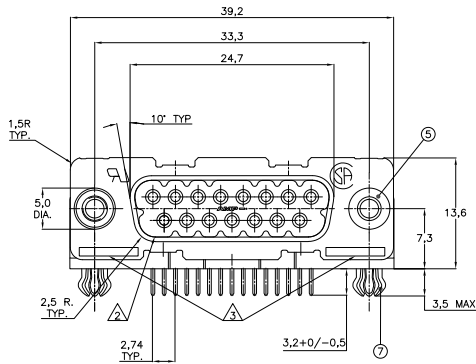
3

2

1

THIS DRAWING IS UNPUBLISHED. RELEASED FOR PUBLICATION. ALL RIGHTS RESERVED.

LOC	DIST	REVISONS		DATE	BY	APPD
F	LNK	DESCRIPTION				
J1		REVISED PER ECO-11-005294		02APR11	RK	HMR



ACCESSORIES PREFIX	ITEM NO.	DESCRIPTION OF ACCESSORY	2	2	2	2	2	2	2	2	2	2	2	2	2	2	2	2	2
5		BUSHING WITH THROUGH HOLE 3,1 DIA.																	
5		BUSHING WITH INNER THREAD 4-40 UNC																	
5		BUSHING WITH INNER THREAD M3																	
4		FEMALE SCREWLOCK WITH 4-40 UNC																	
4		FEMALE SCREWLOCK WITH M3																	
7		BOARDLOCK																	

HOW TO ORDER:
 15 POS.-----> Z-106506-Y
 PREFIX FOR ACCESSORIES }
 BASIC PARTNR. }
 SUFFIX FOR PLATING }

PLATING SUFFIX:
 GOLD OVER NICKEL AS PER PERFORMANCE LEVEL 2 (DIN 41652)
 SOLDERPART :2,5 μm TIN OVER NICKEL } -Y = -2

NOTES:
 △ GROOVE INDICATES VERSION WITH 4-40 UNC INNER THREAD; WITHOUT GROOVE INDICATES VERSION WITH M3 INNER THREAD.
 △ CAVITY IDENTIFICATION AT FRONT SIDE ONLY.
 △ PARTNUMBER AND DATE CODE.
 4. AIR AND CREEPAGE DISTANCES ACCORDING TO DIN 41652.

ITEM NRS./MATERIAL:
 ① SHELL : BRIGHT TINPLATED STEEL
 ② HOUSING : GLASSFILLED POLYESTER, COLOR : BLACK
 ③ CONTACTS : PHOSPHORBRONZE (PLATING : SEE TABLE ABOVE)
 ④ FEMALE SCREWLOCK : TINPLATED STEEL (INNER THREAD 4-40 UNC OR M3)
 ⑤ BUSHING : TINPLATED STEEL (INNER THREAD 4-40 UNC OR M3 OR 3,1 DIA THRU-HOLE)
 ⑥ BRACKET : TINPLATED STEEL
 ⑦ BOARDLOCK : TINPLATED PHOSPHORBRONZE
 ⑧ POST ALIGNMENTPLATE : GLASSFILLED NYLON, COLOR : BLACK

THIS DRAWING IS A CONTROLLED DOCUMENT. DWG. NO. D. KESSLER 14JAN99. DWG. CHK. W. SOOMERS. NAME: TE Connectivity. PRODUCT SPEC. APPLICATION SPEC. WEIGHT. MATERIAL: FINISH. SIZE: A2. CASE CODE: 00779. DRAWING NO.: C=106506. RESTRICTED TO: CUSTOMER DRAWING. SCALE: NTS. SHEET: 1 of 1. REV: J1.