

4

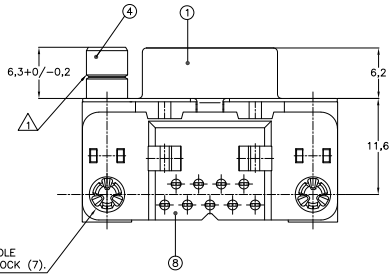
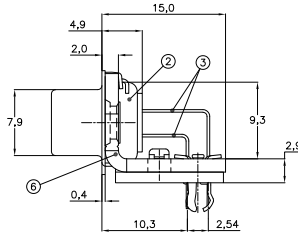
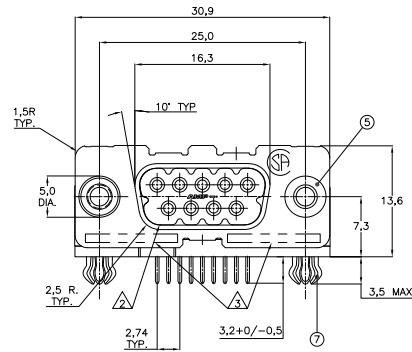
3

2

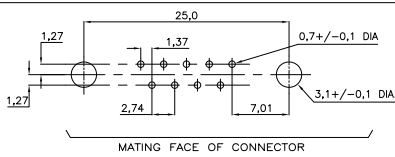
1

THIS DRAWING IS UNPUBLISHED. RELEASED FOR PUBLICATION. ALL RIGHTS RESERVED.

LOC	DIST	REVISIONS			
F	LNK	DESCRIPTION	DATE	OWN	APP
J1		REVISED PER ECO-11-005294	05APR11	RK	HMR



RECOMMENDED P.C. BOARD HOLE--LAYOUT



ACCESSORIES PREFIX	ITEM NO.	DESCRIPTION OF ACCESSORY	2	2	2	2	2	2	2
5		BUSHING WITH THROUGH HOLE 3,1 DIA.							
5		BUSHING WITH INNER THREAD 4-40 UNC							
5		BUSHING WITH INNER THREAD M3							
4		FEMALE SCREWLOCK WITH 4-40 UNC							
4		FEMALE SCREWLOCK WITH M3							
7		BOARDLOCK							

HOW TO ORDER:
 PREFIX FOR ACCESSORIES }
 BASIC PARTNR. }
 SUFFIX FOR PLATING }

9 POS.-----Z-106505-Y
 0-XXXXX-Y
 1-XXXXX-Y
 2-XXXXX-Y
 3-XXXXX-Y
 4-XXXXX-Y
 5-XXXXX-Y
 6-XXXXX-Y
 7-XXXXX-Y
 8-XXXXX-Y
 9-XXXXX-Y

PLATING SUFFIX }
 GOLD OVER NICKEL AS PER PERFORMANCE LEVEL 2 (DIN 41652)
 SOLDERPART :2,5 μm TIN OVER NICKEL } -Y = -2

NOTES :
 △ GROOVE INDICATES VERSION WITH 4-40 UNC INNER THREAD; WITHOUT GROOVE INDICATES VERSION WITH M3 INNER THREAD.
 △ CAVITY IDENTIFICATION AT FRONT SIDE ONLY.
 △ PARTNUMBER AND DATE CODE.
 4. AIR AND CREEPAGE DISTANCES ACCORDING TO DIN 41652.

ITEM NRS./MATERIAL :

- ① SHELL : BRIGHT TINPLATED STEEL
- ② HOUSING : GLASSFILLED POLYESTER, COLOR : BLACK
- ③ CONTACTS : PHOSPHORBRONZE (PLATING : SEE TABLE ABOVE)
- ④ FEMALE SCREWLOCK : TINPLATED STEEL (INNER THREAD 4-40 UNC OR M3)
- ⑤ BUSHING : TINPLATED STEEL (INNER THREAD 4-40 UNC OR M3 OR 3,1 DIA THRU-HOLE)
- ⑥ BRACKET : TINPLATED STEEL
- ⑦ BOARDLOCK : TINPLATED PHOSPHORBRONZE
- ⑧ POST ALIGNMENTPLATE : GLASSFILLED NYLON COLOR : BLACK

THIS DRAWING IS A CONTROLLED DOCUMENT.		DRN D. KESSLER 14JAN99	TE Connectivity	
DIMENSIONS: mm	TOLERANCES UNLESS OTHERWISE SPECIFIED	CHK W. SOOMERS	HD-20 SIZE 1 RIGHT ANGLE RECEPTACLE HEADER; MARK II+	
0 P.L.C. ±	1 P.L.C. ±	APPD	PRODUCT SPEC	RESTRICTED TO
2 P.L.C. ±	3 P.L.C. ±	APPLICATION SPEC	SIZE CASE CODE DRAWING NO	A2 00779 C=106505
4 P.L.C. ±	ANGLES ±	WEIGHT	CUSTOMER DRAWING	SCALE NTS SHEET 1 of 1 REV J1