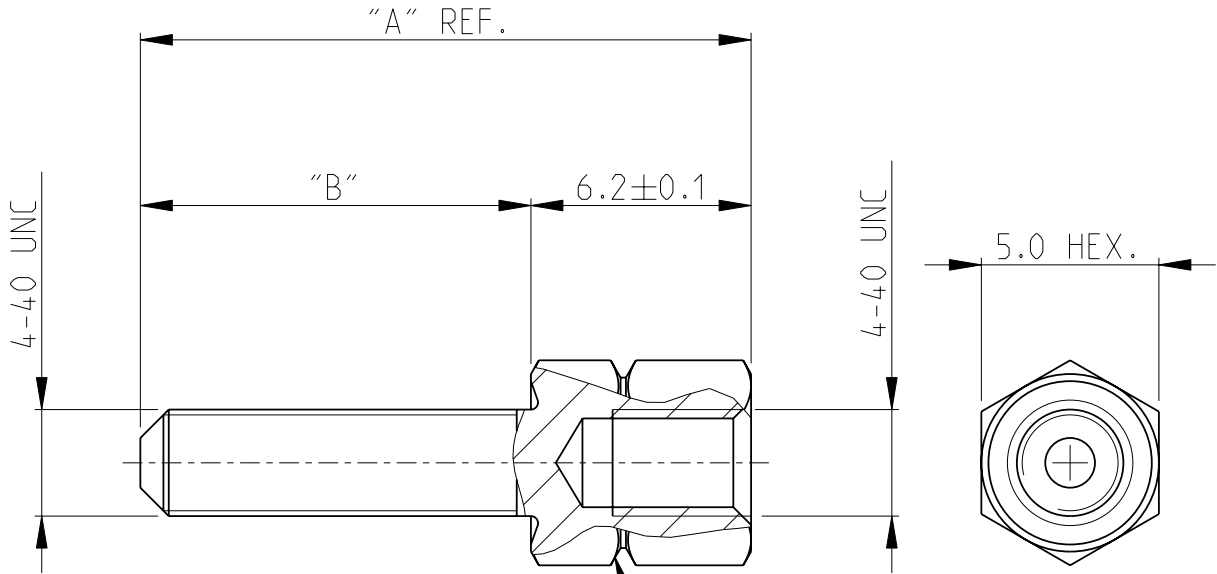


LOC	DIST	REVISIONS					
A1	-	P	LTR	DESCRIPTION	DATE	DWN	APVD
		F		H-9720	21APR92	SM	CVT
		G1		REDRAWN	6JUN05	ACK	MS
		G2		REVISED PER ECO-10-00045	12JAN10	KK	AEG
		J		ECR-11-005934	28MAR11	RK	KMA



NOTE

- 1 OBSOLETE PARTS: OBSOLETE CIS STERMLINING PER D.RENAUD/D.SINSI
2. MAXIMUM MOUNTING TORQUE 0.6 Nm.

9,2	3,0	PLAIN	ARCAP	3-828 102-3
9,2	3,0	TINPLATED	BRASS	3-828 102-1
17,2	11,0	PLAIN	ARCAP	2-828 102-3
17,2	11,0	TINPLATED	BRASS	2-828 102-1
15,9	9,7	PLAIN	ARCAP	1-828 102-3
15,9	9,7	TINPLATED	BRASS	1-828 102-1
11,2	5,0	PLAIN	ARCAP	828 102-3
11,2	5,0	TINPLATED	BRASS	828 102-1
DIM. "A"	DIM. "B"	FINISH	MATERIAL	PARTNUMBER

1 OBSOLETE

2005

RELEASED FOR PUBLICATION

TYCO ELECTRONICS CORPORATION ALL RIGHTS RESERVED.

THIS DRAWING IS UNCLASSIFIED

COPYRIGHT 2000

©

DIMENSIONS:

mm

TOLERANCES UNLESS OTHERWISE SPECIFIED:

0 PLC	±
1 PLC	±0.2
2 PLC	±0.2
3 PLC	±
4 PLC	±
ANGLES	±2°



DWN 06JUN2005

G.ACKERMANN

CHK 06JUN2005

M.SCHAARSCHMIDT

APVD 06JUN2005

G.FELDMEIER

PRODUCT SPEC

-

APPLICATION SPEC

-

WEIGHT

-

MATERIAL

-

FINISH

-



TE Connectivity

NAME

SCREWLOCK, FEMALE HD-SERIES
BEFESTIGUNGSSCHRAUBE, BUCHSENLEISTE

SIZE

A 4

CAGE CODE

00779

DRAWING NO

©=828102

RESTRICTED TO

-

CUSTOMER DRAWING

SCALE 5:1

SHEET 1 OF 1

REV J