

4

3

2

1

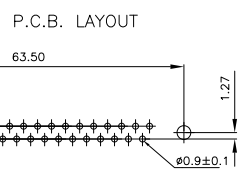
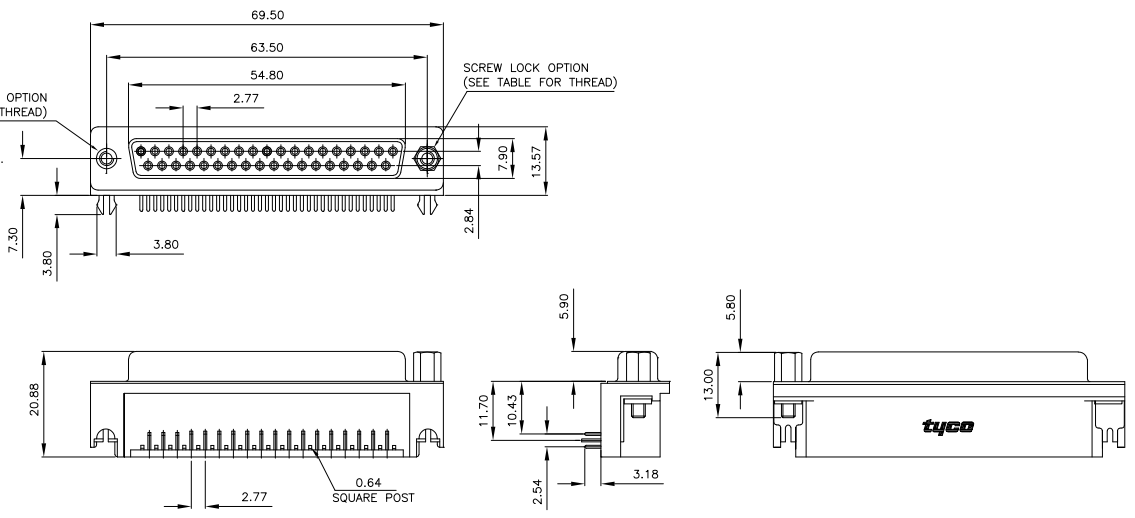
THIS DRAWING IS UNPUBLISHED. RELEASED FOR PUBLICATION OCT. 2003.  
 COPYRIGHT 2003 BY TYCO ELECTRONICS CORPORATION. ALL RIGHTS RESERVED.

LOC	DIST	REVISIONS			
P	LTR	DESCRIPTION	DATE	DWN	APVD
B		EBDO-0068-04	27JAN2004	JMS	FWK
B1		REVISED PER ECO-10-000444	18JAN10	KK	HMR

- NOTES:
- FOR LOCAL DATA REFER TO YOUR LOCAL TYCO ELECTRONICS SALES OFFICE.
  - ALL DIMENSIONS ARE NOMINAL FOR REFERENCE ONLY UNLESS OTHERWISE STATED.
  - MATERIAL :  
 HOUSING : THERMOPLASTIC, UL94V-0  
 BLACK COLOR  
 CONTACTS : PHOSPHOR BRONZE  
 SHELL : STEEL  
 BOARDLOCK : BRASS  
 SCREW : BRASS
  - FINISH :  
 CONTACT : 0.38µm MIN. GOLD PLATED ON CONTACT AREA  
 2.54µm MIN. TIN PLATED ON SOLDERTAILS  
 1.27µm MIN. NICKEL UNDERPLATED OVERALL  
 SHELL : 1.52µm MIN. TIN PLATED  
 BOARD LOCK : 1.52µm MIN. TIN PLATED  
 SCREW : 1.27µm MIN. NICKEL PLATED.

5. CHARACTERISTICS  
 CURRENT RATING : 5A  
 INSULATION RESISTANCE : 1000MOHMS MIN. 500VDC FOR 2MINS.  
 TEMPERATURE RATING : -55DEGC ~ +105DEGC  
 VOLTAGE RATING : 250VDC

6. OBSOLETE PARTS: OBSOLETE CIS STREAMLINING PER D.RENAUD/D.SINISI



6	OBSOLETE	37 WAY D SOCKET WITH BOARD LOCKS & 2 x M3 SCREW LOCKS, 0.38µm GOLD, RIGHT ANGLE	4-1634587-2
		37 WAY D SOCKET WITH BOARD LOCKS & 2 x 4-40 SCREW LOCKS, 0.38µm GOLD, RIGHT ANGLE	3-1634587-2
6	OBSOLETE	37 WAY D SOCKET WITH BOARD LOCKS & 2 x M3 INSERTS, 0.38µm GOLD, RIGHT ANGLE	2-1634587-2
		37 WAY D SOCKET WITH BOARD LOCKS & 2 x 4-40 INSERTS, 0.38µm GOLD, RIGHT ANGLE	1-1634587-2

THIS DRAWING IS A CONTROLLED DOCUMENT.		DWN	J.SANDWELL	15SEP2003	Tyco Electronics Corporation Stanmore, Middlesex, HA7 4RS	
DIMENSIONS: MM		CHK	S.EBBUTT	15SEP2003	NAME	
TOLERANCES UNLESS OTHERWISE SPECIFIED:		APVD	F.WHEELER-KING	15SEP2003	37 WAY D-SUB SOCKET WITH BOARD LOCK	
0 PLC ± .1		PRODUCT SPEC		SIZE		
1 PLC ± .1		APPLICATION SPEC		CAGE CODE		
2 PLC ± .1		WEIGHT		DRAWING NO		
3 PLC ± .1		SEE NOTE		RESTRICTED TO		
4 PLC ± .1		CUSTOMER DRAWING		A3 00779 C-1634587		
ANGLES ± .1		SCALE		SHEET		
FINISH		NTS		1 OF 2		
MATERIAL		REV		B1		

4

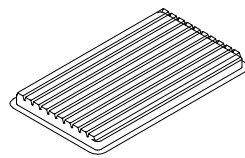
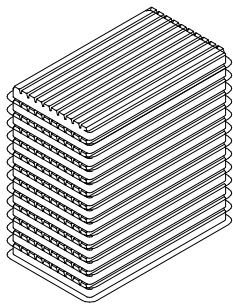
3

2

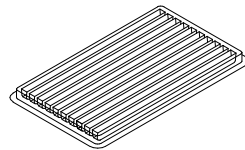
1

THIS DRAWING IS UNPUBLISHED. RELEASED FOR PUBLICATION OCT. 2003.  
 © COPYRIGHT 2003 BY TYCO ELECTRONICS CORPORATION. ALL RIGHTS RESERVED.

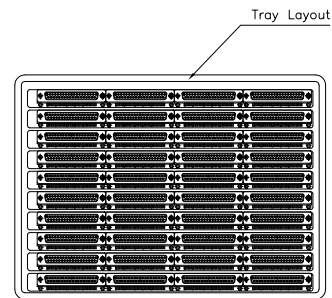
LOC		DIST		REVISIONS			
P	LTR	DESCRIPTION		DATE	DWN	APVD	
-		SEE SHEET 1		-	-	-	



COVER



TRAY



Tray Layout

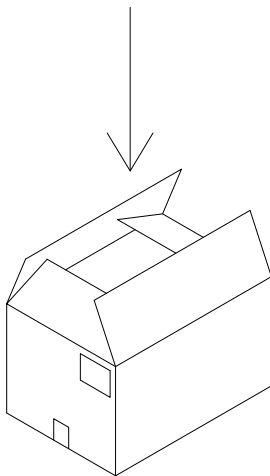
NOTES:

1. DIMENSION:

TRAY: L=310, W=220, H=23  
 SHIPPING BOX: L=335, W=230, H=320

2. QUANTITY:

40 PCS/TRAY  
 13 TRAY/SHIPPING BOX



THIS DRAWING IS A CONTROLLED DOCUMENT.		DWN J. SANDWELL 15SEP2003	Tyco Electronics Corporation Stanmore, Middlesex, HA7 4RS															
DIMENSIONS: MM		CHK S. EBUTT 15SEP2003	NAME 37 WAY D-SUB SOCKET WITH BOARD LOCK															
<table border="1"> <tr> <th colspan="2">TOLERANCES UNLESS OTHERWISE SPECIFIED:</th> </tr> <tr> <td>0. PLC</td> <td>± .1</td> </tr> <tr> <td>1. PLC</td> <td>± .1</td> </tr> <tr> <td>2. PLC</td> <td>± .1</td> </tr> <tr> <td>3. PLC</td> <td>± .1</td> </tr> <tr> <td>4. PLC</td> <td>± .1</td> </tr> <tr> <td>ANGLES</td> <td>± .1</td> </tr> </table>		TOLERANCES UNLESS OTHERWISE SPECIFIED:		0. PLC	± .1	1. PLC	± .1	2. PLC	± .1	3. PLC	± .1	4. PLC	± .1	ANGLES	± .1	APVD E. WHEELER-KING 15SEP2003	RESTRICTED TO	
TOLERANCES UNLESS OTHERWISE SPECIFIED:																		
0. PLC	± .1																	
1. PLC	± .1																	
2. PLC	± .1																	
3. PLC	± .1																	
4. PLC	± .1																	
ANGLES	± .1																	
MATERIAL	FINISH	WEIGHT SEE NOTE	SIZE A3	CAGE CODE 00779														
		CUSTOMER DRAWING	DRAWING NO 1634587	SCALE NTS														
			SHEET 2	OF 2														
			REV B1															