

4

3

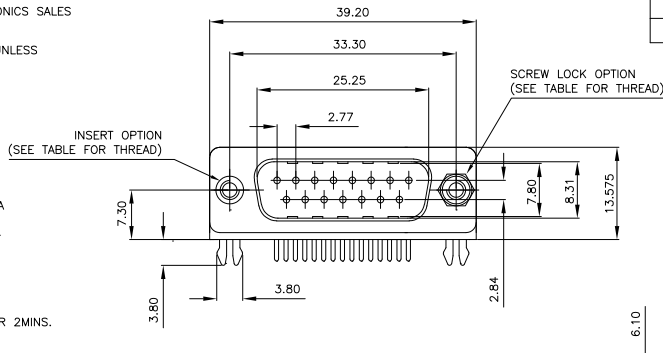
2

1

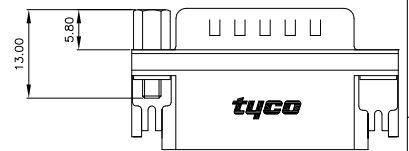
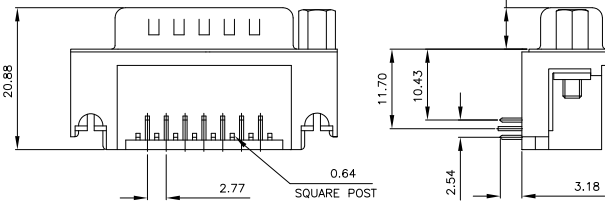
THIS DRAWING IS UNPUBLISHED. RELEASED FOR PUBLICATION OCT. 2003.  
 © COPYRIGHT 2003 BY TYCO ELECTRONICS CORPORATION. ALL RIGHTS RESERVED.

LOC	DIST	REVISIONS			
P	LTR	DESCRIPTION	DATE	DWN	APVD
B		EBDO-0068-04	27JAN2004	JMS	FWK
B1		REVISED PER ECO-09-024606	30OCT09	KK	AEG

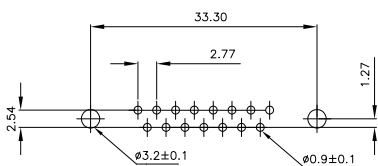
- NOTES:
- FOR LOCAL DATA REFER TO YOUR LOCAL TYCO ELECTRONICS SALES OFFICE.
  - ALL DIMENSIONS ARE NOMINAL FOR REFERENCE ONLY UNLESS OTHERWISE STATED.
  - MATERIAL : THERMOPLASTIC, UL94V-0  
 HOUSING : BLACK COLOR  
 CONTACTS : BRASS  
 SHELL : STEEL  
 BOARDLOCK : BRASS  
 SCREW : BRASS
  - FINISH : CONTACT : 0.38µm MIN. GOLD PLATED ON CONTACT AREA  
 2.54µm MIN. TIN PLATED ON SOLDERTAILS  
 1.27µm MIN. NICKEL UNDERPLATED OVERALL  
 SHELL : 1.52µm MIN. TIN PLATED  
 BOARD LOCK : 1.52µm MIN. TIN PLATED  
 SCREW : 1.27µm MIN. NICKEL PLATED.
  - CHARACTERISTICS  
 CURRENT RATING : 5A  
 INSULATION RESISTANCE : 1000MOHMS MIN. 500VDC FOR 2MINS.  
 TEMPERATURE RATING : -55DEGC ~ +105DEGC  
 VOLTAGE RATING : 250VDC



△ OBSOLETE PARTS: OBSOLETE CIS STREAMLINING PER D.RENAUD/D.SINISI



P.C.B. LAYOUT



△ OBSOLETE	15 WAY D PLUG WITH BOARD LOCKS & 2 x M3 SCREW LOCKS, 0.38µm GOLD, RIGHT ANGLE	4-1634581-2
	15 WAY D PLUG WITH BOARD LOCKS & 2 x 4-40 SCREW LOCKS, 0.38µm GOLD, RIGHT ANGLE	3-1634581-2
△ OBSOLETE	15 WAY D PLUG WITH BOARD LOCKS & 2 x M3 INSERTS, 0.38µm GOLD, RIGHT ANGLE	2-1634581-2
	15 WAY D PLUG WITH BOARD LOCKS & 2 x 4-40 INSERTS, 0.38µm GOLD, RIGHT ANGLE	1-1634581-2

THIS DRAWING IS A CONTROLLED DOCUMENT.		DWN	J.SANDWELL	15SEP2003	 Tyco Electronics Corporation Stanmore, Middlesex, HA7 4RS		
DIMENSIONS: MM		CHK	S.EBBUTT	15SEP2003			
TOLERANCES UNLESS OTHERWISE SPECIFIED:		APVD	F.WHEELER-KING	15SEP2003			
0 PLC ± - 1 PLC ± - 2 PLC ± - 3 PLC ± - 4 PLC ± - ANGLES ± -		NAME		15 WAY D-SUB PLUG WITH BOARD LOCK			
MATERIAL		WEIGHT		SIZE	CAGE CODE	DRAWING NO	RESTRICTED TO
SEE NOTE		-		A3	00779	1634581	-
CUSTOMER DRAWING				SCALE	NTS	SHEET	1 OF 2
				REV	B1		

4

3

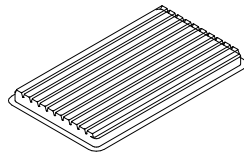
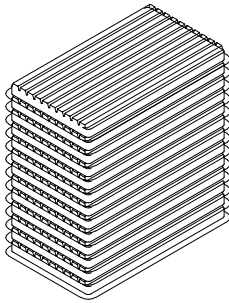
2

1

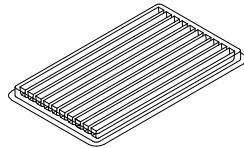
THIS DRAWING IS UNPUBLISHED. RELEASED FOR PUBLICATION OCT. 2003.  
 © COPYRIGHT 2003 BY TYCO ELECTRONICS CORPORATION. ALL RIGHTS RESERVED.

LOC		DIST		REVISIONS			
P	LTR	DESCRIPTION		DATE	DWN	APVD	
B		SEE SHEET 1		-	-	-	

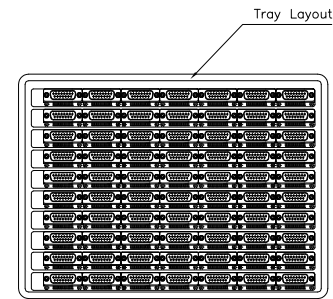
NOTES:  
 1. DIMENSION:  
 TRAY: L=310, W=220, H=23  
 SHIPPING BOX: L=335, W=230, H=320  
 2. QUANTITY:  
 70 PCS/TRAY  
 13 TRAY/SHIPPING BOX



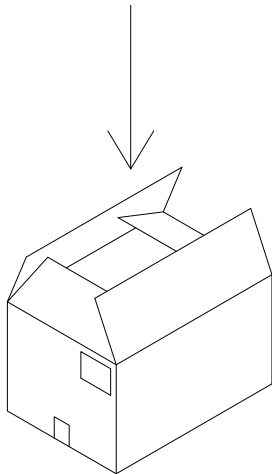
COVER



TRAY



Tray Layout



THIS DRAWING IS A CONTROLLED DOCUMENT.		DWN J. SANDWELL 15SEP2003	Tyco Electronics Corporation	
DIMENSIONS: MM		CHK S. EBUTT 15SEP2003	Stanmore, Middlesex, HA7 4RS	
TOLERANCES UNLESS OTHERWISE SPECIFIED: 0 PLC ± - 1 PLC ± - 2 PLC ± - 3 PLC ± - 4 PLC ± - ANGLES ± -		APVD E. WHEELER-KING 15SEP2003	NAME 15 WAY D-SUB PLUG WITH BOARD LOCK	
MATERIAL SEE NOTE		FINISH -	SIZE A3	RESTRICTED TO -
		PRODUCT SPEC -	CAGE CODE 00779	DRAWING NO 1634581
		APPLICATION SPEC -	DRAWING NO 1634581	
		WEIGHT -	SCALE NTS	
		CUSTOMER DRAWING		SHEET 2 OF 2 REV B1