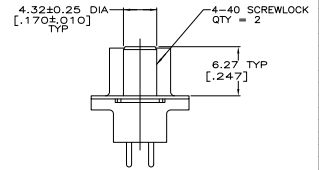
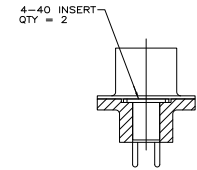
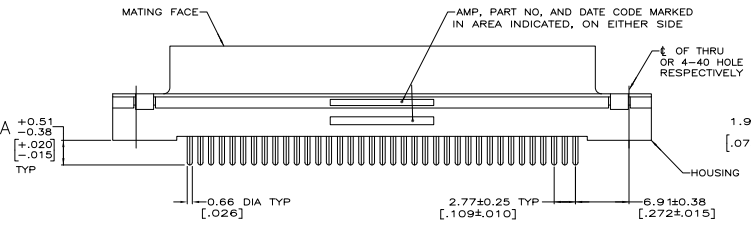
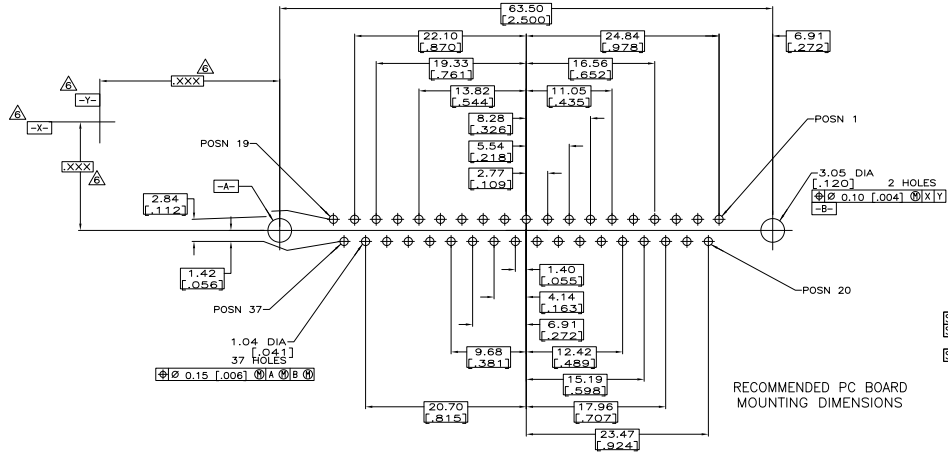


- △ HOUSING: BLACK POLYESTER, UL 94V-0 RATED; CONTACT: PHOSPHOR BRONZE
- △ SHELL: CARBON STEEL; SCREWLOCK: ZINC; INSERT: BRASS.
- △ NOTE DELETED.
- △ GOLD FLASH FOR A LENGTH OF 2.54[.100] MIN FROM MATING END, 2.54mm[.000100] MIN TIN OR TIN-LEAD FOR A LENGTH OF DIMENSION A FROM OPPOSITE END, BOTH OVER 1.27mm[.000050] MIN NICKEL.
- △ 0.76mm[.000030] MIN GOLD FOR A LENGTH OF 2.54[.100] MIN FROM MATING END, 2.54mm[.000100] MIN TIN OR TIN-LEAD FOR A LENGTH OF DIMENSION A FROM OPPOSITE END, BOTH OVER 1.27mm[.000050] MIN NICKEL.
- △ 5.08mm[.000200] MIN TIN OVER 2.54mm[.000100] MIN COPPER.
- △ DATUMS AND BASIC DIMENSIONS ESTABLISHED BY CUSTOMERS.
- △ 2.79[.110] MAX IN SHELL TAB CLINCH AREAS.



DETAIL D DETAIL E



| REVISION | DESCRIPTION | DATE | BY | APP |
|------------------------|---------------------------------------|------|----|------------|
| OBSOLETE | 6.35 [.250] 4-40 SCREWLOCK (DETAIL E) | | | 1-747301-8 |
| OBSOLETE | 6.35 [.250] 4-40 SCREWLOCK (DETAIL E) | | | 1-747301-7 |
| OBSOLETE | 4.32 [.170] 4-40 SCREWLOCK (DETAIL E) | | | 1-747301-6 |
| OBSOLETE | 4.32 [.170] 4-40 SCREWLOCK (DETAIL E) | | | 1-747301-5 |
| OBSOLETE | 3.18 [.125] 4-40 SCREWLOCK (DETAIL E) | | | 1-747301-4 |
| OBSOLETE | 3.18 [.125] 4-40 SCREWLOCK (DETAIL E) | | | 1-747301-3 |
| OBSOLETE | 6.35 [.250] 4-40 INSERT (DETAIL D) | | | 1-747301-2 |
| OBSOLETE | 6.35 [.250] 4-40 INSERT (DETAIL D) | | | 1-747301-1 |
| OBSOLETE | 4.32 [.170] 4-40 INSERT (DETAIL D) | | | 1-747301-0 |
| OBSOLETE | 4.32 [.170] 4-40 INSERT (DETAIL D) | | | 747301-9 |
| OBSOLETE | 3.18 [.125] 4-40 INSERT (DETAIL D) | | | 747301-8 |
| OBSOLETE | 3.18 [.125] 4-40 INSERT (DETAIL D) | | | 747301-7 |
| OBSOLETE | 6.35 [.250] - | | | 747301-6 |
| OBSOLETE | 6.35 [.250] - | | | 747301-5 |
| SUPERSEDED BY 747301-2 | 4.32 [.170] - | | | 747301-4 |
| SUPERSEDED BY 747301-4 | 4.32 [.170] - | | | 747301-3 |
| SUPERSEDED BY 747301-2 | 3.18 [.125] - | | | 747301-2 |
| SUPERSEDED BY 747301-2 | 3.18 [.125] - | | | 747301-1 |

| MOUNTING HARDWARE | | CONTACT FINISH | PART NUMBER |
|--|----------------|-----------------------|----------------|
| THIS DRAWING IS A CONTROLLED DOCUMENT. | REV. 12-14-88 | 114-40023 | 114-40023 |
| DESIGNED BY: 108-40025 | DATE: 11-14-88 | REVISED BY: 114-40023 | DATE: 11-14-88 |
| APPROVED BY: 114-40023 | DATE: 11-14-88 | REVISED BY: 114-40023 | DATE: 11-14-88 |
| REVISED BY: 114-40023 | DATE: 11-14-88 | REVISED BY: 114-40023 | DATE: 11-14-88 |
| REVISED BY: 114-40023 | DATE: 11-14-88 | REVISED BY: 114-40023 | DATE: 11-14-88 |