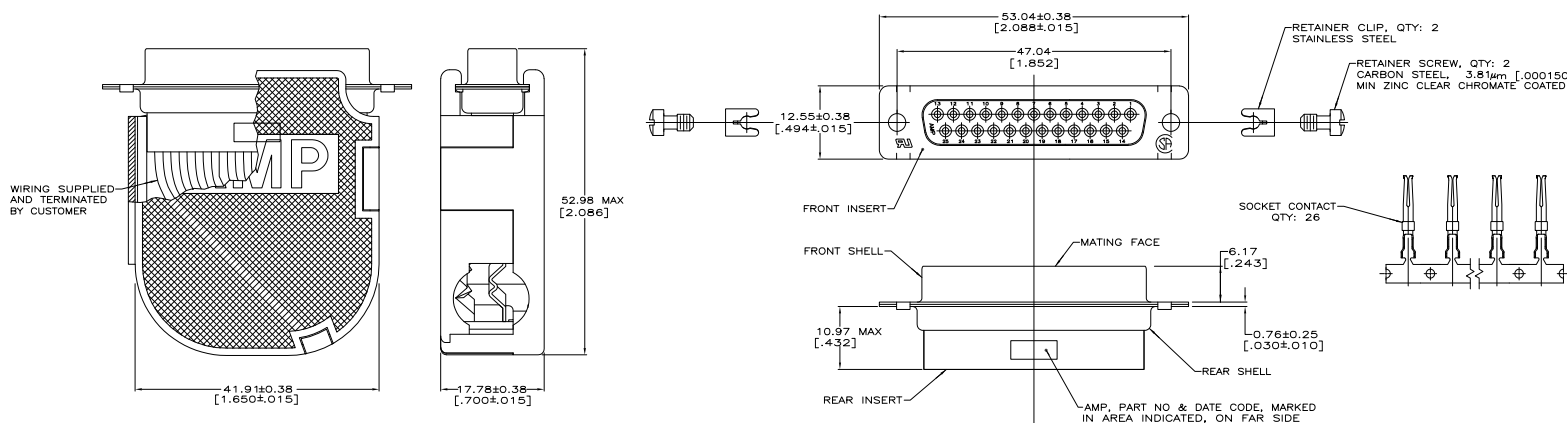
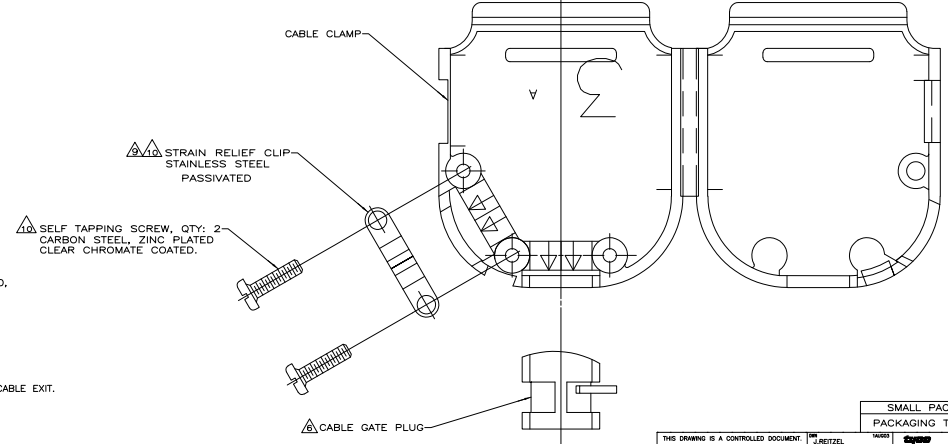


THIS DRAWING IS UNPUBLISHED  
 © 2008 BY TTI ELECTRONICS CORPORATION. ALL RIGHTS RESERVED.

REV	DATE	DESCRIPTION	BY	CHK	APP
00					
A		REVISED FOR ECO 0513-004-05			



- CONTACTS ACCEPT 20-24 AWG RANGE.
- INSERTS: NYLON, GLASS FILLED, UL 94V-0 RATED, BLACK.
- CABLE CLAMPS: POLYPROPYLENE, BLACK.
- CONTACTS: PHOSPHOR BRONZE.
- SHELLS: CARBON STEEL.
- CABLE GATE PLUG TO BE PLACED IN CABLE EXIT NOT BEING USED.
- CONTACTS: GOLD FLASH FOR A LENGTH OF 2.54[.100] MIN FROM MATING END, 2.54mm[.000100] MIN TIN ON OPPOSITE END FOR A LENGTH OF 4.06 [1.160] MIN FROM END OF INSULATION BARREL, BOTH OVER 0.76mm[.000030] MIN NICKEL ON ENTIRE CONTACT.
- SHELLS: 5.08mm[.000200] MIN TIN OVER 2.54mm[.000100] MIN COPPER.
- STRAIN RELIEF CLIP CAN BE REVERSED FOR PROPER INSTALLATION, DEPENDING ON SIZE OF CABLE DIAMETER.
- STRAIN RELIEF CLIP AND SELF TAPPING SCREWS MAY BE USED AT EITHER CABLE EXIT.
- CABLE DIAMETER RANGE = 4.58-11.68 [180-460].



THIS DRAWING IS A CONTROLLED DOCUMENT.		DATE	7/20/08	REVISION	00
DESIGNED BY	J. METZEL	DATE	7/20/08	REVISION	00
DRAWN BY	J. BOLASH	DATE	7/20/08	REVISION	00
CHECKED BY	M. MANSLEY	DATE	7/20/08	REVISION	00
APPROVED BY		DATE		REVISION	
PROJECT NO.	108-40005	REVISED DATE		DESCRIPTION	RECEPTACLE KIT, UNASSEMBLED, SIZE 3, 25 POSITION, AMPULITE, HSP-20
DATE	114-40030	SIZE	3.1	DRAWING NO.	000779 (G=749812-9)
ISSUED		SCALE	3:1	REV	1
CUSTOMER DRAWING					