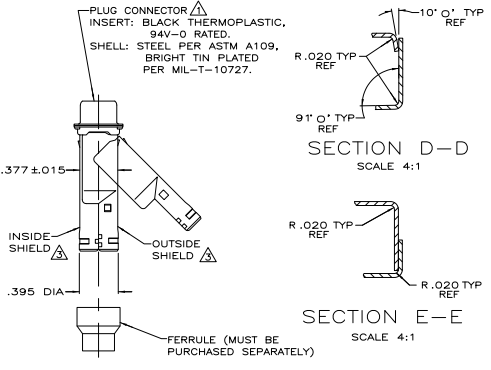
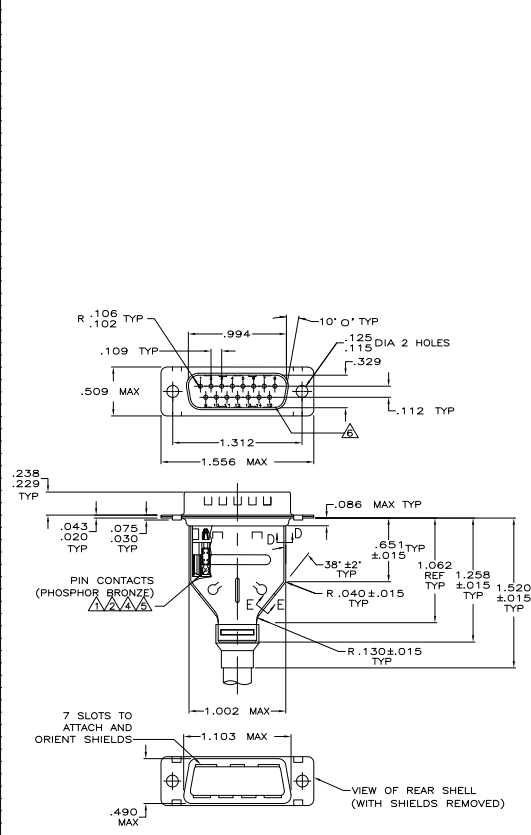


REV	DATE	DESCRIPTION	BY	APP
00				
1		REVISED FOR ECO-08-02886	JDF	CWR



- ⚠️ PLUG CONNECTOR FULLY LOADED WITH CONTACTS. ALL OTHER PARTS SHIPPED UNASSEMBLED (EACH PART INDIVIDUALLY BULK PACKED).
- ⚠️ NUMBER ON CONTACT INDICATES WIRE RANGE.
- ⚠️ SHIELDS: MATERIAL—.020 THICK STEEL, TIN PLATED.
- ⚠️ CONTACTS PLATED GOLD PLATED FOR LENGTH OF .150 MIN FROM MATING END, .00030 MIN GOLD IN MATED AREA, .000100-.000200 BRIGHT TIN OR BRIGHT IN TIN-LEAD IN WIRE TERMINATION AREA. .000050 NICKEL UNDERPLATE ON ENTIRE CONTACT.
- ⚠️ CONTACTS PLATED GOLD PLATED FOR LENGTH OF .150 MIN FROM MATING END, GOLD FLASH IN MATED AREA, .000100-.000200 BRIGHT TIN OR BRIGHT IN TIN-LEAD IN WIRE TERMINATION AREA. .000030 NICKEL UNDERPLATE ON ENTIRE CONTACT.
- ⚠️ RAISED CAVITY IDENTIFICATION AND AMP TRADEMARK.
- ⚠️ CONTACTS GOLD PLATED FOR A LENGTH OF .150 MIN FROM MATING END, .00030 MIN GOLD IN MATED AREA, .000100-.000200 MATTE TIN IN WIRE TERMINATION AREA, ALL OVER .000050 MIN NICKEL UNDERPLATE ON ENTIRE CONTACT.
- OR
- ⚠️ CONTACTS GOLD PLATED FOR A LENGTH OF .150 MIN FROM MATING END, GOLD FLASH OVER PALLADIUM-NICKEL, .000030 MIN TOTAL IN MATED AREA, .000100-.000200 MATTE TIN IN WIRE TERMINATION AREA, ALL OVER .000050 MIN NICKEL UNDERPLATE ON ENTIRE CONTACT.
- ⚠️ CONTACTS PLATED GOLD FLASH FOR A LENGTH OF .150 MIN FROM MATING END, .000100-.000200 MATTE TIN IN WIRE TERMINATION AREA, ALL OVER .000030 MIN NICKEL UNDERPLATE ON ENTIRE CONTACT.

⚠️	2	#22-26	747531-9
⚠️	2	#22-26	747531-8
⚠️	1	#26-30	747531-7
⚠️	3	#20-22	747531-6
OBSOLETE	2	#22-26	747531-5
OBSOLETE	1	#26-30	747531-4
OBSOLETE	3	#20-22	747531-3
OBSOLETE	2	#22-26	747531-2
OBSOLETE	1	#26-30	747531-1

THIS DRAWING IS A CONTROLLED DOCUMENT.

REV	DATE	DESCRIPTION	BY	APP
1	11-18-01	INITIALS	11-18-01	
2	11-18-01	SEBAGE	11-18-01	
3	11-18-01	WILMSLEY	11-18-01	
4	108-40011 # 108-40030			
5	114-40002			
6				
7				
8				
9				
10				

Kit, Plug, Shielding Hardware, Size 2, 15 Posn, HDE-20, ANILUMITE.

SEE CALL OUT

CUSTOMER DRAWING

DATE: 2-1

REV: 1

APP: H