

4

3

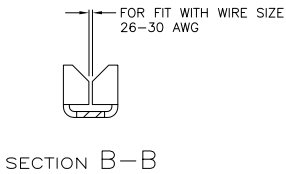
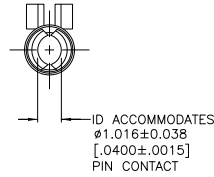
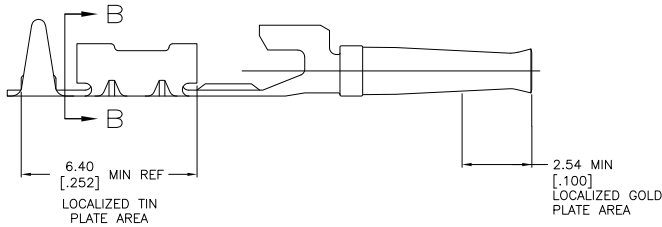
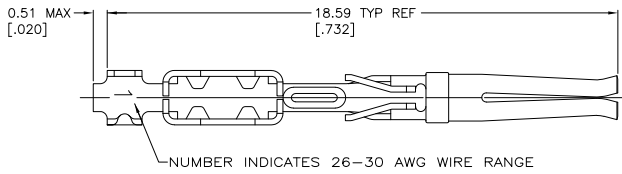
2

1

THIS DRAWING IS UNPUBLISHED. RELEASED FOR PUBLICATION. ALL RIGHTS RESERVED.

LOC	DIST	REVISIONS			
P	LTR	DESCRIPTION	DATE	MIN	APD
GP	00				
	K	REVISED PER ECO-11-006476	30MAR2011	CJV	CWR

- 1. GOLD PLATING PER MIL-G-45204, TIN PLATING PER MIL-T-10727, NICKEL PLATING PER QQ-N-290.
- 2. 0.76µm [.000030] MIN GOLD IN LOCALIZED GOLD PLATE AREA, 2.54µm [.000100] MIN BRIGHT TIN OR BRIGHT TIN-LEAD IN MIN LOCALIZED TIN PLATE AREA, ALL OVER 0.76µm [.000030] MIN NICKEL.
- 3. GOLD FLASH IN LOCALIZED GOLD PLATE AREA, 2.54µm [.000100] MIN BRIGHT TIN OR BRIGHT TIN-LEAD IN MIN LOCALIZED TIN PLATE AREA, ALL OVER 0.76µm [.000030] MIN NICKEL.
- 4. MAX INSULATION OD = .060.
- 5. 0.76µm [.000030] MIN GOLD IN LOCALIZED GOLD PLATE AREA, 2.54µm [.000100] MIN MATTE TIN IN MIN LOCALIZED TIN PLATE AREA, ALL OVER 0.76µm [.000030] MIN NICKEL.



OBSOLETE	△	745931-8
	△	745931-5
	△	745931-3
	FINISH	PART NUMBER

THIS DRAWING IS A CONTROLLED DOCUMENT.		DR. C. RICHARD 03/19/90	
DIMENSIONS: INCHES		DR. W. LENKER 3-22-90	
TOLERANCES UNLESS OTHERWISE SPECIFIED:		APPD	NAME
Ø	PLC	±	PRODUCT SPEC
1	PLC	±	APPLICATION SPEC
2	PLC	±	SIZE
3	PLC	±	CAGE CODE
4	PLC	±	DRAWING NO
ANGLES	±	WEIGHT	RESTRICTED TO
MATERIAL: PHOSPHOR BRONZE PER QQ-B-750		FINISH: △	SCALE: 10:1
		CUSTOMER DRAWING	SHEET 1 of 1
			REV K

**TE** TE Connectivity

CONTACT SOCKET, MASS TERMINATION, #26-30, HDE-20, AMPLIMITE