

4

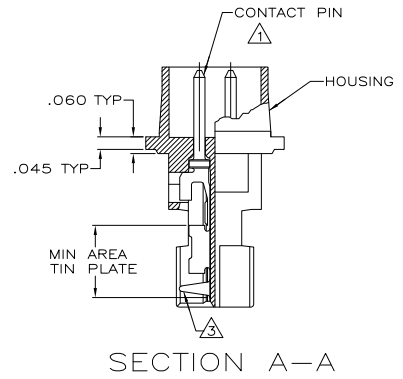
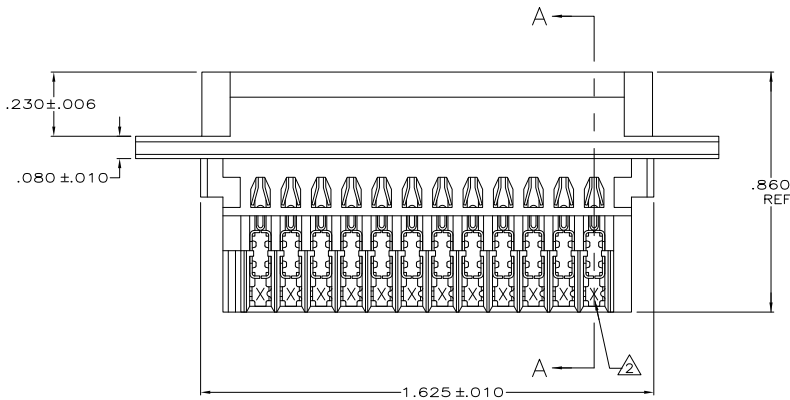
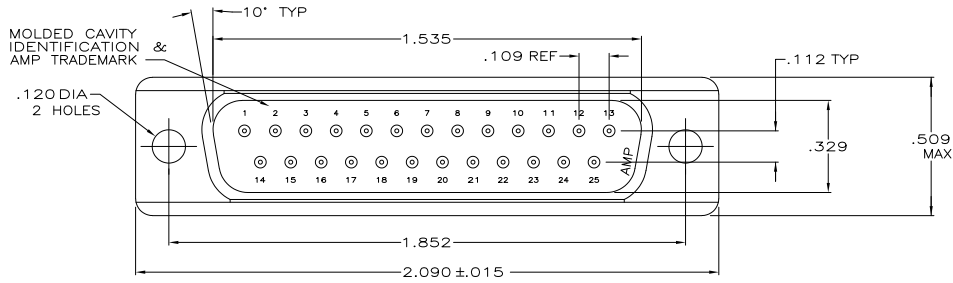
3

2

1

THIS DRAWING IS UNPUBLISHED. RELEASED FOR PUBLICATION
 © COPYRIGHT - By - ALL RIGHTS RESERVED.

LOC		DST		REVISIONS			
P	LTR	DESCRIPTION	DATE	BY	APPD		
GP	00						
	T1	REVISED PER ECO-11-004835	11MAR11	RK	HMR		



THIS DRAWING IS A CONTROLLED DOCUMENT.		DWG: L VARELA - DOCKS 11-15-04 CHK: J GERACE 11-15-04 APP: M. WALMSLEY 11-15-04 NAME: M. WALMSLEY PRODUCT SPEC: 108-40011 APPLICATION SPEC: 114-40002 HEIGHT: - CUSTOMER DRAWING	DWG: L VARELA - DOCKS 11-15-04 CHK: J GERACE 11-15-04 APP: M. WALMSLEY 11-15-04 NAME: M. WALMSLEY PRODUCT SPEC: 108-40011 APPLICATION SPEC: 114-40002 HEIGHT: - CUSTOMER DRAWING	TE TE Connectivity PLUG ASSEMBLY, SIZE 3, 25 POSITION, AMPLITE	SIZE: A2 CASE CODE: 00779 DRAWING NO: C=745211 SCALE: 4:1 SHEET: 1 of 2 REV: T1	RESTRICTED TO
DIMENSIONS:	DIMENSIONS: INCHES 0 DEC: 2 1 DEC: 2 2 DEC: 2 3 DEC: 2 4 DEC: 2 ANGLES: 2 FINISH: SEE TABLE	DIMENSIONS: INCHES 0 DEC: 2 1 DEC: 2 2 DEC: 2 3 DEC: 2 4 DEC: 2 ANGLES: 2 FINISH: SEE TABLE				

1471-9 (3/11)

745211

A

4

3

2

1

THIS DRAWING IS UNPUBLISHED. RELEASED FOR PUBLICATION
 © COPYRIGHT - By - ALL RIGHTS RESERVED.

LOC	DIST	REVISIONS					
GP	00	P	LTR	DESCRIPTION	DATE	OWN	APPD
-	-	-	-	SEE SHEET 1	-	-	-

- ⚠ HOUSING FULLY LOADED WITH CONTACTS.
- ⚠ NUMBER ON CONTACT INDICATES WIRE RANGE.
- ⚠ CONTACT INSULATION RANGE: .060 MAXIMUM O.D.
- ⚠ CONTACTS GOLD PLATED FOR A LENGTH OF .150 MIN FROM MATING END, .000030 MIN GOLD IN MATED AREA, .000100-.000200 BRIGHT TIN OR BRIGHT TIN-LEAD IN AREA SHOWN, ALL OVER .000050 MIN NICKEL UNDERPLATE ON ENTIRE CONTACT.
OR
CONTACTS GOLD PLATED FOR A LENGTH OF .150 MIN FROM MATING END, GOLD FLASH OVER .000030 MIN PALLADIUM-NICKEL IN MATED AREA, .000100-.000200 BRIGHT TIN OR BRIGHT TIN-LEAD IN AREA SHOWN, ALL OVER .000050 MIN NICKEL UNDERPLATE ON ENTIRE CONTACT.
- ⚠ CONTACTS PLATED GOLD PLATED FOR LENGTH OF .150 MIN FROM MATING END, GOLD FLASH IN MATED AREA .000100-.000200 BRIGHT TIN IN TIN-LEAD AREA SHOWN. .000030 NICKEL UNDERPLATE ON ENTIRE CONTACT.
- ⚠ CONTACTS GOLD PLATED FOR A LENGTH OF .150 MIN FROM MATING END, .000030 MIN GOLD IN MATED AREA, .000100-.000200 MATTE TIN IN AREA SHOWN, ALL OVER .000050 MIN NICKEL UNDERPLATE ON ENTIRE CONTACT.
OR
CONTACTS GOLD PLATED FOR A LENGTH OF .150 MIN FROM MATING END, GOLD FLASH OVER PALLADIUM-NICKEL, .000030 MIN TOTAL IN MATED AREA, .000100-.000200 MATTE TIN IN AREA SHOWN, ALL OVER .000050 MIN NICKEL UNDERPLATE ON ENTIRE CONTACT.
- ⚠ CONTACTS PLATED GOLD FLASH FOR A LENGTH OF .150 MIN FROM MATING END, .000100-.000200 MATTE TIN IN AREA SHOWN, ALL OVER .000030 MIN NICKEL UNDERPLATE ON ENTIRE CONTACT.
- ⚠ HOUSING: BLACK THERMOPLASTIC 94V-0 RATED.
CONTACTS: PHOSPHOR BRONZE.

OBSOLETE	⚠	3	#20-22	1-745211-0
	⚠	1	#26-30	745211-9
	⚠	2	#22-26	745211-8
	⚠	2	#22-26	745211-7
		3	#20-22	745211-6
OBSOLETE	⚠	2	#22-26	745211-5
OBSOLETE		1	#26-30	745211-4
OBSOLETE	⚠	3	#20-22	745211-3
OBSOLETE		2	#22-26	745211-2
OBSOLETE		1	#26-30	745211-1
	FINISH	⚠	AWG WIRE RANGE	PART NUMBER

THIS DRAWING IS A CONTROLLED DOCUMENT.

INCHES	0 PLG ± .005	1 PLG ± .005	2 PLG ± .005	3 PLG ± .005	4 PLG ± .005	ANGLES ± .5°	FINISH	SEE TABLE
MATERIAL	⚠							

DESIGNED BY	L. VARELA - DOCKS	DATE	11-18-04
CHKD BY	J. GERACE	DATE	11-18-04
APPD BY	M. WALMSLEY	DATE	11-18-04
PRODUCT SPEC	108-40011	APPLICATION SPEC	114-40002
WEIGHT	-	SIZE	A2
CAGE CODE	00779	DRAWING NO	C=745211
CUSTOMER DRAWING		SCALE	4:1
		SHEET	2 of 2
		REV	T1

TE Connectivity
 PLUG ASSEMBLY, SIZE 3, 25 POSITION, AMPLITE