

4

3

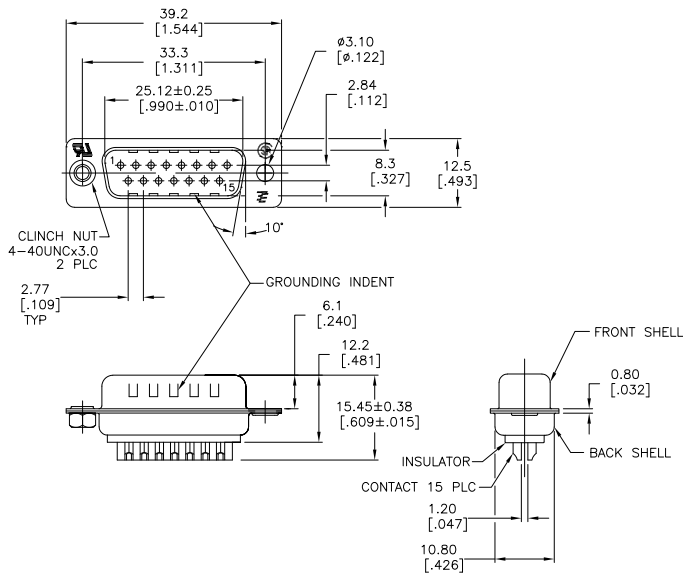
2

1

THIS DRAWING IS UNPUBLISHED. RELEASED FOR PUBLICATION.
 © COPYRIGHT - By - ALL RIGHTS RESERVED.

LOC	DIST	REVISIONS			
F	LNK	DESCRIPTION	DATE	BY	APPD
BD	00				
	V3	REVISED PER ECO-11-004587	11MAR11	RK	HMR

- 1 MATERIAL:
 FRONT INSULATOR: PBT, 30 %GF, UL94V-0, BLACK COLOR
 BACK INSULATOR: PBT, 30 %GF, UL94V-0, BLACK COLOR
 CONTACT: BRASS
 FRONT SHELL: STEEL
 BACK SHELL: STEEL
 CLINCH NUTS: BRASS
- 2 FINISH:
 CONTACT: GOLD PLATING 0.00002[.0000008] MIN ON CONTACT AREA 0.00229
 [.000090] MIN TIN-LEAD PLATING ALL OVER 0.00127[.000050] MIN NICKEL
- 3 CONTACT: GOLD PLATING 0.00076[.000030] MIN ON CONTACT AREA 0.00229
 [.000090] MIN TIN-LEAD PLATING ALL OVER 0.00127[.000050] MIN NICKEL
- 4 SHELL: TIN 0.0241[.000095] MIN FULL SHELL
- 5 SHELL: BLUE ZINC: 0.00508[.000200] - 0.00762[.000300] OVER ENTIRE SHELL
- 6 CONTACT: GOLD PLATING 0.00002[.0000008] MIN ON CONTACT AREA 0.00229
 [.000090] MIN TIN-COPPER PLATING ALL OVER 0.00127[.000050] MIN NICKEL
- 7 CLINCH NUTS: NICKEL PLATING .00305-.00508[.000120-.000200]
- 8 SPECIFICATION
 ELECTRICAL CHARACTERISTICS: CURRENT RATING: 3 AMPERES
 DIELECTRIC WITHSTANDING VOLTAGE: AC 1000V r.m.s
 INSULATION RESISTANCE: 5000 MEGOHMS MINIMUM AT DC 500V
 CONTACT RESISTANCE: 10 MILLIOHMS MAXIMUM.
- 9 ROHS 2002/95/EC COMPLIANT
- 10 PLUG ASSEMBLY MATES WITH ANY 15 POSITION RECEPTACLE IN AMPLIMITE SERIES
- 11 SOLDER CUP WILL ACCOMMODATE 20 MAX AWG WIRE.
- 12 CONTACT: GOLD PLATING 0.00076[.000030] MIN ON CONTACT AREA
 0.00229[.000090] MIN TIN-COPPER ALL OVER 0.00127[.000050]
 MIN NICKEL PLATING
- 13 OBSOLETE PARTS: OBSOLETE CIS STREAMLINING PER D.RENAUD/D.SINIS



STANDARD	NO	NO	NO	NO	NO	NO	NO
OBSOLETE	STANDARD	YES	YES	YES	YES	YES	YES
STANDARD	NO	YES	YES	YES	YES	YES	YES
STANDARD	NO	YES	YES	YES	YES	YES	YES
STANDARD	NO	YES	YES	YES	YES	YES	YES
SUPERSEDED TO 5-747908-8	STANDARD	YES	YES	YES	YES	YES	YES
SUPERSEDED TO 5-747908-5	STANDARD	NO	YES	YES	YES	YES	YES
SUPERSEDED TO 5-747908-4	STANDARD	NO	NO	NO	NO	NO	NO
SUPERSEDED TO 5-747908-2	STANDARD	NO	YES	YES	YES	YES	YES
	PACKAGING TYPE	CLINCH NUTS	GROUNDING INDENTS	CONTACTS	SHELLS	PART NO.	

THIS DRAWING IS A CONTROLLED DOCUMENT. DWG: M. BINDER 03MAR03
 CHK: R. BENDORF 03MAR03
 DATE: 03MAR03
 NAME: R. BENDORF
 PRODUCT SPEC: PLUG ASSEMBLY, SOLDER CUP, SIZE 2, 15 POSN, HD-20, AMPLIMITE

DIMENSIONS	TOLERANCES UNLESS OTHERWISE SPECIFIED	APPROVALS	SIZE	DATE	DRAWING NO.	RESTRICTED TO
mm [INCHES]	0 PLC ± .05 1 PLC ± 0.25 2 PLC ± 0.15 3 PLC ± 0.05 4 PLC ± .05 ANGLES ± .5°	APPLICATOR: [Signature]	A2	00779	C=747908	-
MATERIAL	FINISH	WEIGHT				
	SEE TABLE					

CUSTOMER DRAWING SCALE: 2:1 SHEET: 1 of 1 REV: V3

1471-9 (3/11)

747908

A