

4

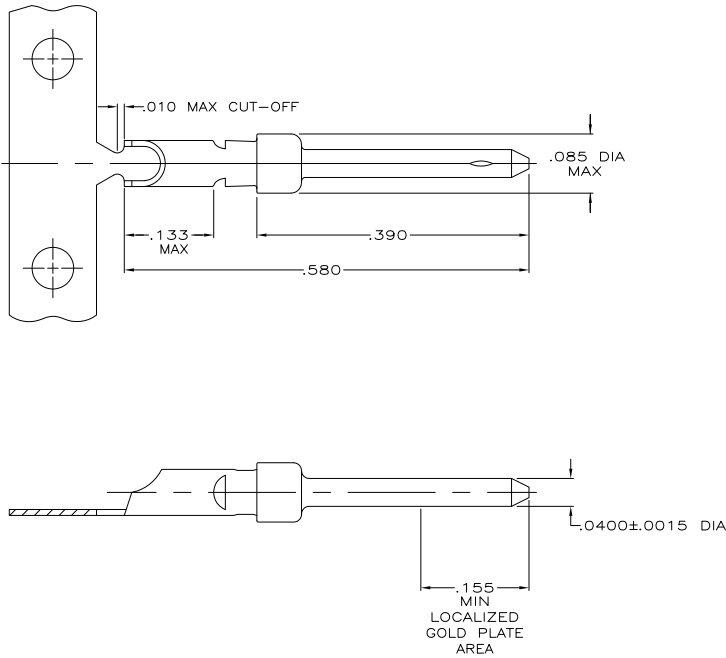
3

2

1

THIS DRAWING IS UNPUBLISHED. RELEASED FOR PUBLICATION. ALL RIGHTS RESERVED.

LOC		DIBT		REVISIONS			
P	LR	DESCRIPTION	DATE	BY	APPD		
GP	00						
	R1	REVISED PER ECO-11-004835	11MAR11	RK	HMR		



1. GOLD PLATING MAY NOT APPEAR ON CARRIER STRIP.
2. GOLD PLATING PER MIL-G-45204.  
NICKEL PLATING PER QQ-N-290.  
TIN PLATING PER MIL-T-10727.
3. GOLD PLATED IN LOCALIZED GOLD PLATE AREA AS FOLLOWS:  
.000030 MIN GOLD IN MATED AREA, GOLD FLASH ON REMAINDER OF CONTACT, ALL OVER .000050 MIN NICKEL UNDERPLATE.  
OR  
GOLD FLASH OVER PALLADIUM-NICKEL PLATE, .000030 MIN TOTAL IN MATED AREA, GOLD FLASH ON REMAINDER OF CONTACT, ALL OVER .000050 MIN NICKEL UNDERPLATE.
4. GOLD PLATED IN LOCALIZED GOLD PLATED AREA, GOLD FLASH IN MATED AREA, TIN PLATED WIRE BARREL, OVER .000030 NICKEL.
5. GOLD PLATED IN LOCALIZED GOLD PLATED AREA, .000030 GOLD IN MATED AREA, TIN PLATED WIRE BARREL, OVER .000030 NICKEL.
6. .046 MAX DIA CONDUCTOR (UP TO 18 AWG).

	SMALL PACK	△	LOOSE PIECE	66570-8
OBSOLETE	STANDARD	△	STRIP	66570-6
OBSOLETE	STANDARD	△	STRIP	66570-4
	STANDARD	△	LOOSE PIECE	66570-3
	STANDARD	△	STRIP	66570-2
	PACKAGING TYPE		FINISH	TYPE
				PART NUMBER

THIS DRAWING IS A CONTROLLED DOCUMENT.		DR	9-9-06	TE Connectivity			
DIMENSIONS:		S. WELDON	9-9-06	 PIN CONTACT, SIZE 20 DF, WITH SOLDER CUP, AMPLIMITE			
INCHES		OK	C. RICHARD				
OTHER DIMENSIONS:		NAME					
OTHER DIMENSIONS:		PRODUCT SPEC					
MATERIAL		APPLICATION SPEC		SIZE	CAGE CODE	DRAWING NO	RESTRICTED TO
BRASS PER MIL-C-50		FINISH	SEE TABLE	A2	00779	C-66570	
		WEIGHT		CUSTOMER DRAWING		SCALE	10:1
		ANGLES				SHEET	1 of 1
						REV	R1

1471-9 (3/11)

66570

B

A