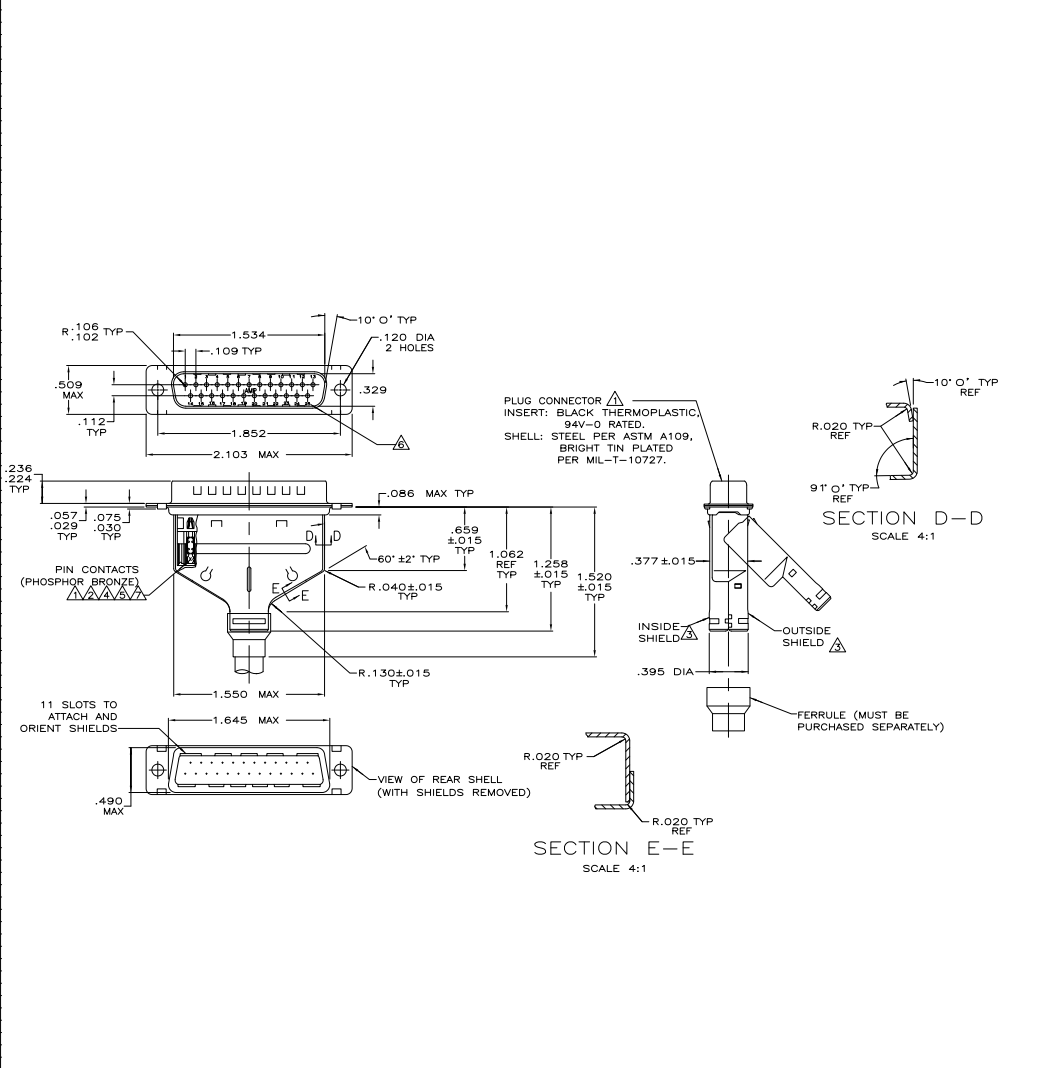


REV	DATE	DESCRIPTION	BY	CHK
00				
M1		REVISED PER EDD-11-004835	11MM11	RK HMR



- ⚠️ PLUG CONNECTOR FULLY LOADED WITH CONTACTS. ALL OTHER PARTS SHIPPED UNASSEMBLED (EACH PART INDIVIDUALLY BULK PACKED).
- ⚠️ NUMBER ON CONTACT INDICATES WIRE RANGE.
- ⚠️ SHIELDS: MATERIAL—.020 THICK STEEL, TIN PLATED.
- ⚠️ CONTACTS PLATED GOLD PLATED FOR LENGTH OF .150 MIN FROM MATING END, .00030 MIN GOLD IN MATED AREA, .000100—.000200 BRIGHT TIN OR BRIGHT IN TIN-LEAD IN WIRE TERMINATION AREA, .000050 NICKEL UNDERPLATE ON ENTIRE CONTACT.
- ⚠️ CONTACTS PLATED GOLD PLATED FOR LENGTH OF .150 MIN FROM MATING END, GOLD FLASH IN MATED AREA, .000100—.000200 BRIGHT TIN OR BRIGHT IN TIN-LEAD IN WIRE TERMINATION AREA, .000030 NICKEL UNDERPLATE ON ENTIRE CONTACT.
- ⚠️ RAISED CAVITY IDENTIFICATION AND AMP TRADEMARK.
- ⚠️ CONTACTS PLATED GOLD PLATED FOR LENGTH OF .150 MIN FROM MATING END, .000050 MIN GOLD IN MATED AREA, .000100—.000200 BRIGHT TIN OR BRIGHT IN TIN-LEAD IN WIRE TERMINATION AREA, .000050 NICKEL UNDERPLATE ON ENTIRE CONTACT.
- ⚠️ CONTACTS GOLD PLATED FOR A LENGTH OF .150 MIN FROM MATING END, .000030 MIN GOLD IN MATED AREA, .000100—.000200 MATTE TIN IN WIRE TERMINATION AREA, ALL OVER .000050MIN NICKEL UNDERPLATE ON ENTIRE CONTACT.
- OR
- ⚠️ CONTACTS GOLD PLATED FOR A LENGTH OF .150 MIN FROM MATING END, GOLD FLASH OVER PALLADIUM-NICKEL, .000030 MIN TOTAL IN MATED AREA, .000100—.000200 MATTE TIN IN WIRE TERMINATION AREA, ALL OVER .000050 MIN NICKEL UNDERPLATE ON ENTIRE CONTACT.
- ⚠️ CONTACTS PLATED GOLD FLASH FOR A LENGTH OF .150 MIN FROM MATING END, .000100—.000200 MATTE TIN IN WIRE TERMINATION AREA, ALL OVER .000030 MIN NICKEL UNDERPLATE ON ENTIRE CONTACT.

⚠️	2	#22-26	1-747547-0
⚠️	2	#22-26	747547-9
⚠️	1	#26-30	747547-8
⚠️	2	#22-26	747547-7
OBsolete	3	#20-22	747547-6
OBsolete	2	#22-26	747547-5
OBsolete	1	#26-30	747547-4
OBsolete	3	#20-22	747547-3
OBsolete	2	#22-26	747547-2
OBsolete	1	#26-30	747547-1

THIS DRAWING IS A CONTROLLED DOCUMENT.

DATE: 11/18/81
 BY: GEORGE
 CHECKED BY: WILMSLEY
 DATE: 11/18/81
 PART NO: 108-4001 # 108-4000
 REV: 1
 DATE: 11-1-81
 BY: A
 CHECKED BY: A

TE Connectivity
 KIT, PLUG, SHIELDING HARDWARE,
 SIZE 3, 25 POSN, HDE-20,
 AMPLEATE

SIZE: 114-40002
 PART NO: 100779
 CUSTOMER DRAWING

DATE: 11/18/81
 BY: A
 CHECKED BY: A

SIZE: 2:1
 SHEET: 1 OF 1
 M1