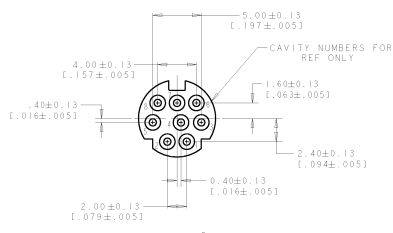
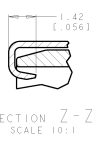
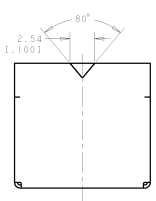
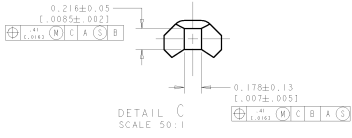
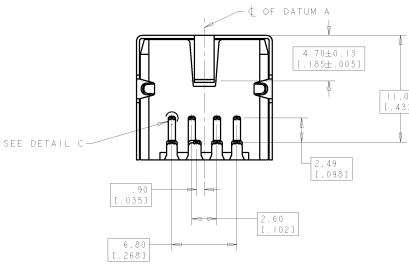
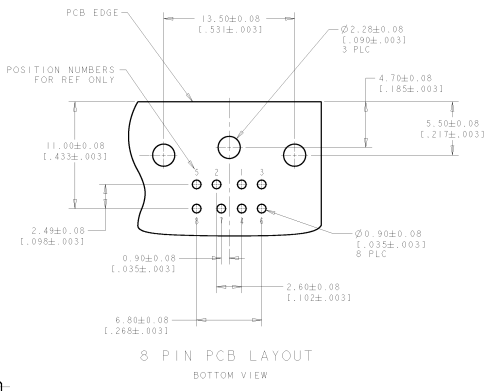
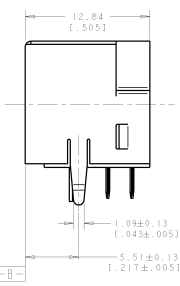
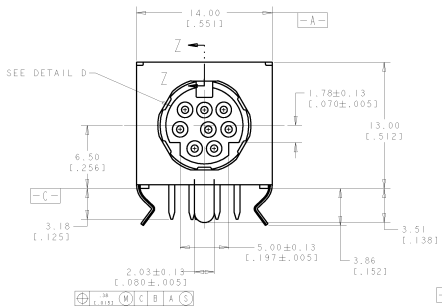


8	7	6	5	4	3	2	1
DATE APPROVED BY: [Signature]	DESIGNED BY: [Signature]						
DATE: [Date]	BY: [Signature]						

REV. NO.		REVISIONS		DATE	BY
01	1	INITIAL DESIGN		04/04/05	[Signature]
02	2	REVISED FOR PCB LAYOUT		04/04/05	[Signature]



- △ MATERIAL:
RECEPTACLE CONTACTS: PHOSPHOR BRONZE
RECEPTACLE SHIELD: COPPER ALLOY.
HOUSING: UL RECOGNIZED 94V-0 RATED THERMOPLASTIC, COLOR, BLACK
- △ PLATING:
RECEPTACLE CONTACTS - GOLD FLASH PLATED ON MATING END, MATTE-TIN PLATED .0030 MIN (.000120 MIN) THICK ON SOLDER TAIL ALL OVER .0013 MIN (.00050 MIN) THICK NICKEL.
- △ PLATING:
RECEPTACLE SHIELD: PRE-TIN PLATED
- 4. RECEPTACLE ASSEMBLY MATES WITH 8 PIN 9.00 ± 0.10 (.354 ± .004)



P/N: 5749232-1 AS SHOWN		REV. 03/24/2005		Tape Electronics Singapore Pte. Ltd.	
MATERIAL: PHOSPHOR BRONZE		SHELL: 94V-0		RECEPTACLE ASSY W/ HOLD DOWN, 8 POS., RIGHT ANGLE, MINIATURE CIRCULAR DIN	
FINISH: GOLD FLASH		SOLDER: 60/40		REVISIONS: 008-1225	
TYPICAL DIMENSIONS IN MILLIMETERS UNLESS OTHERWISE SPECIFIED		UNIT: MILLIMETERS		DRAWN BY: [Signature]	
DATE: 04/04/05		DESIGNED BY: [Signature]		CHECKED BY: [Signature]	
APPROVED BY: [Signature]		DATE: 04/04/05		CAGE CODE: [Code]	
CUSTOMER DRAWING		PART NO: 5749232		REV: 1	