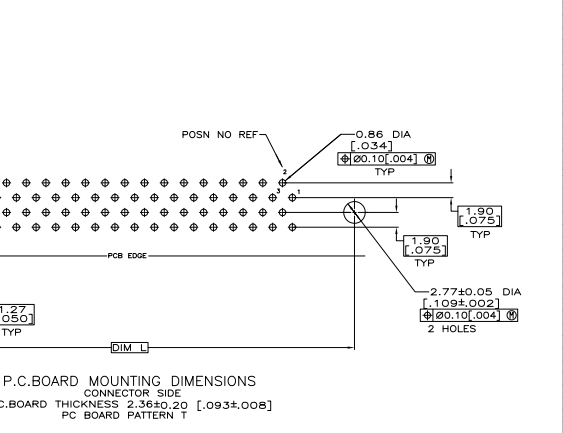
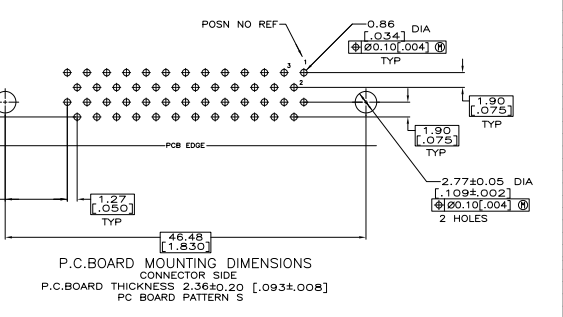
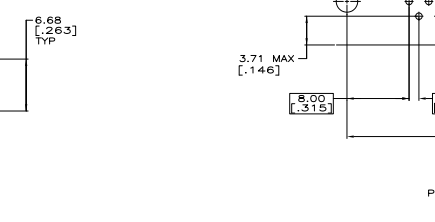
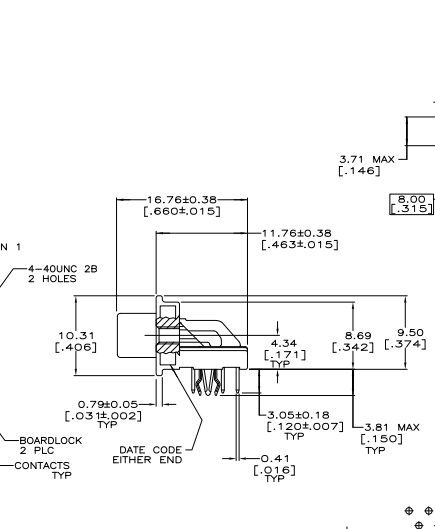
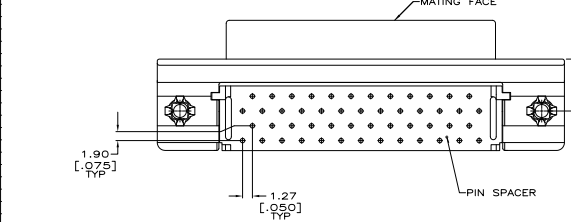
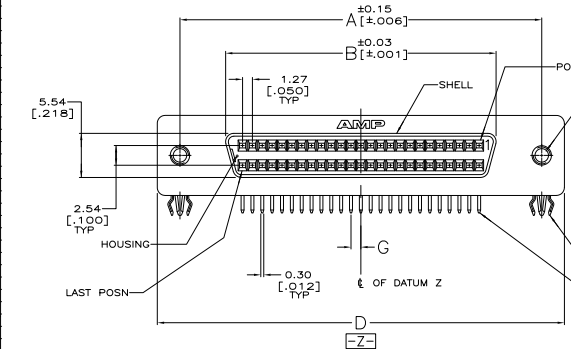
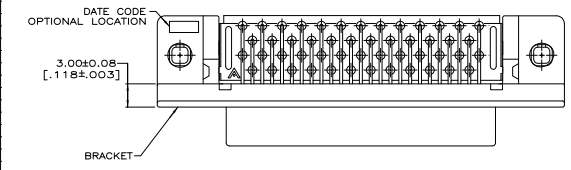
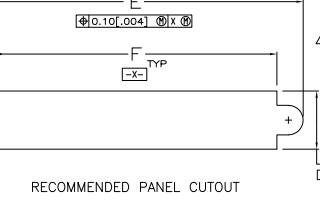


THIS DRAWING IS UNPUBLISHED
 © 2005 BY TTI ELECTRONICS CORPORATION ALL RIGHTS RESERVED

REV	DATE	DESCRIPTION	BY	CHK	APP
T	11/02/09	REVISED PER ECO-08-013072	JLW	ZMR	SLB
TT	18/JAN/2010	REVISED PER ECO-10-000445	JLW	KK	HMR



- MATERIAL**
 CONTACTS: PHOSPHOR BRONZE
 HOUSING & PIN SPACER: UL 94V-0 RATED, THERMOPLASTIC, BLACK
 BRACKET: ZINC
 SHELL: CARBON STEEL
 BOARDLOCKS: COPPER ALLOY.
- FINISH**
 CONTACTS: EITHER 0.76µm [0.00030] MIN GOLD PLATE FOR A LENGTH OF 0.64 [0.025] MAX, 0.13 [0.005] MIN FROM MATING END OR GOLD FLASH OVER
 PALLADIUM NICKEL PLATE, 0.76µm [0.00030] MIN TOTAL FOR A LENGTH OF 0.64 [0.025] MAX, 0.13 [0.005] MIN FROM MATING END, 3.81µm [0.00150] MIN TIN-LEAD ON OPPOSITE END FOR A LENGTH OF 3.23 [0.127] MIN, BOTH OVER 1.27µm [0.00050] MIN NICKEL.
 SHELL: 5.08µm [0.000200] MIN NICKEL OVER 1.27µm [0.000050] MIN COPPER.
 BRACKET: 2.54µm [0.000100] MIN NICKEL OVER 5.08µm [0.000200] COPPER.
- 5.08µm [0.000200] MIN TIN-LEAD OVER 1.27µm [0.000050] MIN NICKEL.
 3.00µm [0.000118] MIN TIN OVER 1.27µm [0.000050] MIN NICKEL.
 OBSOLETE PARTS: OBSOLETE CIS STREAMLINING PER D.RENAUD/D.SINISI



SUP BY	T	78.23 [3.080]	0.64 [0.025]	69.44 [2.734]	82.04 [3.230]	84.20 [3.315]	66.45 [2.616]	78.23 [3.080]	100	787362-0
T	78.23 [3.080]	0.64 [0.025]	69.44 [2.734]	82.04 [3.230]	84.20 [3.315]	66.45 [2.616]	78.23 [3.080]	100	787362-9	
S	57.91 [2.280]	0.64 [0.025]	49.12 [1.934]	61.72 [2.430]	63.88 [2.515]	46.13 [1.816]	57.91 [2.280]	68	787362-7	
S	-	1.27 [0.050]	37.69 [1.484]	50.29 [1.980]	52.45 [2.065]	34.70 [1.366]	46.48 [1.830]	50	787362-5	
OBSOLETE	T	40.13 [1.580]	0.64 [0.025]	36.78 [1.448]	43.56 [1.715]	46.10 [1.815]	28.35 [1.116]	40	787362-4	

PC BOARD PATTERN	BOARDLOCK FINISH	L	G	F	E	D	B	A	NO OF POSN	PART NUMBER

THIS DRAWING IS A CONTROLLED DOCUMENT. DATE: 12-31-04
 DRAWING NO: 108-1228
 REV: 114-40029
 CUSTOMER DRAWING: 100779 (787362)
 SIZE: 4.1 x 1 x 1
 TIT: T1