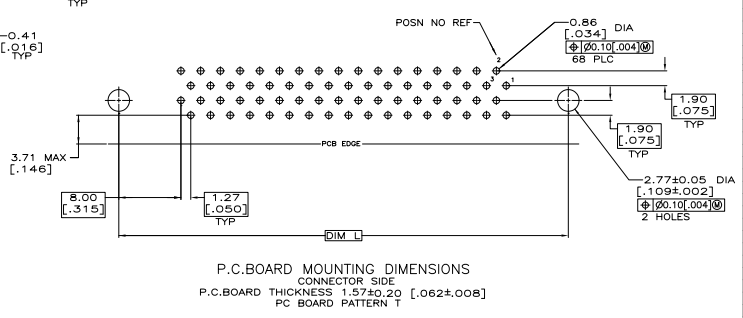
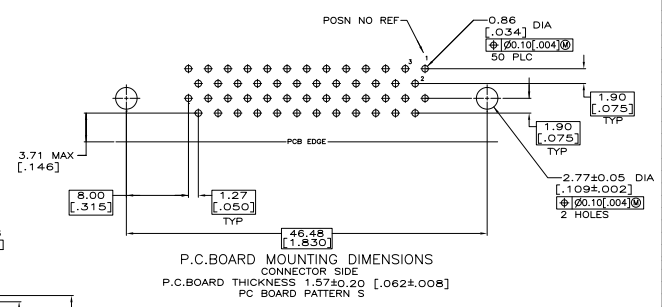
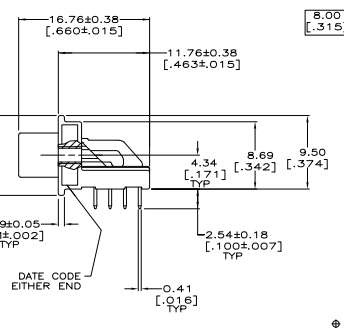
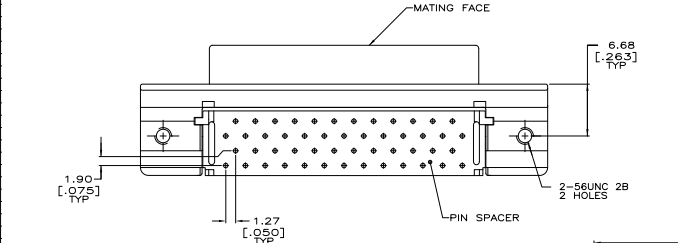
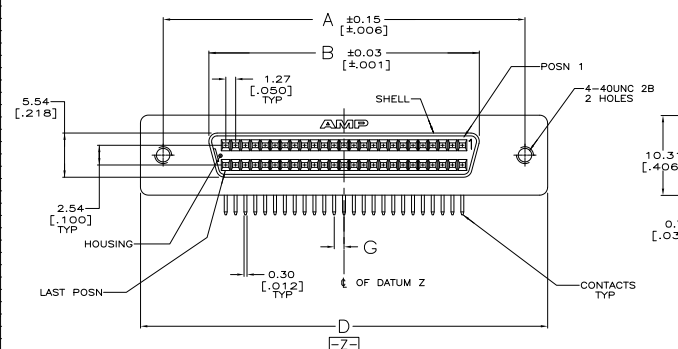
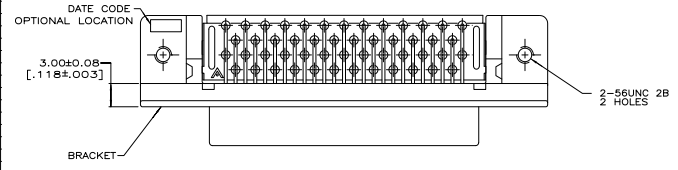
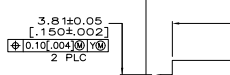


REV	DATE	DESCRIPTION	BY	CHK
GP 00				
T1		REVISED PER EDD-11-004835	11MM11	RK HMR



MATERIAL
 CONTACTS: PHOSPHOR BRONZE
 HOUSING & PIN SPACER: UL 94V-0 RATED, THERMOPLASTIC,
 BLACK
 BRACKET: ZINC
 SHELL: CARBON STEEL

FINISH
 CONTACTS: EITHER 0.76μm [.000030] MIN GOLD PLATE FOR A
 LENGTH OF 0.64 [.025] MAX, 0.13 [.005] MIN FROM MATING END
 OR GOLD FLASH OVER PALLADIUM NICKEL PLATE, 0.76μm
 [.000030] MIN TOTAL FOR A LENGTH OF 0.64 [.025] MAX, 0.13
 [.005] MIN FROM MATING END, 3.81μm [.000150] MIN TIN-LEAD
 ON OPPOSITE END FOR A OF 2.72 [.107] MIN, ALL OVER 1.27μm
 [.000050] MIN NICKEL UNDERPLATE.
 SHELL: 5.08μm [.000200] MIN NICKEL OVER 1.27μm [.000050]
 MIN COPPER.
 BRACKET: 2.54μm [.000100] MIN NICKEL OVER 5.08μm [.000200]
 COPPER.



RECOMMENDED PANEL CUTOUT

PC BOARD PATTERN	L	G	F	E	D	B	A	NO OF POSN	PART NUMBER
T	78.23	0.64	69.44	82.04	84.20	66.45	78.23	100	787169-9
	3.080	[.025]	2.734	3.230	3.315	2.616	3.080		
T	57.91	0.64	49.12	61.72	63.88	46.13	57.91	68	787169-7
	2.280	[.025]	1.934	2.430	2.515	1.816	2.280		
S	-	1.27	37.69	50.29	52.45	34.70	46.48	50	787169-5
		[.050]	1.484	1.980	2.065	1.366	1.830		

THIS DRAWING IS A CONTROLLED DOCUMENT. THE USER SHALL BE RESPONSIBLE FOR THE LATEST REVISION.
 DRAWING NO: 114-40029
 DATE: 108-1228
 SIZE: 114-40029
 PART: A100779
 CUSTOMER DRAWING
 RECEPTACLE ASSEMBLY, SHIELDED, RIGHT ANGLE, J50 SERIES, AMP/LMITE
 TE Connectivity