

4

3

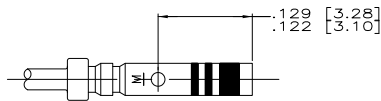
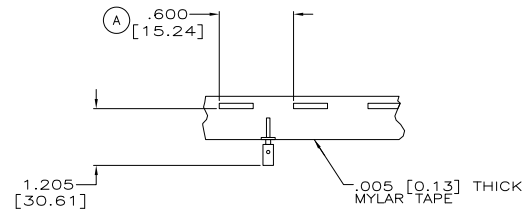
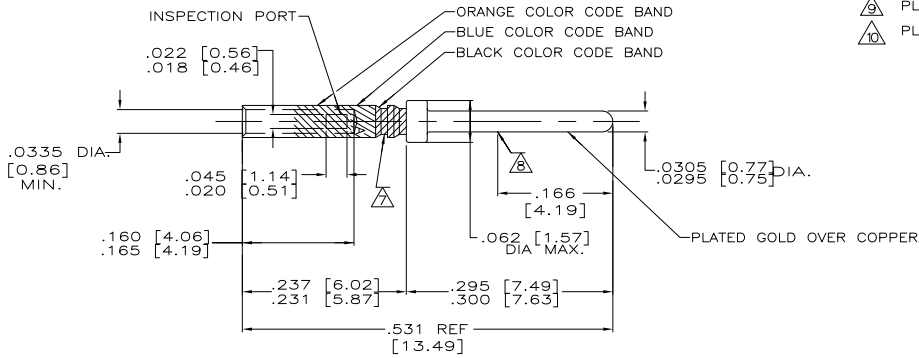
2

1

THIS DRAWING IS UNPUBLISHED. RELEASED FOR PUBLICATION  
 © COPYRIGHT - By - ALL RIGHTS RESERVED.

LOC	DIST	REVISIONS		
P	LTR	DESCRIPTION	DATE	BY
R		REV PER ECO-10-020411	02DEC10	SK RL

1. WIRE BARREL WILL ACCEPT #22-28 AWG WIRE.
  2. CRIMPING TOOL- USE MS3198-1 WITH APPLICABLE POSITIONER.
  3. CONTACT CONFORMS TO MIL-C-39029/58, SIZE 22. & MS27493-22D.
  4. NET WEIGHT- .072 GRAMS.
  5. INSERTION, EXTRACTION TOOL- AMP P/N 91067-1.
6. THIS CONTACT IDENTIFIED AS MS27493-22D SUPERSEDES M24308/13-1.  
 7. IDENTIFICATION GROOVE IS OPTIONAL.  
 8. POINT OF PLATING THICKNESS MEASUREMENT.  
 9. PLATING: GOLD PER MIL-G-45205 OVER NICKEL PER QQ-N-290.  
 10. PLATING: GOLD PER ASTM-B-488 OVER COPPER PER MIL-C-14550



ALTERNATE CONFIGURATION

WHEN ORDERING CONTACT ON TAPE, ORDER BY THE TAPE NUMBER PLUS THE PACKAGE CODE AS FOLLOWS:

2. FOR USE WITH AMP TAPETRONIC, PNEUMATIC TOOL-  
 A. 1000 PARTS TO A BOX ADD PACKAGING CODE: 1MBOX
3. FOR USE WITH 4/8 INDENT STRIPPER CRIMPER-  
 A. 1000 PARTS TO A REEL ADD PACKAGING CODE: 1MREEL  
 B. 5000 PARTS TO A REEL ADD PACKAGING CODE: 5MREEL

AS SHOWN	△	1-204370-3
CONTACTS ON TAPE WITH COLOR CODE	SAME AS -3	1-204370-2
WITHOUT COLOR CODE	△	204370-8
CONTACTS ON TAPE	SAME AS -2	204370-5
AS SHOWN	△	204370-2
DESCRIPTION	PLATING	PART NO.

THIS DRAWING IS A CONTROLLED DOCUMENT.		BY	DATE	TE Connectivity	
DIMENSIONS:		R. RINEHART	10-3-90	CONTACT PIN, SIZE 22D	
INCHES		CK	10-15-90	-	
TOLERANCES UNLESS OTHERWISE SPECIFIED:		A. EMADI	10-15-90	-	
0 PLC ± .005		APPC	10-15-90	-	
1 PLC ± .005		PRODUCT SPEC		-	
2 PLC ± .005		APPLICATION SPEC		-	
3 PLC ± .005		WEIGHT		-	
4 PLC ± .005		CUSTOMER DRAWING		-	
ANGLES ± .5°		SIZE		-	
FINISH		CASE CODE		-	
-		DRAWING NO.		-	
-		A2 00779 C-204370		RESTRICTED TO	
-		SCALE		-	
-		10:1		-	
-		SHEET		-	
-		1 of 1		-	
-		REV		-	
-		R		-	

1471-9 (3/11)

204370

B

A