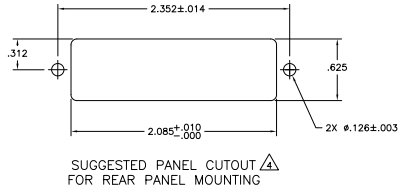
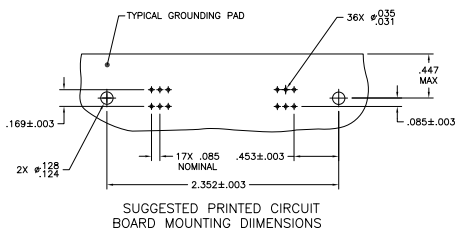
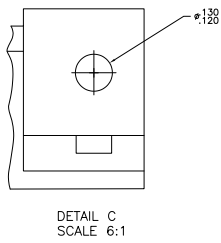
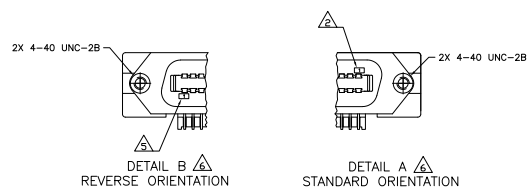
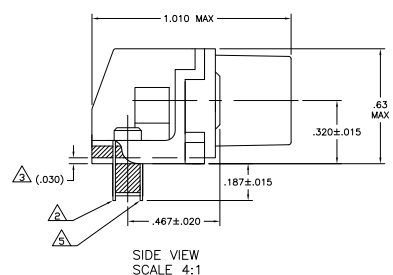
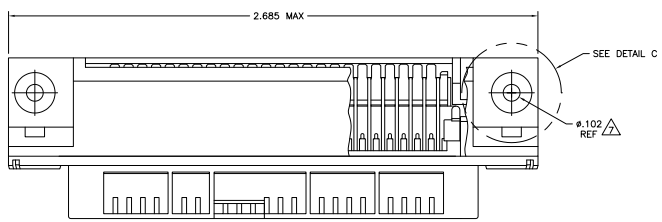


THIS DRAWING IS UNPUBLISHED  
 UNLESS OTHERWISE INDICATED  
 © 2008 Tyco Electronics Corporation ALL RIGHTS RESERVED

REV	DATE	DESCRIPTION	BY	CHKD
T	REVISED PER EOC-08-007327		DMF/PSH	BM WM
TT	REVISED PER EOC-10-000444			LSJ/M10 KK AEG



- △ MATERIAL: HOUSING, BRACKET, ADAPTER COMB & PLATE - THERMOPLASTIC, BLACK, 94V-0 RATED TERMINALS - HIGH STRENGTH COPPER ALLOY PLATED WITH EITHER .00030 MIN GOLD PLATE OR GOLD FLASH OVER PALLADIUM NICKEL PLATE .00030 MIN TOTAL ON MATING SURFACE. .000120 MIN TIN-LEAD PLATE ON TAILS. ALL OVER .000050 MIN NICKEL UNDERPLATE OVER ENTIRE TERMINAL.
- △ TERMINAL 1 IS LOCATED IN THIS ROW FOR 552742-1 & -3.
- △ TERMINAL SUPPORT PLATE CLEARANCE FOR TERMINAL STRAIN RELIEF AND FLUX REMOVAL.
- △ PANEL THICKNESS RANGE: .062 MAX.
- △ TERMINAL 1 IS LOCATED IN THIS ROW FOR 552742-2.
- △ DETAILS A & B ARE VIEWED FROM MATING SIDE OF RECEPTACLE ASSEMBLY.
- △ FOR USE WITH A NO. 4 BT TYPE SELF TAPPING SCREW.
- △ OBSOLETE PARTS: OBSOLETE CIS STREAMLINER PER D.RENAUD/D.SINISI



△ OBSOLETE	THRU BOLT SEE DETAIL C	SEE DETAIL A	552742-3
△ OBSOLETE	SELF-TAPPING	SEE DETAIL B	552742-2
	SELF-TAPPING	SEE DETAIL A	552742-1
TYPE OF MOUNTING	DESCRIPTION	PART NUMBER	

THIS DRAWING IS A CONTROLLED DOCUMENT.		Tyco Electronics Corporation	
DESIGNER	DATE	REVISED BY	DATE
CHECKED BY	DATE	APPROVED BY	DATE
APPROVED BY	DATE	CUSTOMER DRAWING	DATE
DESCRIPTION		ASSEMBLY RECEPTACLE, 36 POSITION, RIGHT ANGLE, PRINTED CIRCUIT BOARD (CHAMP-LOW, THRU-BOLT & SELF-TAPPING)	
SIZE	SCALE	REV	REV
A1	00779 @ 552742	1	1