

Specification Status: Released

Maximum Electrical Rating

Operating Voltage: 12Vdc
Interrupt Current: 100A

Chip Size: 3.6 X 10mm

Leads: Nickel 1/4H
0.125mm nominal thickness

Tape: None

Solder: Lead-Free

Marking: None

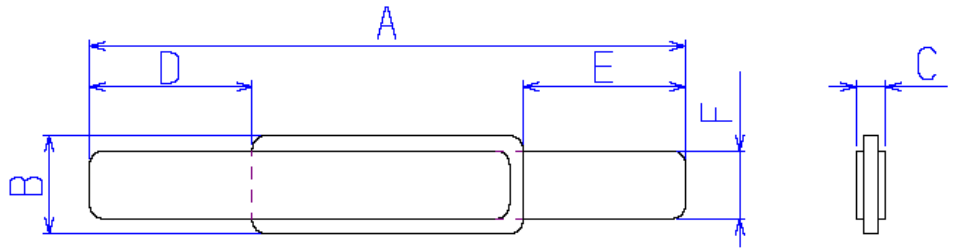


TABLE I. DIMENSIONS:

| | A | | B | | C | | D | | E | | F | |
|------|--------|--------|--------|--------|-----|--------|--------|--------|--------|--------|--------|--------|
| | MIN | MAX | MIN | MAX | MIN | MAX | MIN | MAX | MIN | MAX | MIN | MAX |
| mm: | 20.8 | 23.2 | 3.5 | 3.7 | --- | 0.7 | 5.3 | 6.7 | 5.3 | 6.7 | 2.4 | 2.6 |
| in*: | (0.81) | (0.91) | (0.14) | (0.15) | -- | (0.03) | (0.21) | (0.26) | (0.21) | (0.26) | (0.09) | (0.10) |

*Rounded off approximation

TABLE II. PERFORMANCE RATINGS: As measured in Mueller Kelvin Clips model BU-75K.

| I HOLD | CURRENT TRIP LIMITS | | | | | | | | | TIME TO TRIP | REFERENCE RESISTANCE | ONE-HOUR POST-TRIP RESISTANCE | TRIPPED-STATE POWER DISSIPATION | | | |
|--------|---------------------|------|--------------|------|--------------|------|--------------|------|-----------------------|--------------|----------------------|-------------------------------|---------------------------------|-------|--------------|-----|
| | AMPS AT 0°C | | AMPS AT 25°C | | AMPS AT 60°C | | AMPS AT --°C | | SECONDS AT 25°C, 8.5A | | | | | | OHMS AT 25°C | |
| HOLD | HOLD | TRIP | HOLD | TRIP | HOLD | TRIP | HOLD | TRIP | HOLD | TRIP | MIN | MAX | MIN | MAX | MIN | MAX |
| 1.7 | 2.4 | 5.6 | 1.7 | 4.1 | 0.7 | 1.9 | --- | --- | --- | 5 | 0.018 | 0.032 | 0.018 | 0.064 | --- | 1.4 |

Agency Recognitions:
Reference Documents:
Precedence:
Effectivity:
CAUTION:

UL, TUV, CSA
PS300
This specification takes precedence over documents referenced herein.
Reference documents shall be the issue in effect on the date of invitation for bid.
Operation beyond the rated voltage or current may result in rupture, electrical arcing or flame.

Materials Information:

ROHS Compliant

Directive 2002/95/EC
Compliant

ELV Compliant

Directive 2000/53/EC
Compliant

Pb-Free

