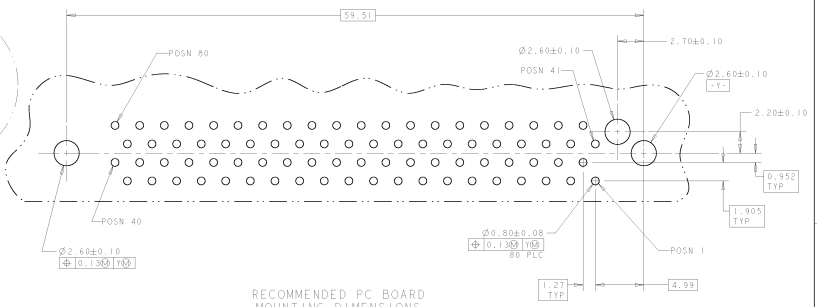
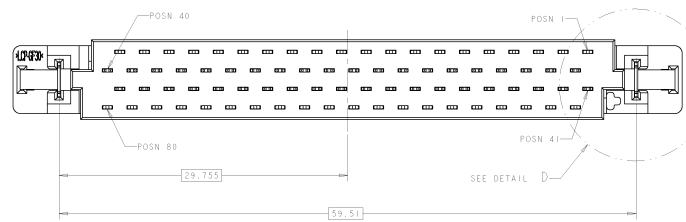
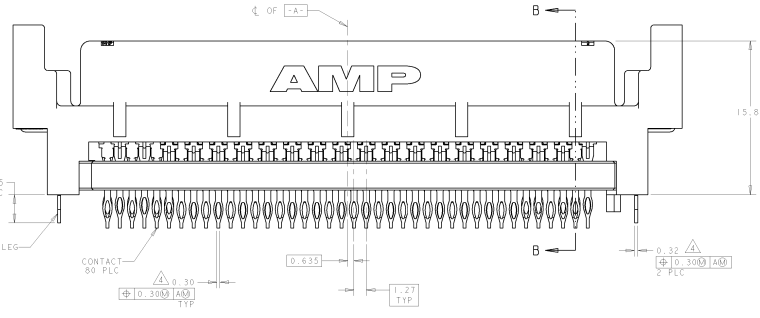
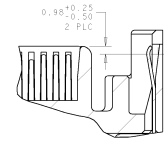
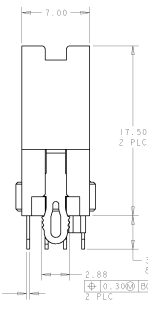
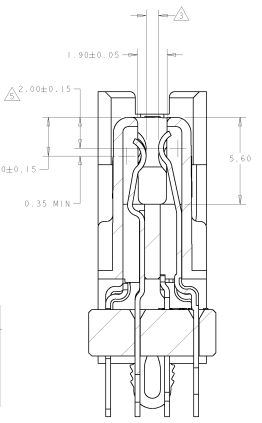
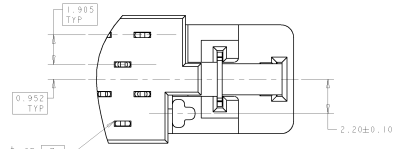
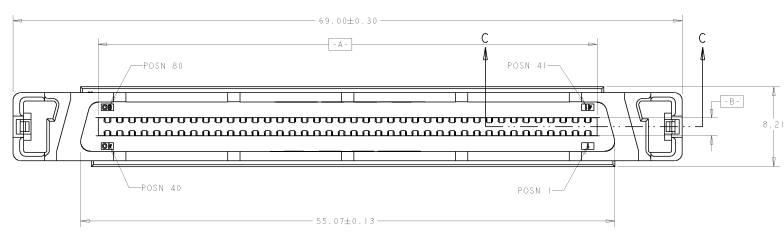


DATE DRAWING TO BE SUPERSEDED	REVISIONS FOR IDENTIFICATION
00	BY TECH ELECTRONICS COMPANY, 8111 WILMOT DRIVE

REV	DATE	DESCRIPTION	BY	CHKD	APPD
00					
01		REVISED PER EC 8513-0451-04			



- △ HOUSING: LCP, UL 94V-0 RATED, BLACK.
- CONTACTS: PHOSPHOR BRONZE.
- RETENTION LEG: BRASS.
- CONTACTS: 0.76µm GOLD FOR A LENGTH OF 1.90 MIN STARTING 0.40 MAX FROM MATING END. 1.27µm-3.81µm TIN-LEAD FOR A LENGTH OF 3.43 MIN FROM OPPOSITE END, BOTH OVER 1.27µm MIN NICKEL.
- CONNECTOR WILL ACCOMMODATE MATING PRINTED CIRCUIT BOARD OF 1.60±0.07 THICKNESS.
- POSITION TOLERANCE APPLIES AT CONTACT TIP ONLY.
- DIMENSION APPLIES TO CONTACTS 1, 36 THRU 43, 45, 46, & 75 THRU 80.
- DIMENSION APPLIES TO CONTACTS 2 THRU 35, 44, & 47 THRU 74.
- RETENTION LEG: 3.81µm MIN TIN-LEAD OVER 1.27µm MIN NICKEL.
- RECOMMENDED PC BOARD THICKNESS IS 2.34 TO 3.81.
- CONTACTS: 0.76µm GOLD FOR A LENGTH OF 1.90 MIN STARTING 0.40 MAX FROM MATING END. 1.27µm-3.81µm TIN FOR A LENGTH OF 3.43 MIN FROM OPPOSITE END, BOTH OVER 1.27µm MIN NICKEL.
- RETENTION LEG: 3.81µm MIN TIN OVER 1.27µm MIN NICKEL.

RECOMMENDED PC BOARD MOUNTING DIMENSIONS COMPONENT SIDE

YES	NO	LEAD-FREE	FINISH	PART NUMBER
				T88395-2
				T88395-1

MANUFACTURER AMP PART NUMBER T88395-2 MATERIAL SEE TABLE	DATE 08/13/04 REVISED PER EC 8513-0451-04 CUSTOMER DRAWING	RECEPTACLE ASSEMBLY, PRESS FIT, EXTENDED HEIGHT, VERTICAL, 80 POSN. SERIES I, CHAMP BLINDMATE AMP CORPORATION HARRISBURG, PA 17105-1800 A 00778 788395
---	---	---