

4

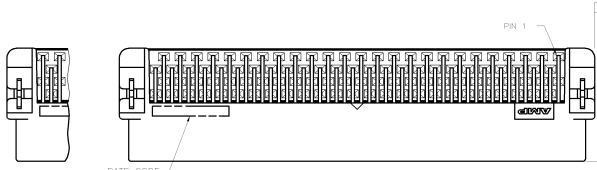
3

2

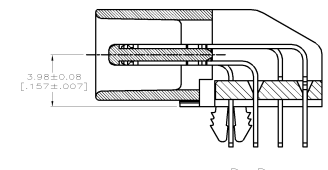
1

THIS DRAWING IS UNPUBLISHED. RELEASED FOR PUBLICATION AUG. 2006.
 COPYRIGHT - BY TYCO ELECTRONICS CORPORATION. ALL RIGHTS RESERVED.

LOC	DIST	REVISIONS			
P	LTR	DESCRIPTION	DATE	DWN	APVD
		REVISED. (ECR-10-026339)	23MAY11	JC	WK



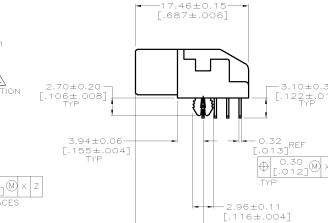
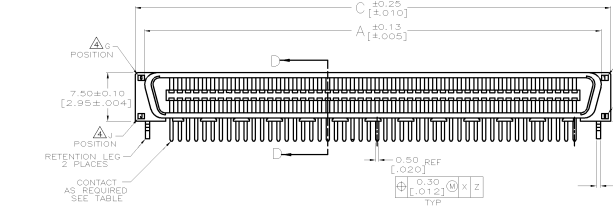
FOR 50 AND 130 POSITIONS ONLY
 FOR 40, 60, 68, 80, 100, 120, 140, 160, 180 AND 200 POSITIONS ONLY



SECTION D-D
 SCALE 8:1

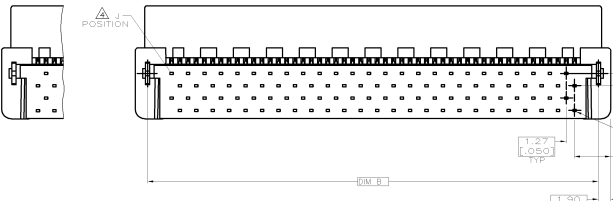
C

C



B

B



NOTE:
 1. MATERIAL:
 HOUSING: LCP, UL 94V-0, BLACK COLOR.
 CONTACTS: PHOSPHOR BRONZE.
 BOARDLOCKS: BRASS.
 FINISH:
 CONTACTS: (SEE TABLE) GOLD PLATED ON CONTACT AREA,
 3.81um [150u"] MIN. MATTE-TIN ON SOLDERTAIL, OVER
 1.27um [50u"] MIN. NICKEL UNDERPLATED.
 BOARDLOCKS: 3.81um [150u"] MIN. TIN-CU OVER
 1.27um [50u"] MIN. UNDERPLATED.
 3. WAVE SOLDER CAPABLE TO 265°C PER TEST SPEC.
 Q, J, H INDICATE NUMBER OF POSITION MARKED ON ASSEMBLY.
 ALSO SEE TABLE.
 GOLD FLASH OVER
 0.762um [30u"] MIN. PALLADIUM-NICKEL PLATED.

DIMENSIONS:		TOLERANCES UNLESS OTHERWISE SPECIFIED:	
MM			
0 PLC	±	0 PLC	±
1 PLC	±0.25	1 PLC	±0.25
2 PLC	±0.2	2 PLC	±0.2
3 PLC	±	3 PLC	±
4 PLC	±	4 PLC	±
ANGLES	±	ANGLES	±

136.93	133.13	134.07	100	200	101	GOLD FLASH	5-1734099-8	200
[5.891]	[5.241]	[5.278]				0.381um[15u"]	3-1734099-8	
							1-1734099-8	
111.53	107.73	108.67	80	160	81	GOLD FLASH	5-1734099-6	160
[4.391]	[4.241]	[4.278]				0.381um[15u"]	3-1734099-6	
							1-1734099-6	
98.83	95.03	95.97	70	140	71	GOLD FLASH	5-1734099-4	140
[3.891]	[3.741]	[3.778]				0.381um[15u"]	3-1734099-4	
							1-1734099-4	
86.13	82.33	83.27	20	120	61	GOLD FLASH	5-1734099-2	120
[3.391]	[3.241]	[3.278]				0.381um[15u"]	3-1734099-2	
							1-1734099-2	
73.43	69.63	70.57	50	100	51	GOLD FLASH	5-1734099-0	100
[2.891]	[2.741]	[2.778]				0.381um[15u"]	3-1734099-0	
							1-1734099-0	
60.73	56.93	57.87	40	80	41	GOLD FLASH	4-1734099-8	80
[2.391]	[2.241]	[2.278]				0.381um[15u"]	2-1734099-8	
							1734099-8	
53.11	49.31	50.25	34	68	35	GOLD FLASH	4-1734099-7	68
[2.091]	[1.941]	[1.978]				0.381um[15u"]	2-1734099-7	
							1734099-7	
48.03	44.23	45.17	30	60	31	GOLD FLASH	4-1734099-6	60
[1.891]	[1.741]	[1.778]				0.381um[15u"]	2-1734099-6	
							1734099-6	
41.68	37.88	38.82	25	50	26	GOLD FLASH	4-1734099-5	50
[1.641]	[1.491]	[1.528]				0.381um[15u"]	2-1734099-5	
							1734099-5	
35.33	31.53	32.47	20	40	21	GOLD FLASH	4-1734099-4	40
[1.391]	[1.241]	[1.278]				0.381um[15u"]	2-1734099-4	
							1734099-4	
C	B	A	Q	J	H	GOLD PLATED	PART NUMBER	POS.



PLUG ASSEMBLY, R/A,
 BTB, CHAMP .050, SERIES I

SIZE	CAGE CODE	DRAWING NO	RESTRICTED
A3	00779	1734099	
SCALE	SHEET	1 OF 4	REV E

4

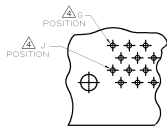
3

2

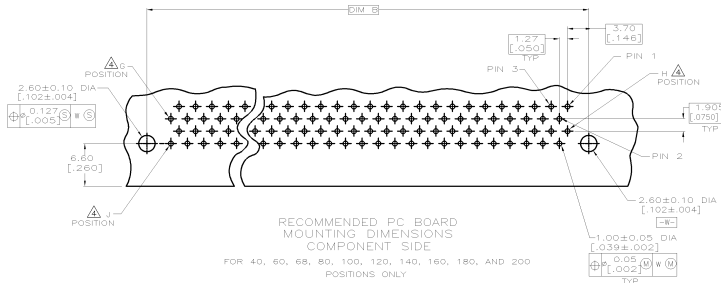
1

THIS DRAWING IS UNPUBLISHED. RELEASED FOR PUBLICATION AUG. 2006.
 © COPYRIGHT - BY TYCO ELECTRONICS CORPORATION. ALL RIGHTS RESERVED.

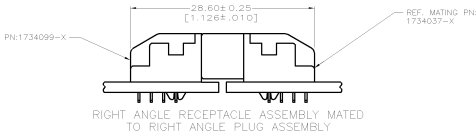
LOC	DIST	REVISIONS			
P	LTR	DESCRIPTION	DATE	DWN	APVD
SEE SHEET 1.					



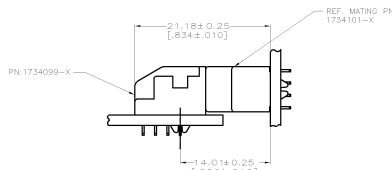
FOR 50, AND 130
POSITIONS ONLY



RECOMMENDED PC BOARD
MOUNTING DIMENSIONS
COMPONENT SIDE
FOR 40, 60, 68, 80, 100, 120, 140, 160, 180, AND 200
POSITIONS ONLY



RIGHT ANGLE RECEPTACLE ASSEMBLY MATED
TO RIGHT ANGLE PLUG ASSEMBLY



RIGHT ANGLE RECEPTACLE ASSEMBLY MATED
TO VERTICAL PLUG ASSEMBLY

THIS DRAWING IS A CONTROLLED DOCUMENT.		DWN	STE TE Connectivity	
DIMENSIONS: MM		CHK		
TOLERANCES UNLESS OTHERWISE SPECIFIED:		APVD	NAME	
0 PLC	±	PRODUCT SPEC	PLUG ASSEMBLY, R/A, BTB, CHAMP .050, SERIES I	
1 PLC	±	APPLICATION SPEC	SIZE	CAGE CODE
2 PLC	±	WEIGHT	A3	00779
3 PLC	±	CUSTOMER DRAWING	DRAWING NO	
4 PLC	±	SCALE	C-1734099	
ANGLES	±	SHEET	RESTRICTED	
FINISH		2 of 4	REV E	

4

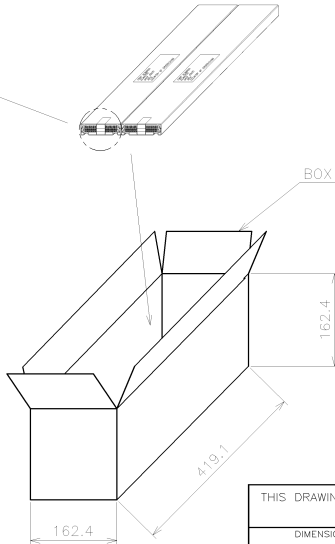
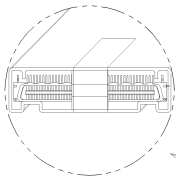
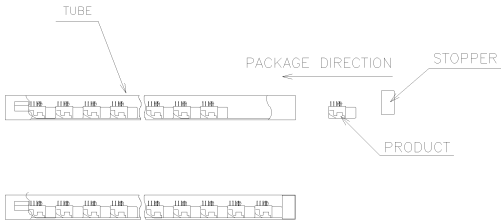
3

2

1

THIS DRAWING IS UNPUBLISHED. RELEASED FOR PUBLICATION AUG. 2006.
 © COPYRIGHT - BY TYCO ELECTRONICS CORPORATION. ALL RIGHTS RESERVED.

LOC	DIST	REVISIONS				
P	LTR	DESCRIPTION	DATE	DWN	APVD	
		SEE SHEET 1.				



100	21	16	336	2.60	3.44	5-1734099-0
						3-1734099-0
						1-1734099-0
80	21	16	336	2.15	3.00	4-1734099-8
						2-1734099-8
						1734099-8
POS.	Q'TY/ TUBE	TUBE/ BOX	Q'TY/ BOX	N/W (KG)	G/W (KG)	PART NUMBER

THIS DRAWING IS A CONTROLLED DOCUMENT.

DIMENSIONS: MM	TOLERANCES UNLESS OTHERWISE SPECIFIED:	DWN	CHK	TE Connectivity PLUG ASSEMBLY, R/A, BTB, CHAMP .050, SERIES I
	0 PLC ± -	APVD	NAME	
	1 PLC ± -	PRODUCT SPEC	SIZE	
	2 PLC ± -	APPLICATION SPEC	CAGE CODE	
MATERIAL	FINISH	WEIGHT	DRAWING NO	RESTRICTED
			A3 00779	©-1734099
CUSTOMER DRAWING			SCALE	SHEET 3 of 4
			REV	E

4

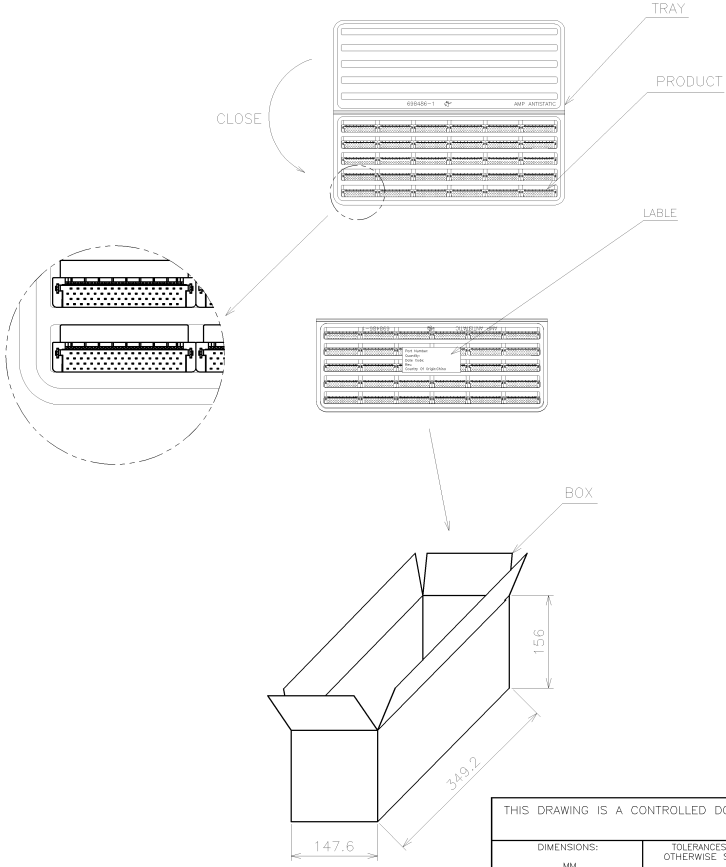
3

2

1

THIS DRAWING IS UNPUBLISHED. RELEASED FOR PUBLICATION AUG. 2006.
 © COPYRIGHT - BY TYCO ELECTRONICS CORPORATION. ALL RIGHTS RESERVED.

LOC	DIST	REVISIONS				
P	LTR	DESCRIPTION	DATE	DWN	APVD	
SEE SHEET 1.						



200	10	10	100	1.40	2.35	5-1734099-8 3-1734099-8 1-1734099-8
160	10	10	100	1.18	2.13	5-1734099-6 3-1734099-6 1-1734099-6
140	15	10	150	1.59	2.46	5-1734099-4 3-1734099-4 1-1734099-4
120	15	10	150	1.20	2.15	5-1734099-2 3-1734099-2 1-1734099-2
68	30	10	300	1.69	2.64	4-1734099-7 2-1734099-7 1734099-7
60	30	10	300	1.53	2.48	4-1734099-6 2-1734099-6 1734099-6
50	35	10	350	1.58	2.56	4-1734099-5 2-1734099-5 1734099-5
40	45	10	450	1.71	2.66	4-1734099-4 2-1734099-4 1734099-4
POS.	Q'TY/ TRAY	TRAY/ BOX	Q'TY/ BOX	N/W (KG)	G/W (KG)	PART NUMBER

THIS DRAWING IS A CONTROLLED DOCUMENT.		DWN
DIMENSIONS: MM		CHK
TOLERANCES UNLESS OTHERWISE SPECIFIED:		APVD
0 PLC	±	PRODUCT SPEC
1 PLC	±	APPLICATION SPEC
2 PLC	±	WEIGHT
3 PLC	±	
4 PLC	±	
ANGLES	±	
MATERIAL	FINISH	

STE TE Connectivity

NAME

PLUG ASSEMBLY, R/A,
BTB, CHAMP .050, SERIES I

RESTRICTED

SIZE CAGE CODE DRAWING NO
A3 00779 C-1734099

CUSTOMER DRAWING

SCALE SHEET 4 OF 4 REV E