

4

3

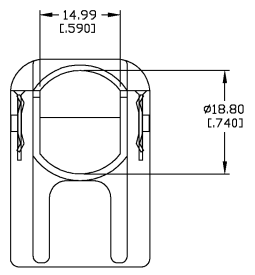
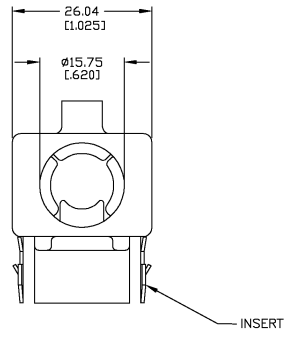
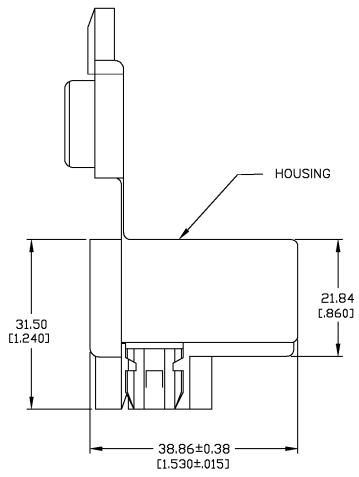
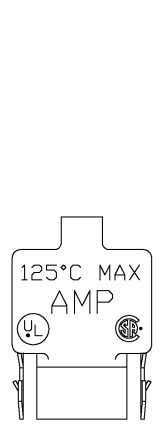
2

1

THIS DRAWING IS UNPUBLISHED. RELEASED FOR PUBLICATION BY AMP INCORPORATED. ALL RIGHTS RESERVED.

LOC	DIST	REVISIONS			
AA	27	REV	DESCRIPTION	DATE	BY
		F	REDWN & REV PER EC 0840-0133-00	20JUN00	LMH/LHS

- 1 FITS STANDARD KNOCKOUT 23.01 [.906] DIA. 21.84 [.860] DIA.
- 2 PANEL RETENTION MECHANISM ACCOMMODATES PANEL THICKNESSES FROM 0.81 [.032] TO 2.31 [.091] .
- 3 HOUSING: NYLON, BLACK. INSERT: CARBON STEEL, 0.64 [.025] THICK.
- 4 INSERT: 15.24μm [0.00600] MIN ZINC.



207508-1
PART NO.

THIS DRAWING IS A CONTROLLED DOCUMENT.		DRN L. SMALL	19MAY00	AMP AMP Incorporated Harrisburg, PA 17105-3608
DIMENSIONS: MM (Inches)		CHK L.H. SMITH	20JUN00	
TO: HARRISBURG PLANT		APP F. LINCOLN	20JUN00	NAME CONNECTOR ASSEMBLY, .375 x 90° FLEXIBLE CONDUIT
OTHER: NONE SPECIFIED		PRODUCT SPEC		APPLICATION SPEC
MATERIAL		WEIGHT	SIZE	CASE CODE
FINISH			A2	00779
		CUSTOMER DRAWING	SCALE	1:1
			SHEET	1 OF 1
			REV	F

AMP 1471-9 REV 23FEB95
19MAY00 7:32am AMP36234

207508

A