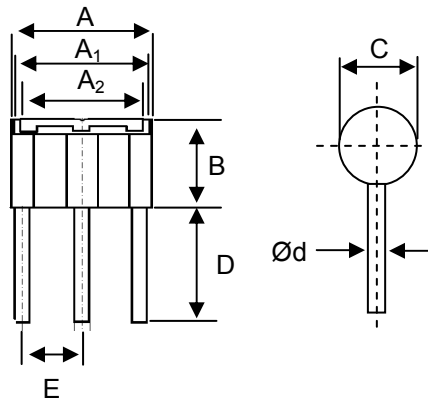
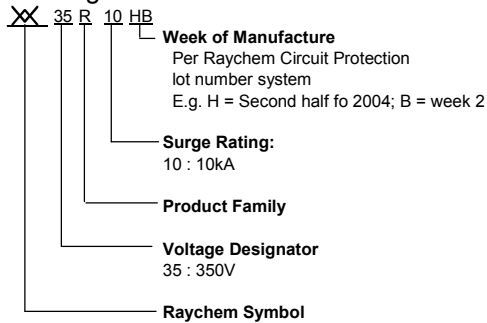


# Gas Discharge Tube

## Overvoltage Protection Device

**Specification Status: RESTRICTED**

**Marking:**



**TABLE I. DIMENSIONS**

|      | A       |         | A <sub>1</sub> | A <sub>2</sub> |         | B       |         | C       |         | D       |         | E       |         | Ød      |
|------|---------|---------|----------------|----------------|---------|---------|---------|---------|---------|---------|---------|---------|---------|---------|
|      | MIN     | MAX     | NOM            | MIN            | MAX     | MIN     | MAX     | MIN     | MAX     | MIN     | MAX     | MIN     | MAX     | NOM     |
| mm:  | 9.0     | 9.4     | 8.6            | 7.9            | 8.5     | 5.8     | 6.2     | 5.8     | 6.2     | 7.5     | 8.5     | 3.6     | 4.0     | 0.8     |
| in:* | (0.354) | (0.370) | (0.339)        | (0.311)        | (0.335) | (0.228) | (0.244) | (0.228) | (0.244) | (0.295) | (0.335) | (0.142) | (0.158) | (0.032) |

\*Rounded off approximation

**TABLE II. Electrical Characteristics**

| Part Number        | DC Sparkover Voltage | Impulse Sparkover Voltage | Insulation Resistance | Capacitance | Impulse Discharge Current 8/20 µs        | Impulse Discharge Current 10/1000 µs | AC Discharge Current, 50 Hz |
|--------------------|----------------------|---------------------------|-----------------------|-------------|--|--------------------------------------|-----------------------------|
|                    | (A-E) (B-E)          | (A-E) (B-E)               |                       |             | (A+B-E)                                  | (A+B-E)                              | (A+B-E)                     |
|                    | @ 100V/s             | @1kV / µs                 | @100 V <sub>DC</sub>  | @ 1MHz      | Repeat 10 times (5 times, each polarity) | 300 times                            | Repeat 1s duration          |
| GTCR36-351M-R10-FT | 350V ± 20%           | < 900V                    | ≥ 1,000MΩ             | <1.5pF      | 10kA                                     | 200A                                 | 10A, 10 times               |

**General Characteristics**

No Radioactive Materials  
Storage temperature: -40°C ... +85°C  
Operating temperature: -40°C ... +85°C  
Electrode Material: Tin Plating  
Body Material: Ni Plating

**Materials Information**

**RoHS Compliant**

Directive 2002/95/EC Compliant

**ELV Compliant**

Directive 2000/53/EC Compliant

Precedence:  
Effectivity:  
CAUTION:

This specification takes precedence over documents referenced herein.  
Reference documents shall be the issue in effect on the date of invitation for bid.  
Operation beyond the rated voltage or current may result in rupture, electrical arcing or flame.