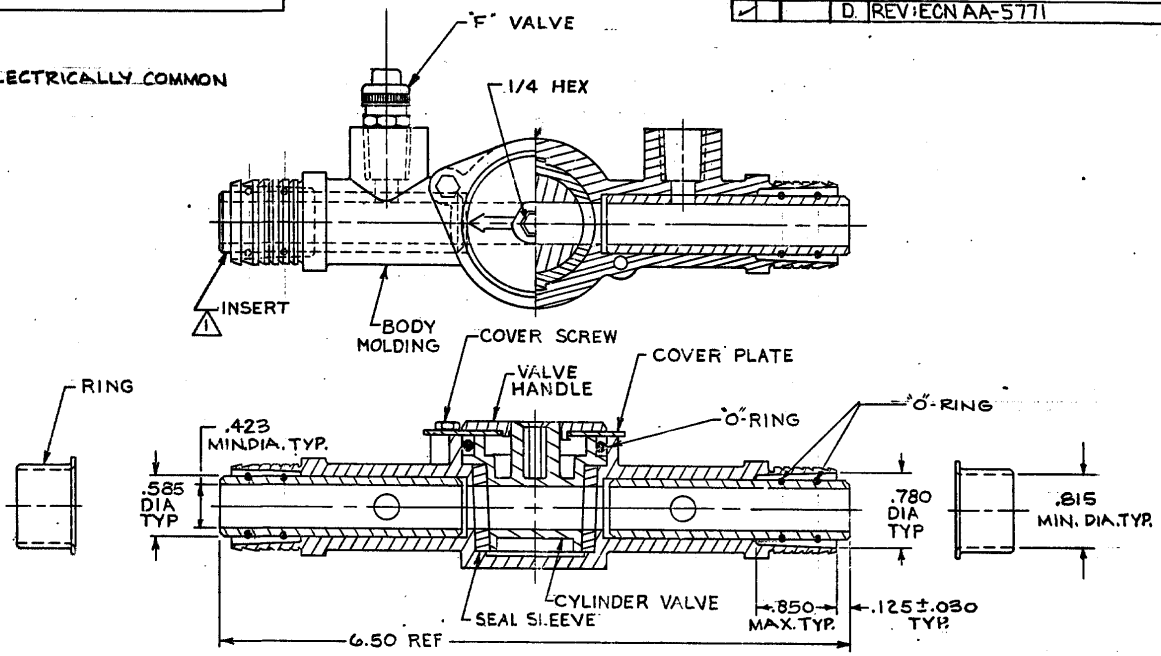


DRAWING MADE IN THIRD ANGLE PROJECTION

© COPYRIGHT 1978 BY AMP INCORPORATED, HARRISBURG, PA.
 ALL INTERNATIONAL RIGHTS RESERVED, AMP INCORPORATED PRODUCTS
 COVERED BY U. S. AND FOREIGN PATENTS AND/OR PATENTS PENDING.

REVISIONS					
#	ZONE	LTR	DESCRIPTION	DATE	APPROVED
1			D. REV: EON AA-5771	8-29-89	LHS TC



2	VALVE (ONE ILLUSTRATED)	F VALVE PRESSURE TESTING
2	COVER & COMMONING SCREW	300 SERIES STAINLESS STEEL, PASSIVATED
2	RING	TYPE 316 STAINLESS STEEL, PASSIVATED
1	COVER PLATE	300 SERIES STAINLESS STEEL, PASSIVATED
5	O-RING	(BUNA N) NITRILE
1	SEAL SLEEVE	NEOPRENE
2	INSERT	ALUMINUM, ALLOY 6063 TEMPER 6
1	VALVE HANDLE	ACETYL, COLOR, BLACK
1	CYLINDER VALVE	NYLON, COLOR, BLACK
1	BODY MOLDING	NYLON, COLOR, BLACK
-1	DESCRIPTION	MATERIAL & FINISH

UNLESS OTHERWISE SPECIFIED DIMENSIONS ARE IN INCHES. TOLERANCES ON DECIMALS ±.008 ANGLES ±

MATERIAL _____

FINISH _____

CONTRACT NO _____

DR. *P. M. ... 9-4-80*

CHK. *...*

APPD. *...*

DSGN APPD. *...*

OTHER APPD. _____

AS SHOWN		561604-1
REMARKS		PART NO
AMP AMP INCORPORATED Harrisburg, Pa.		
NAME CA-3131 SHUT-OFF VALVE		
SIZE B	CODE IDENT NO 00779	DRAWING NO 561604
SCALE 1:1	SHEET 1 OF 1	

CUSTOMER DRAWING