

4

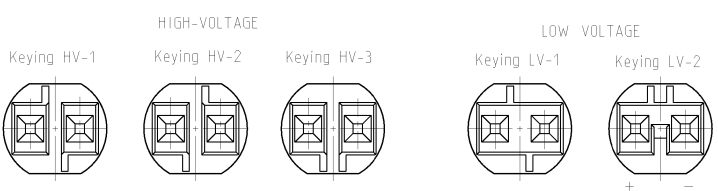
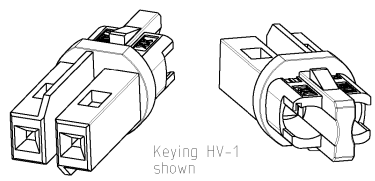
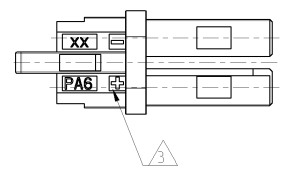
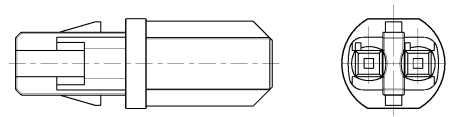
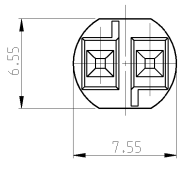
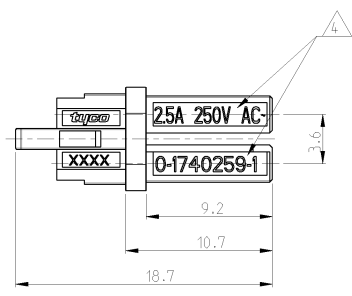
3

2

1

THIS DRAWING IS UNPUBLISHED. RELEASED FOR PUBLICATION 2008  
 (C) COPYRIGHT BY ALL RIGHTS RESERVED.

LOC	DISP	REV	REVISIONS	DATE	DNW	APFD
TF	LYR		BESCHRIFFUNG			
E1			REVISED PER ECO-11-005150	03MAY11	RK	HMR



Remarks:

1. cavities designed for MOS socket contact PN 1740336-x
  2. Counterpart is Outlet PN 1740262-x and corresponding products of the MiniHVL family
- ⚠ Polarity marking +/- permanent / usable for DC version
- ⚠ PN specific marking

LV-2	0-1740449-2	D	LOW-VOLTAGE 42V DC	7A/42V DC-	YELLOW
LV-1	0-1740449-1	D	LOW-VOLTAGE 42V AC	7A/42V AC-	LIGHT GREY
HV-3	0-1740259-6	D	HIGH-VOLTAGE 125 V AC	6A/125V AC-	BLUE
HV-2	0-1740259-5	E	Switch	max. 7A	RED
HV-1	0-1740259-2	D	HIGH-VOLTAGE 250V AC	2.5A/250V AC-	BLACK (ANTHRACITE)
HV-1	0-1740259-1	D	HIGH-VOLTAGE 250V AC	2.5A/250V AC-	NATURAL/WHITE
Keying	PN	Rev.	REMARKS	Marking ⚠	COLOR

DIMENSIONS: min 		DW: ELATZMANN 08FEB2005 CH: OENLOCH 08FEB2005 AP: BARTSCH 08FEB2005		<b>STE</b> TE Connectivity 7.5mm MiniHVL Connector System PLUG	
MATERIAL: PA 6		WEIGHT: 0.4 g		SIZE: A2 CASE CODE: 100779 DRAWING NO: 1740259	
FINISH:		CUSTOMER DRAWING		SCALE: 5:1 SHEET 1 OF 1 REV E1	



1740259