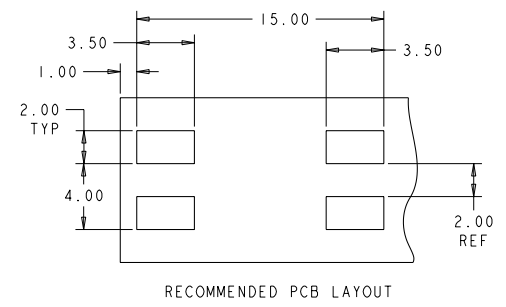


REV	DATE	BY	CHK	APPV
A7	11MAR2011	RK	HMD	
A8	03JUN2011	SK	DD	

- NOTES :
- MATERIALS AND FINISH:
 - HOUSING: LCP, COLOR: WHITE
 - CONTACTS: COPPER ALLOY, FINISH: TIN
 - MUST COMPLY WITH DIRECTIVE 2002/95/EC (ROHS)
 - THIS PRODUCT HAS NOT COMPLETED VALIDATION TESTING
 - WIRE TYPES AND SIZES ACCEPTED
 - 18, 20 AND 22 AWG SOLID WIRE
 - 18 AND 20 AWG PREBOND STRANDED WIRE
 - 18 AWG STRANDED WIRE (16 STRAND COUNT)
 - MAX INSULATION OD: 2.10 MM (.083")
 - STRIP LENGTH: 7.0±1.0 (.276")
 - MATERIAL AND FINISH:
 - HOUSING: LCP, COLOR: BLACK
 - CONTACTS: COPPER ALLOY, FINISH: TIN
 - PACKAGED IN TAPE AND REEL

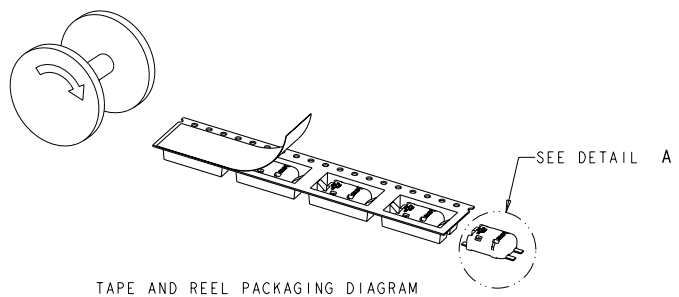


OBSELETE	PACKAGING	MATERIAL	COLOR	PART NO.
			WHITE	1954097-3
			BLACK	1-1954097-1
			WHITE	1954097-1

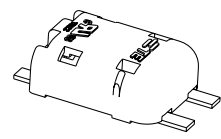
THIS DRAWING IS A CONTROLLED DOCUMENT.		DATE: 06JUN2006		TE Connectivity	
DRAWN BY: S. HORST		DATE: 06JUN2006		TE Connectivity	
CHECKED BY: J. R. ANGLI		DATE: 25OCT2007		TE Connectivity	
APPROVED BY: J. R. ANGLI		DATE: 108-2284		TE Connectivity	
PRODUCT SPEC: 114-13194		APPLICATION SPEC: 114-13194		TE Connectivity	
MATERIAL: SEE TABLE		WEIGHT: -		RESTRICTED TO: -	
FINISH: SEE TABLE		CUSTOMER DRAWING		SCALE: 7:1 SHEET 1 OF 2 REV A8	

THIS DRAWING IS UNPUBLISHED. RELEASED FOR PUBLICATION
 BY - ALL RIGHTS RESERVED.

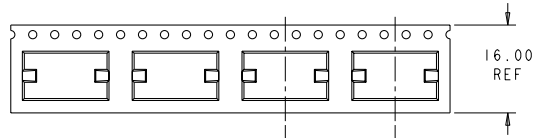
LOC	DISP	REVISIONS			
P	LYR	DESCRIPTION	DATE	BY	APPR
-	-	SEE SHEET 1	-	-	-



TAPE AND REEL PACKAGING DIAGRAM
 FOR 1954097-1 & 1-1954097-1



DETAIL A
 SCALE 5:1



SCALE 2:1

THIS DRAWING IS A CONTROLLED DOCUMENT.		OWN C DAILY	06JUN2006		TE Connectivity
DIMENSIONS: mm		CHK S HORST	06JUN2006		
TOLERANCES UNLESS OTHERWISE SPECIFIED:		APPD J R ANGL	25OCT2007	NAME POKE-IN LED CONNECTOR ASSEMBLY, 2 POSITION SMT	
0 PLC ±0.2		PRODUCT SPEC 108-2284		SIZE CASE CODE DRAWING NO	
1 PLC ±0.10		APPLICATION SPEC 114-13194		A200779 ©-1954097	
2 PLC ±0.15		WEIGHT		RESTRICTED TO	
3 PLC ±0.20		FINISH		SCALE 7:1 SHEET 2 OF 2 REV A8	
MATERIAL SEE TABLE		CUSTOMER DRAWING			